

# NEW YORK *Beef Producer*



**NEW YORK BEEF**  
PRODUCERS' ASSOCIATION

July / August 2022

Volume 38 - No.4

Official Publication of New York Beef Producers' Association  
and New York Junior Beef Producer's Association



PERMIT NO. 27  
EAST AURORA, NY  
**PAID**  
U.S. POSTAGE  
PRESORT STD

NYBPA  
10040 Hooker Hill Rd.  
Perrysburg, NY 14129

We are humankind  
*for cattlekind.*



It's our duty to help  
protect this sacred bond.  
This is what defines us.  
**BornOfTheBond.com**

All trademarks are the property of Zoetis Services LLC or a related company or a licensor  
unless otherwise noted. © 2021 Zoetis Services LLC. All rights reserved. GBF-00463

**zoetis**

## INSIDE THIS ISSUE

Directory Corrections.....	pg. 3
President Message/Herd Builder Sale.....	pg. 4
Beef Producers Bulletin.....	pg. 5
New Members/Meat Raffle.....	pg. 6
Beef Expo.....	pg. 9
BQA Info.....	pg. 10
Circling Disease in Cattle Article.....	pg. 12-13
Beef Farm of Excellence Award.....	pg. 14-16
News from NYBC.....	pg. 17
Equipment for Sale.....	pg. 26
Supreme Show Info.....	pg. 27
Junior Happenings.....	pg. 30-35
View from Tractor Seat.....	pg.26
Classified Ads.....	pg. 44

## UPCOMING EVENTS

### July

### August

Aug 30 - Beef Day @ NYS Fair  
Aug 30 - Supreme Show @ NYS Fair

### September

Sept 10 - Entry Deadline for Jr. Beef Expo Show  
Sept 24 - Beef Expo, Seneca Falls  
Sept 24 - Council Meeting @ Beef Expo  
Sept 25 - Jr Beef Expo Show

### October

Oct 29 - Council Meeting, R Lott & Sons Farm



For more events check out our web site -

[www.nybpa.org](http://www.nybpa.org)

Facebook -

[www.facebook.com/nybeefproducers](http://www.facebook.com/nybeefproducers)

### The NEW YORK BEEF PRODUCER

is published bimonthly by the

New York Beef Producers' Association.

January/February March/April May/June  
July/August Sept/October Nov/December

#### Advertising Rates

Full Page Color	\$225.00
Full Page (b/w)	\$125.00
1/2 Page (b/w)	\$85.00
1/4 Page (b/w)	\$55.00
Business Card (b/w)	\$25.00

Classified Ads free to paid NYBPA Members

5% discount for payment with copy

10% discount for 6 consecutive ads

5% discount NYBPA Member discount

8 1/2" x 11" Magazine format

**Deadline for next issue is AUGUST 1st.**

This will be firm so newsletter gets out on time.

For more information contact:

[nybeef@nybpa.org](mailto:nybeef@nybpa.org)

\*\*\*Visit our web site [www.nybpa.org](http://www.nybpa.org)\*\*\*

**KENT**

QUALITY YEAR-ROUND **MINERAL NUTRITION**

**FRAMEWORK 365 MINERAL**

Framework 365 Mineral<sup>1</sup> Performance ADE Availa 4  
Framework 365 Mineral<sup>1</sup> Performance MG  
Framework 365 Mineral<sup>1</sup> ADE Sure-Footed  
Framework 365 Mineral<sup>1</sup> Full Flush Availa 4  
Framework 365 Mineral<sup>1</sup> ET Elite ProPath 4  
Framework 365 Mineral<sup>1</sup> Grass-Fed Beef

**Built on Trust**  
EST. 1927

Bryan Beaver 609.760.9303 [bryan.beaver@kentww.com](mailto:bryan.beaver@kentww.com)  
Mackenzie Chauncey 518.369.0969 [mackenzie.chauncey@kentww.com](mailto:mackenzie.chauncey@kentww.com)  
Courtney Furst 315.436.0633 [courtney.furst@kentww.com](mailto:courtney.furst@kentww.com)

[kentfeeds.com](http://kentfeeds.com)

## EXECUTIVE COUNCIL

**President:**

Ted Card, Jamestown, 716-664-0356

**Vice President:**

Skip Lear, Albion, 585-730-9383

**Secretary:**

Sara Fessner, Bloomfield, 585-752-1213

**Treasurer:**

Brenda Dermody, Linwood, 585-233-0634

**Past President:**

Phil Trowbridge, Ghent, 518-369-6584

**Cornell Advisor:**

Ashley McFarland, Herkimer, 315-604-2156

**Executive Secretary:**

Amanda Dackowsky, Perrysburg, 716-432-9871

## REGIONAL DIRECTORS

**Region 1- Tyler Strub, Andy Beach, Alana Welker**

**Region 2- Ted Card, Amanda Dackowsky,  
Sherry Charlesworth**

**Region 3- Allison Thomas, Amanda Schwartz,  
Karen Clark**

**Region 4- Barb Benjamin, Jill Harmon**

**Region 5- Tim Pallokat, Clint Sampson, Donna Stone**

**Region 6- Ben Brooks, Brandon Riehlman,  
Glenn Forshee, Marissa Phelps**

**Region 7- Dean Wheeler, Andrew Juby,  
Mellissa Spence**

**Region 8/9- Craig Southworth, Joe Eisele,  
Betsy Hodge**

**Region 10- Sarah Hardy, Amanda Larrabee**

**Region 11- Dirk Schubert, Nanette LaTourette,  
JoAnne King**

**Region 12- Kevin Jablonski, Shawn Murphy,  
Erin Perkins**

**Region 13- Rich Blazeski, Ed Moran,  
Mackenzie Chauncey**

**Region 14- currently vacant**

## NY BEEF COUNCIL

**Executive Director:**

Jean O'Toole, Westmoreland, 315-796-7907

**NYBPA Representatives**

Jennifer Hammond, Bath, 607-346-5492

Peter Lehning, Honeoye Falls, 253-961-3743

## NY JUNIOR BEEF ASSOCIATION

President/NYBPA Rep- Daisy Trowbridge

Vice President- Makayla McLenithan

Secretary/Reporter- Patrick Stark

Treasurer- Samantha Basinait

Jr. Advisor - Sara Fessner

## NYBPA OFFICE

10040 Hooker Hill Road Perrysburg, NY 14129

Phone: 716-432-9871

Email: nybeef@nybpa.org

Web site: www.nybpa.org

## Allied Sponsors

### Platinum Level

Bush Hog Inc.

Merck Animal Health

Zoetis

### Gold Level

Farm Credit East

NY Simmental Association

### Silver Level

Finger Lakes Cattle Company

NY Beef Council

Thunder View Farms

Twin Clover Equipment

### Bronze Level

NYSAMP

Select Sires

Feedworks USA

Multimin USA

Williams Fence Supplies

## Additional Sponsors

### Photo Contest Sponsor

Kent Nutrition Group

### Supreme Beef Female Program

#### State Fair Supreme Show

Purina Animal Health

### County Supreme Duffel Bags & Vests

Hubner Seed

American Crop Insurance

**THANK YOU  
TO ALL OUR SPONSORS**



# 2021/2022 Directory Corrections

The following are corrections to the directory:

- Region 4 Co-Chairman (pg.7) – Janeen Sparks
- Lisa Sklener, D & L Farm (pg. 66) – farm description should read, “Registered and Commercial Charolais operation. Selling Bulls, Heifers, and Freezer Beef. Exit 61 off Route I-86. North on Route 34 approx. 8 miles. Turn right on Dean Creek Road. Farm 1.8 miles on right.”
- Addition to Genesee County (pg 34): Amy Mathisen, Mills Crest Acres  
5939 Griswold Rd. Byron, NY 14422 | 585-409-3000 | mathisenamy@gmail.com
- Correct address for: Dennis Phelps, Wayne E. Phelps Enterprises Inc. (pg.34)  
1862 Ledge Road Basom, NY 14013
- Junior Members (pg.11) - Autumn Mathisen
- Erwindale Farms Ad/TenEyck Family (pg. 84) - the correct ad is listed on Pg. 42 of this newsletter
- Charlesworth Family Farm ad (pg.74) – the correct ad is listed on Pg. 41 of this newsletter.

## COVER PHOTO

*Congratulations  
Amanda Schwartz!*



Amanda took the cover photo of this newsletter, the grand prize winning photo in the 8th Annual Photo Contest.

# NEW EMAIL!!

NYBPA has a new EMAIL address.  
Please update your records and use:

[nybeef@nybpa.org](mailto:nybeef@nybpa.org)



**NEW YORK BEEF**  
PRODUCERS' ASSOCIATION

# NYBPA President Message



For most of us our calving season has come to an end, and breeding season has started. Along with reproducing our herds we have crops to tend and hay to bale. Our day to day lives seem endless sometimes. Stress levels seem to rise with the rising costs to maintain our farms. Reaching out to another farmer, friend or family member can help us get through a tough day.

Take time to read this months publication. It contains information on the Beef Expo, Beef Farm of Excellence, and Junior's upcoming events. Thank you again to those of you who have given your time to NYSBP. As farmers, we are not of riches but of great wealth. We learn to treasure life even with its ups and downs.

Ted

## Herd Builder Sale Report

A good crowd gathered on a beautiful, hot, sunny May 7<sup>th</sup> Saturday to attend the NYBPA Herd Builder sale at Finger Lakes Livestock Exchange in Canandaigua.

The sale boasted a total of 22 lots consigned by Majin That Farm, Yankee Angus, Trowbridge Farms, and Johnson Angus Ranch, and grossed \$32,975. Four registered black Angus heifers averaged \$3,050, one registered black Angus cow sold for \$1,600, six commercial heifers averaged \$987.50, and eight commercial A.I. bred cows averaged \$1,142. There were also four embryo lots consigned, averaging \$318.

NYBPA would like to thank all those a part of this event for a successful sale including the consignors, the bidders, the buyers, auctioneer Scotty Crawford, DV Auctions, Finger Lakes Livestock Exchange, Trowbridge Farms for their help with sale advertising, and the NYBPA sale committee. If interested in consigning in the 2023 Herd Builder Sale, contact Skip Lear at 585-730-9383 or go to the NYBPA website- [www.nybpa.org](http://www.nybpa.org).



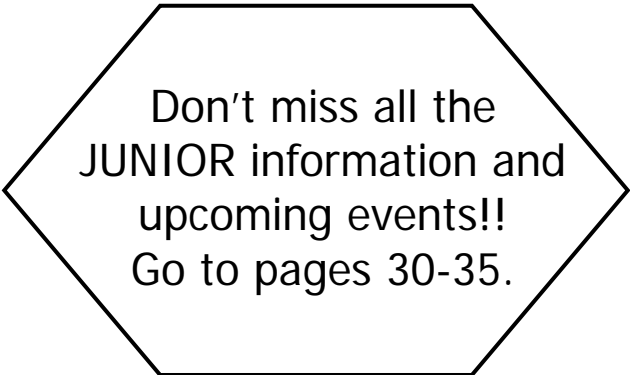
Lot 102 - sold for \$2,600

# The Beef Producers Bulletin

**Supreme Show Program** - check out info on page 27 including division sponsor information for the Supreme Show at state fair.

**BRAND NEW Award Program LAUNCHING** - there is a new award program that was recently formed called **BEEF FARM OF EXCELLENCE**. Check out the details of the award and the application on pages 14, 15, & 16. A fillable PDF application can also be found on the website at [www.nybpa.org](http://www.nybpa.org). Watch for the brand-new award program LOGO, coming soon!! For questions reach out to Amanda at [nybeef@nybpa.org](mailto:nybeef@nybpa.org).

**Equipment for sale** - NYBPA is selling some equipment that is no longer used and wants to offer these items to members first. Check out pictures, descriptions, and bidding details on page 26.



Don't miss all the  
JUNIOR information and  
upcoming events!!  
Go to pages 30-35.

## Next NYBPA Council Meeting

Saturday, Sept 24th  
following Beef Expo.  
R Lott and Sons Farms,  
Seneca Falls

## Having a consumer targeted event or activity?

NYBPA may be able to help with funding for your event. Funds can only be used for CONSUMER-focused activities. For events prior to September 30th, please reach out to Amanda Dackowsky, [nybeef@nybpa.org](mailto:nybeef@nybpa.org), ASAP. For events planned for October 1st, 2022 through September 30th, 2023, please contact Amanda before July 20th with details including event date, location, activities planned, and amount of funds being requested.

Ideas could include a farm tour or farm demonstration (for adults or school aged children) to help bridge the gap between producer and consumer. Burgers could be served, or spice packets handed out to attendees. Funds could be requested to help cover the costs of these projects. Email Amanda at [nybeef@nybpa.org](mailto:nybeef@nybpa.org).

# 2022 NEW MEMBERS Welcome!

- 1- Jared Martin | 4152 Yautzey Road Canandaigua, NY 14424 | 585-526-4741  
3 - Margaret & Edwin Moran | EM Livestock | 4362 Ferguson Corners Road Rushville, NY 14544 | 315-224-0148  
3 - Jennifer Morrisey | Morrisey Farms | 181 Stafford Road Palmyra, NY 14522 | 315-879-8302  
5 - Max DePuy | Misty Pine Acres | 2067 Erieville Road Erieville, NY 13061  
6 - Alan Griffith | Windy Ridge Farm | 207 Swan Hill Road Whitney Point, NY 13862 | 607-692-2526  
8 - Scott & Traci Laing | Laing Family Farm | 772 CR 35 Potsdam, NY 13676 | 315-261-2212

*\*a former junior member who has joined the adult association*

*~The number before name indicates which region new member joined*

## Referring New Members is Rewarded in our Membership Incentive Program

- 1 member - \$10 toward NYBPA merchandise or advertising.
- 2 members - \$20 toward NYBPA merchandise or advertising.
- 3 members - \$30 toward NYBPA merchandise or advertising.
- 4 members - \$40 toward NYBPA merchandise or advertising.
- 5 members - 2 registrations to NYBPA Annual Conference  
or \$60 in NYBPA merchandise or advertising.

*Each new member over 5- Adds \$10 in NYBPA merchandise, advertising or applied to  
Annual Conference Weekend Registration/Meals in January.*

**10 members- 1 free Hotel Night at the Annual Conference**  
*Mix and Match your awards after 10 new members.*

**2022 Member Rewards Program winners will be announced at the 2023 Annual Conference.**

# MEAT RAFFLE RESULTS ANNOUNCED

## CONGRATULATIONS to our 2022 Meat Raffle Winners!!

1st Place Winner

(received a freezer and 1/2 beef, ticket sold by Sam Basinait)

***Michael Maak of Medina, NY***

2nd Place winner

(received 1/4 beef, ticket sold by Jon Mason)

***Adam Grisewood of Silver Springs, NY***

3rd Place Winner

(received 1/4 beef, ticket sold by Nate Carbone)

***Nate Carbone of Gouverneur, NY***

Thank you to all who sold tickets, bought tickets, and helped in this fundraiser. NYBPA appreciates it!



# Northeast Elite Hereford Sale

**Saturday, September 10, 2022**  
**Noon**  
**Trowbridge Farms**  
**Ghent, NY**

**Sponsored By:**  
**New England Hereford Association**  
**New Jersey Hereford Association**  
**New York Hereford Breeders**

*Thank you to our Corporate Sponsors:*  
*Attica Veterinary Associates, PC*  
*Erie County Ag Society*  
*Genex*  
*Premier Select Sires*  
*Seedway*  
*SK Herefords*  
*ST Genetics*



**neelitesale@gmail.com**

**518-945-2638** John Wagner

**716-860-0842** Warren Bippert

*Buy With Confidence -*  
*Cattle DNA Tested and Parentage Verified*

*Watch for the Sale Catalog this Summer*

**LiveAuctions.TV**

# Maple Row Stock Farm

*Private Treaty Sale*

## *Ticketyboo 62J*



MAPLE ROW TICKETYBOO 62J  
(62J) P44304570

BEHM 100W CUDAS 504C  
(BEHMS04C) P43836754

NJW 735 M326 TRUST 100W ET  
(735100W) P43001897

BEHM R294 JASMAN102Y  
(BEHM102Y) P43229647

★ CRR ABOUT TIME 743  
(743) P42797564

METCH ABTIME REPLY Y116  
(Y116) P43288501

METCH DEACON RAVEL W911  
(W911) P43087950

- ★ AHA Registration #: P44304570. Calved 10/28/2021.
- ★ Great genotype and phenotype in one package - breed or show!
- ★ Maternal Grand sire CRR About Time 743 was Supreme Grandchampion in Denver. Sire BEHM 100W Cuda 504C is a Sire of Distinction and offers EPD profiles ranking in the top 5% of the breed for eight different traits and all their indexes.
- ★ Homozygous Polled, parent verified, DNA tested DLF, IEF, HYF, MSUDF, MDF.

Pam Armstrong

pam@maplerowfarm.com

716.479.6624





# BEEF EXPO WEEKEND

## Sept. 24-25th, 2022

### Saturday, Sept. 24th

Educational speakers for both adults and juniors and BQA chute-side training.  
Food truck lunch, trade show and other events all day!  
NYBPA Council Meeting in evening.

### Sunday, Sept. 25th

Jr Beef Expo Show! Check-in by 8:00AM. Show starts at 10:00AM.  
Showmanship, Pee-Wee Class, Steers and Heifers.

---

## Presentation Preview

Dr. Patrick Gunn, Purina - "Maximizing Your Forage Base"

Hubbard Feeds - mineral supplements/tubs

NY Beef Council - Beef Checkoff and remitting for direct market producers

Attica Veterinary Associates - Animal Handling

Other topics including forage analysis and mineral programs, farm finances  
and farm taxes, and DOT ag law information

BQA Chute-side training opportunity

Junior topics will focus on Showmanship and Judging

**Junior  
Show included  
this year!**

**\*Please RSVP by Sept. 17th\***

Amanda Dackowsky  
716-432-9871  
nybeef@nybpa.org

ALL ARE WELCOME!

**R Lott &  
Sons Farms**  
2973 State Route 414  
Seneca Falls, NY 13148

# BQA INFO

Preconditioning of feeder cattle is a great way to prepare them for movement to the next production level. It is an important BQA principle, but foremost an animal welfare issue. Cattle that are sold as “weaned on the truck” at greater risk of getting sick. Cattle that get sick require antibiotics, which the beef industry is trying to reduce relative to expense, resistance, and consumer perception.

It has been well documented that cattle that get sick do not perform well in the finishing phase and have reduced carcass quality. On average around 2-4% of cattle die post weaning. This could be cut drastically if these cattle had been properly prepared for the next phase off the cow.

Preconditioning consists of three management practices that work together to reduce stress thereby increasing the immune status of the young calf.

## **Vaccination/health management.**

Vaccines assist the calf in fighting diseases that are for the most part resident in the animal itself – though many of them are contagious and can be spread between animals. Building immunity begins with assuring the calf gets colostrum from a well vaccinated dam. Cows that are not vaccinated will not have the same level of immunoglobulins as vaccinated cows. At a minimum cows should be vaccinated for IBR, PI3, BVD, BRSV and Leptospirosis. At a minimum calves should be vaccinated for:

1. IBR, PI3, BVD, and BRSV
2. Mannheimia haemolytica
3. Pasteurella multocida
4. 7-Way Clostridium



Additional vaccines to consider would be:

1. Histophilus somnus
2. Lepto 5
3. Internal & external parasite control. Calves that are burdened by parasites have a reduced immune system.

Work with your veterinarian to develop a plan for your operation.

To assure the most effective immune response calves should be boosted (if required) at least 30 days prior to movement. If killed vaccines are used, they require a booster. If not boosted, then they are worthless.

**Weaning.** Separation from the dam is a high stress event. Therefore if the immune system is not prepared as described above, disease causing viruses and bacteria have a much easier time overcoming animal health. Low stress weaning practices such as fence line weaning have shown some success in reducing stress.

**Nutrition.** Calves that have had only mom’s milk, grass and water out of a pond are further stressed when they are expected to eat stored forage, grain and drink water from a tub. Ideally transitioning calves to their new diet occurs prior to weaning.

Preconditioning is not only good for the calf and good for the pocket, it is the right thing to do. As BQA producers, this practice should be as commonplace as checking fence and feeding your cows.



**YOUR INVITED TO...**

# THE *Red Revival* II

**Sunday, August 14th, 2022 | 10:30 AM - 3:00 PM**

Sponsored by the New York Red Angus Association  
Hosted by Finger Lakes Cattle Company

Featuring keynote speakers from Black Belt Cattle Marketing Team: Dr. Lisa Kriese Anderson, Mr. Jeremy May, and Ms. Jessie Tucker

Participants are encouraged to Pre Register and RSVP to John Kriese at [hereford@frontiernet.net](mailto:hereford@frontiernet.net) by August 1<sup>st</sup>.

***We will also be discussing:***

**"Power of Red" Bull and Female Sale  
to be held April 23, 2023**

**"Power of Red" Bull and Heifer  
Development Program for Red Angus  
and Hereford Genetics**



**JOHN & ANITA KRIESE**  
(315) 856-0234

**SCOTT HARTMANN**  
(315) 945-6820

**TIM DENNIS**  
(315) 856-0183

**CHRIS BOYCE**  
(716) 818-5464

# Circling Disease in Cattle

*By: Dr. Melanie Hemenway, NYSCHAP*

Listeriosis is a sporadic bacterial infection by *Listeria monocytogenes* that may affect a wide range of animals including man. The disease occurs in three different forms - an infection of the brain (encephalitis), an infection of the pregnant uterus (abortion) or an infection of all tissues of the body (septicemia) which is typically seen in young animals. Encephalitis or infection of the brainstem in adult ruminants is the most frequently recognized form.

Initially, affected animals are off feed, depressed and disoriented. They may push their heads into walls, lean against objects, or circle thus the common name "Circling Disease". There may be facial paralysis with a drooping ear, deviated muzzle, flaccid lip, and almost continuous salivation. Terminally affected animals fall and are unable to rise, lie on the same side and may have involuntary running movements of their limbs.

Because *L. monocytogenes* is found in the soil and in the intestinal tracts of asymptomatic animals, infections may recur on the same premises in successive years. Infected animals can shed *L. monocytogenes* in the feces, milk, and uterine discharges. It is also found in aborted fetuses and occasionally in the nasal discharges and urine of symptomatic animals. Soil or fecal contamination results in

its presence on plants and in silage. Many outbreaks are associated with the feeding of poorly fermented silage. The less acidic pH of spoiled silage enhances multiplication of the *L. monocytogenes* bacteria that may have been picked up from the soil when harvesting crops. Outbreaks may occur around 10 days after feeding poor-quality silage. Removal or change of silage in the ration often stops the spread of listeriosis; feeding the same silage months later may result in new cases.



When the bacteria are ingested, it tends to localize in the intestinal wall and results in a high level of inapparent infections with only a small percentage

# Circling Disease in Cattle, cont.

of animals becoming clinically ill. Diagnosis is typically made from clinical signs. Testing is recommended to rule out Rabies.

Infected animals should be isolated from other animals and will require a high dose of antibiotics for up to six weeks or more. High doses are required because of the difficulty in achieving minimum bactericidal concentrations in the brain. Recovery depends on

early, aggressive antibiotic treatment. If signs of encephalitis are severe, death usually occurs despite treatment.

The risk of listeriosis can be lowered by feeding good quality silage with a low pH. Avoid spoiled or moldy silage and silage from the top layer (few inches) which has been exposed to air. Any leftover silage should be removed from the feedbunk after feeding.

PRESENTED BY YOUR ARROWQUIP DEALER, WILLIAMS FENCE CNY

## PORTABLE CHUTE, ALLEY, & TUB LIVE DEMONSTRATIONS

Live demonstrations by appt. only.  
Contact Julie Wratten at 315-841-4910



**October 24, 2020 | 9:30am-1pm**

@ Hoskings Sales Barn 6096 State Route 8, New Berlin, NY 13411

**Nov 7, 2020 | 10am-12pm**

@ Sunnybrook Farm, 2115 Brothertown Road, Deansboro, NY 13328



# Beef Farm of Excellence Award Application

**Deadline:** August 31<sup>st</sup> of the current year

Please submit completed application and all supporting documents to:  
**NYBPA, 10040 Hooker Hill Rd. Perrysburg, NY 14129**

Requirements and rules for award:

- Must be a current, paid NYBPA member.
- Must be BQA certified, in good standing (Level I or Level II).
- Appearance of animals, farm, farmyard, equipment, etc will all be factored into the scoring.
- Please see the NY Beef Farm of Excellence Score Card for detailed points breakdown.
- Visual judging of the farm will take place in September and October of the current year.

What do you get with the award?

- Awards will be presented at the NYBPA Annual Conference in January in Syracuse.
- Award winners will receive a display SIGN for their farm as well as recognition/advertisement in NYBPA publications and website. **All signs will be awarded annually at the NYBPA Annual Conference.**

## AWARD APPLICATION

Applicant Name(s) \_\_\_\_\_

Farm Name \_\_\_\_\_ Herd Size \_\_\_\_\_

Address \_\_\_\_\_

Phone \_\_\_\_\_ Email \_\_\_\_\_

Operation Type      Cow/Calf      Backgrounder      Feedlot      Seedstock

Finisher      Other \_\_\_\_\_

***Please write (legibly) or type all answers using a separate sheet of paper if needed. Be sure to submit this form, all answers, and all supporting documentation when applying for the award.***

1. Briefly describe your farm (ie. History, years in operation, etc).

*\*this will not be used in the scoring process*

2. Explain your vaccination protocol for your herd including vaccine types, when administered, and what age/stage of production the animals are when given the vaccine.



This space left open to answer Q2.

2a. Please submit your documented vaccination protocol or Standard Operating Procedure (SOP).

I hereby sign that the written vaccination protocol is correct and accurately demonstrates what occurs on my farm.

\_\_\_\_\_  
Signature of Producer

\_\_\_\_\_  
Signature of Your Veterinarian

3. Explain your record keeping method(s) for your herd.

3a. As an example, provide a copy of one of your records, demonstrating your record keeping method.

**For Additional Possible Points**

4. If you are Agricultural Environmental Management (AEM) Tiers 1 or 2, please provide certificate.

5. If you are NYSCHAP certified, please provide documentation.

6. If you have completed your Masters of Beef Advocacy (MBA), please provide a copy of your course certificate.

# NY Beef Farm of Excellence Score Card

## 200 Points Total – must get 90% (180 points)

### A. Physical/Visual Farm Judging – 60 points

#### Buildings, Grounds and Surroundings

**30 Points Max**

- 10 points** - Building condition, clean and attractively finished – farmstead should be visually welcoming, buildings maintained appropriately, free of visible damage and deterioration (eg broken windows, missing siding, roof damage, etc)
- 10 points** - Landscaping – should be neat and appropriate, extent of landscaping should not be weighed heavily
- 5 points** - Ditches, fences, roads and lanes – neat and free of debris and excessive weeds, well graded and have neat and uniform appearance, good repair and free of debris (eg fence line free of plastic caught on it)
- 5 points** - Machinery – stored or parked in an orderly manner

#### Farm Operations

**30 Points Max**

- 10 points** - Animals – all livestock visible from public roads should represent a live, healthy & clean appearance
- 8 points** - Barnyard – livestock areas should be neat and free of manure piles and unsightly conditions
- 6 points** - Manure Handling & Cleanliness of Roads – manure storage facility and equipment should be neat, tracking of mud and manure from handling should be minimal
- 3 points** - Feed Storage Areas – feed areas should be free from plastic, garbage and other unsightly debris, maintained in a neat and orderly way
- 3 points** - Unnecessary Items – the property should be free of debris and garbage, obviously deteriorated machinery and other unnecessary items

### B. Farm Practices - 140 points possible (listed below)

- 50 points - Must have at least BQA Level I Certified
- 30 more points - BQA Level II Certified
- 30 points - Vaccination Protocol in place – documentation?
- 30 points - Record Keeping – how they keep records

### C. Additional Points Awarded

- 20 points AEM Tiers 1 and 2 – SWCD can provide a certificate to farm
- 20 points NYSCHAP – state vet can provide confirmation to farm
- 20 points MBA – the farmer can print out their certificate

# JULY/AUGUST 2022

## YOUR BEEF CHECKOFF

*Investing in Beef Safety, Nutrition and Promotion.*



Funded by Beef Farmers & Ranchers

### NY Beef Checkoff produces Cash Cow Video Series

*"Cash Cow Videos offer restaurant tips for maximum utilization of beef on their menu"*

**Rome, NY (May 2022)** – The New York Beef Council recently produced a series of beef fabrication videos called the “Cash Cow” series which features Mark Elia of Elia’s Meat Market in Highland, NY and former CIA-Hyde Park Chef Instructor. The videos were developed to be educational and offer insights on ways to optimize the profitability of having beef on restaurant menus. Suggestions for Chefs on getting the most out of your beef menu items are also offered during the video.

The first of four informative videos which coined the series “Cash Cow” highlights the **Top Sirloin Butt**. Chef Mark Elia instructs during this hands-on video teaching chefs and butchers how the Top Sirloin Butt will “produce the most gross revenue of any other cut of beef”. Chef Elia goes on to break down the Top Sirloin Butt into several different variations aimed at maximizing the profit with this undervalued cut of beef.

The second video in the series focuses on the boneless **Ribeye Sub-primal**. Chef Elia offers several different options during this video highlighting the versatility of the boneless ribeye to enhance a restaurants specials menu.

The third video of the series works to educate about the **strip loin sub-primal** and options to utilize it in different ways rather than just strip steaks. The fourth video of the series concentrates on the **Tenderloin** and how you can cut more whole filet cuts utilizing “meat glue.”

All four videos are featured on the New York State Restaurant Associations' website where they are offered as free educational material to the foodservice industry. Check out all the videos on the updated New York Beef Council Foodservice page <https://www.nybeef.org/resources/foodservice> or by using the QR code on the right.



The New York Beef Council aims to be the educational arm of the beef industry connecting foodservice professionals with the most up-to-date techniques and tips for maximum utilization of beef on their menu.

### NY Beef Checkoff Hosts Meat Grinding Event

*"Influencers Learn to Grind their Own Burgers!"*

**Canandaigua, NY (April 2022)** - On April 1st, 2022, the New York Beef Council (NYBC), funded by the Beef Checkoff and in partnership with the Iowa Beef Council, hosted six social influencers for a Meat Grinding 101 event at NY Kitchen in Canandaigua, NY. Chef Patrick Rae, chef instructor at the Fingers Lake Community College in Canandaigua, lead the group in this hands-on grinding event. Participants were given instruction and feedback from Chef Patrick as they explored options for how to grind chuck, brisket, and short ribs together for the ideal beef blend for burgers. Influencers also learned how to grind beef sausage and utilize the seven different flavor sausage seasoning mixes found on Beef. It's What's for Dinner.

The NYBC's goal is to serve as the premier source of beef information to the influencers in our region. Events such as this allow the Beef Checkoff to engage directly with influencers and bloggers to highlight beef's versatility, quality, and taste. One attendee reflected upon the event by saying, “This experience expanded my knowledge on beef and raising cattle. I knew very little beforehand. I honestly never gave much thought to where the beef is coming from, and it was reassuring to learn that a majority of beef consumed in the U.S. comes from the U.S. While I have always been somewhat educated on the nutritional benefits of beef (and have never thought of it as unhealthy in and of itself), the educational materials gave me useful language and reminded me of certain nutritional facts that will be useful for me when discussing beef with my peers”.

Make sure to follow NYBC on Facebook and Instagram where the content created from this fun event will be highlighted. This educational event was made possible through the NYBC's continued partnership with the Iowa Beef Council. The NYBC funded by the Beef Checkoff, is responsible for education outreach and promotion efforts on behalf of beef and dairy farmers.

### New York Beef Corp's Graduates of 2022

Throughout March the New York Beef Checkoff (NYBC) hosted a weekly virtual training that educated participants in developing their knowledge and confidence in reputation management for the beef industry. Beef Farmers and industry representatives who were interested in gaining new skills and confidence in promoting beef participated in this weekly series during March.

We are proud to announce this year's graduating class! Use the QR code on the right to view our 25 beef producers who participated in our advocacy training.



### Best New York Burger Named!!

*"And the winner is....."*

The Ale `n Angus Pub's "Holy Smokers Burger"

Check out the announcement by using the QR code on the left



# Stabilize Rumen pH, Improve Rumen Function

## LactiproNXT® and LactiproFLX® Uses

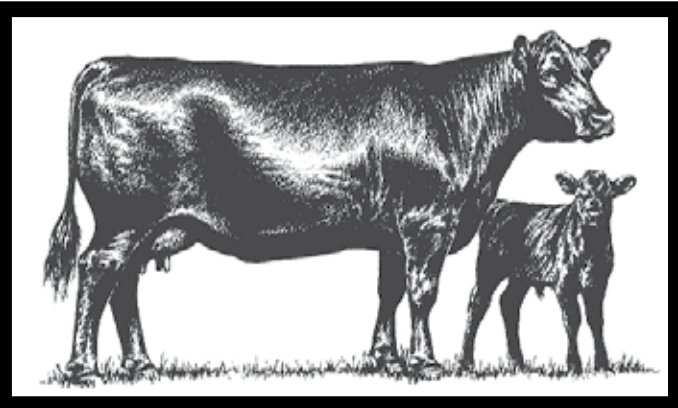
- ✓ Shorten the step up to finishing diet
- ✓ Terminal processing
- ✓ Hospital use
- ✓ Receiving cattle
- ✓ Cull cow feeding
- ✓ Crop residue grazing



877-907-5315 · msbiotec.com

# *HAUMAN ANGUS*

## Registered Black Angus Cattle for sale



- Mature "AI" bred yearling bulls
- Cow, calves, & heifers
- Over 40 years of performance "AI" breeding
- NYSCHAP Certified closed herd
- Johne's free test zero, Level 6 + (Highest Level)
- Leukosis Free
- BQA Level 2

***Proud Recipient of the 2019 Master Breeder Award  
Presented by the New York Angus Association***

***Breeder of 2015***

***Midland Bull Test Award Winner***

***"HAF CHISUM A394"***

***#1 ADG - Group 1***

***#1 Top Indexing Angus Bull***

***#4 High Indexing Efficiency Ratio***

**Dewey & Mary Hauman**  
594 Lovejoy Road, Penn Yan, NY 14527  
315-536-8154  
dhauman@aol.com



# NY AG & MARKETS NEWS

## Free 840 RFID Tags

**FREE**

New York State Department of Agriculture and Markets has removed the limit for orders of 840 RFID tags. The new order forms are available on their website, either scan the QR code supplied here or visit [https://agriculture.ny.gov/system/files/documents/2022/01/ai-489\\_order\\_form\\_producer\\_ear\\_tags.pdf](https://agriculture.ny.gov/system/files/documents/2022/01/ai-489_order_form_producer_ear_tags.pdf). Once your order form is filled out, you can either email it to [daisupplies@agriculture.ny.gov](mailto:daisupplies@agriculture.ny.gov), fax it to 518-485-7773, or mail it to the address on the bottom of the form.

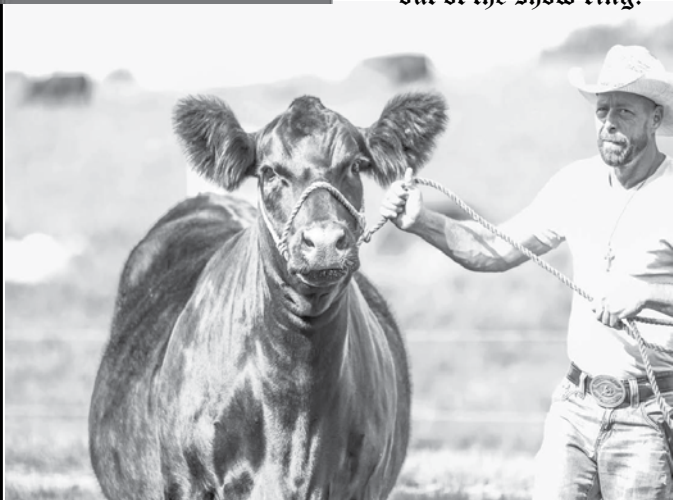
Don't miss out!



**FREE**

**Simme Valley**

Producing Stylish  
Predictable  
Simmental Cattle  
that perform in and  
out of the show ring.



**Simme Valley Fre-Anna**  
Supreme Winner at

Jersey Fresh – Allegany Fair – Erie County Fair  
Tioga County Fair – NY All Breeds Supreme Show  
NYSF Simmental Show, and Gr Champ at Big E

Jeanne White 607-423-4888 [Jeanne@SimmeValley.com](mailto:Jeanne@SimmeValley.com)  
Phil Paradis 607-280-4299 [www.SimmeValley.com](http://www.SimmeValley.com)

## NYBPA Member Brag Board



John and Anita Kriese accepting the plaque for the high indexing Red Angus bull at the Pennsylvania Bull Performance Test Sale held in March. The bull was consigned by Finger Lakes Cattle Company and the third consecutive year FLCC has received this recognition.

Tim Dennis accepting the plaque for high indexing Hereford bull at the Pennsylvania Bull Performance Test Sale. The bull was consigned by Glade Haven Herefords, the second consecutive year they have earned this honor.



Congratulations Finger Lakes Cattle Company & Glade Haven Herefords!

**SAVE  
THE  
DATES**

**TROWBRIDGE FARMS**

**SELLING DAUGHTER** of  
Frosty Elba Lizzy 564 (top),  
Sired by WOODHILL Blueprint.  
Full sister Trowbridge Elba 154  
shown (bottom)



**FEMALE**  
**PRODUCTION**  
**SALE**

**A FAMILY AFFAIR**

**SEPT. 17, 2022 • 11AM**

**TROWBRIDGE FARMS • GHENT, NY**

**Northeast  
Elite**  
**HEREFORD SALE**

Sale hosted by:  
Trowbridge Farms

**Saturday, September 10, 2022**  
**12:00 Noon • Ghent, NY**

**SALE SPONSORED BY:**  
New England Hereford Association  
New Jersey Hereford Association  
New York Hereford Breeders



**SELLING DAUGHTER** of  
JKW 719T 1406 MISSY 1602 (above),  
Sired by Boyd Power Surge



# BIG APPLE CATTLE CO.

**AUGUST 26-28, 2022**  
**BIDS DUE SUNDAY AT NOON**

*Private Treaty Sale*

MAINE ANJOU, SIMMENTAL, & CROSSBRED CALVES



*2022 Girls Include*

GETCHA SOME, 10AK, FULLY LOADED, LOADED UP,  
MATERNAL MADE, RESOURCE, HERE I AM,  
FU MAN CHU, INSIGHT, DATABANK, DRIVIN 80,  
GARTH & X2



FOLLOW US ON INSTAGRAM AND  
FACEBOOK FOR UPDATES.

**BIG APPLE CATTLE CO.**  
15133 S. QUAKER RD  
GOWANDA NY 14070

**ERIC, BAILEY, & JJ BOND**  
(716) 640-1375

**CHAD, AIMEE, EVERETT,  
THATCHER & MYER GERNATT**  
(716) 572-2618



*Irish Rose Donor*



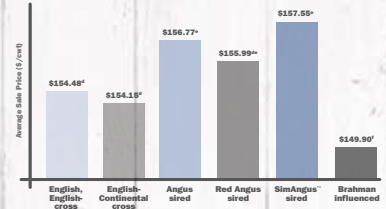
*Ms. Glimmer Donor*





# MORE PER HEAD PERIOD

EFFECT OF SIRE BREED ON SALE PRICE OF BEEF STEER CALVES  
Superior Livestock Auction, Summer 2020<sup>a</sup>



SimAngus™-sired steer calves sold through Superior Livestock Auction in summer 2020 earned **more at sale time** than all other calves<sup>b</sup>

It's no wonder the percentage of SimAngus™ calves marketed through the industry's largest video auction has grown **eightfold** since 2010.

Want low-risk, high-potential calves with earning potential?

## STAND STRONG SIMMENTAL

406-587-4531 • simmental.org

<sup>a</sup> For lots of 50 head or more. <sup>b</sup> Kansas State University, December 2020, Superior Livestock Auction data analysis of 3,280 lots, 394,900 head of beef calves marketed during summer 2020. (P<.0001)  
<sup>c</sup> Lots that qualified for breed-related programs were excluded from the model due to potential confounding effects with sire breed analysis and, for many, few lots in the data.  
<sup>d, e, f</sup> Means without a common superscript differ (P<0.05). Lots of calves in breed-identified groups were sired by bulls from the respective breeds and out of dams with no Brahman influence.

# New York Simmental Association

[NYSA@NewYorkSimmental.com](mailto:NYSA@NewYorkSimmental.com) [www.NewYorkSimmental.com](http://www.NewYorkSimmental.com)

### OFFICERS:

- President: Darryl Bunal, Rome – 315-338-9033
- Vice-Pres: Jeremy Bear, Greenville - 518-929-0677
- Secretary: Jeanne White, Groton – 607-423-4888
- Treasurer: Shawn Murphy, Eagle Bridge – 518-686-4180

### Upcoming Calendar of Events:

July 30 - NYSA Picnic/Meeting, Tuckaway Farm, Bryan & Sarah Stocks, Bring a dish to pass.





# THIS IS A TESTIMONIAL:



We could go on and on about Wind and Rain<sup>®</sup> mineral. How it provides the essential minerals cattle need in a convenient, weather-resistant granular form. But these cows say it all. Rely on this proven solution available through the Purina<sup>®</sup> All Seasons<sup>™</sup> Cattle Nutrition Program.

We can tell you more than this ad ever could.  
**Or visit [ProofPays.com](http://ProofPays.com)**



FEED GREATNESS<sup>®</sup>



**Trinity Meat Company**  
IS NOW AN  
**Organically Certified  
Processor**



**Trinity Meat Company is a USDA Processor and now  
Organically Certified by NOFA-NY**

**Trinity Meat Company is also a  
USDA Approved Smokehouse**

**Beef | Hogs | Lamb | Goat  
No Premium Processing Charges for Organic Processing**

**Call Tonya for Slots: (607) 293-7927**  
**trinitymeatoffice@gmail.com | www.trinitymeatcompany.com**

**Trinity Meat Company is located at  
3487 State Highway 205 Hartwick, NY 13348**



**\*Come compete for the Beef Chair to get your ticket into the NYS Fair\***

*(One of the last chances before the State Fair!!!)*

Go to the Tioga County Fair NY website, click on Entry Forms and you will find the classes being offered!

For any questions, contact Bridget Meade (Cattle Superintendent) at

[bridgetmeade40@gmail.com](mailto:bridgetmeade40@gmail.com)

Location: 1 W. Main Street, Owego NY 13827

Right off I86, Exit 65

## **Your Natural Source for Feed Additives**



**SPECIAL BENEFITS FOR NATURALLY GROWN BEEF**

**vistapre<sup>+</sup>**

**agolin<sup>®</sup>**



**JOHN M. CLARK, P.A.S. (315) 868-5646**



# Special NYBPA Member Offer!

On April 7th at the Zoom council meeting, it was decided that some equipment that NYBPA has will be sold. NYBPA members will have first opportunity to place bids on these items before being publicly placed for sale. Everything is sold as is.

**Please submit sealed bids by Saturday, Sept 24th, 2022 to**

Amanda Dackowsky  
nybeef@nybpa.org  
10040 Hooker Hill Road  
Perrysburg, NY 14129  
or in person at Beef Expo

**\*Items can be viewed in person at Beef Expo, Sat. Sept 24th**

**\* Everything is SOLD AS IS**

For more pictures or details on the equipment, please contact Amanda Dackowsky at 716-432-9871 or nybeef@nybpa.org or Skip Lear at 585-730-9383.



**Item #1-** For-Most feeder cattle chute, on trailer WITH scale. Too small for full grown cattle.



**Item #2 -** Cooking trailer with hitch; used for BBQ beef sandwiches at EFD



**Item # 3, 4, & 5 -** Hobart commercial meat slicers; 3 slicers, 110 volt, sold individually



# 2022 SUPREME SHOW PROGRAM

The 13<sup>th</sup> Supreme Beef Female Program is underway! The program is open to all county fairs and beef shows in New York State. There are two new changes to the program. This year instead of chairs, winning recipients will get a duffel bag and a vest, printed with the sponsor's logo. The duffel bag will be handed out at the respective shows and the vests will be custom-sized and handed out at the Supreme Show at State Fair or around that time.

## Also, please note this rule change going into effect for this year's program.

- At the time of winning a Supreme Show Chair or honor at a show or fair, if the winning exhibitor is NOT an NYBPA member, they will need to become a member as well as pay a \$50 entry fee in order to show and participate in the NYS Fair Supreme Show. (Only applies to adult memberships).



The county fairs and shows that are currently participating in the Supreme Show Program are (in alphabetical order) *Allegany County Fair, Altamont/Albany County Fair, Boonville/Oneida County Fair, Broome County Fair, Cattaraugus County Fair, Chautauqua Beef Classic, Chautauqua County Fair, Chemung County Fair, Chenango County Fair, Clinton County Fair, Columbia County Fair, Cooperstown Junior Livestock Show, Cortland County Fair, Delaware County Fair, Dutchess County Fair, Eastern NY Spring Classic, Empire State Beef Classic, Erie County Fair, Essex County Fair, Fonda Fair, Franklin County Fair, Genesee County Fair, Greene County Fair, Hemlock/Livingston County Fair, Herkimer County Fair, Lewis County Fair, Madison County Fair, Niagara County Fair, NY Cattle Battle Spring Jackpot Show, NY Cattle Battle Spring Youth Show, NYJBPA Preview Show and Jr. Beef Expo Show, Ontario County Fair, Ontario Female Cash Showdown Jackpot Cow/Calf Show, Ontario Female Cash Showdown Jackpot Heifer Show, Oswego County Fair, Otsego County Fair, Saratoga County Fair, Schoharie County/Cobleskill Fair, Seneca County Fair, St. Lawrence County Fair, Steuben County Fair, Tioga County Fair, Ulster County Fair, Washington County Fair, Wayne County Fair, Wyoming County Fair.*

Official, complete rules can be found on the website at [www.nybpa.org](http://www.nybpa.org). If you would like to be a part of this program, the beef show superintendent or county fair CCE educator will need to request a bag/vest to be a part of the program (this is not done automatically). To get on the program list, email [nybeef@nybpa.org](mailto:nybeef@nybpa.org) or call 716-432-9871. The overall Supreme Show will take place at the NYS Fair on BEEF DAY, Tuesday, August 30<sup>th</sup>.

## Division Sponsors WANTED!

Are you interested in sponsoring a class division for the Supreme Show at the NY State Fair Tuesday, August 30<sup>th</sup>? If so, please contact Amanda Dackowsky at [nybeef@nybpa.org](mailto:nybeef@nybpa.org). Division sponsors will be announced during the show as well as advertised in the after-show reports and articles. This is good publicity for your farm or business and helps make the Supreme Show a success! Class divisions are limited. Contact Amanda today!

Thank you to HUBNER SEED and AMERICAN CROP INSURANCE for sponsoring the duffel bags and vests for the Supreme Beef Female Program! Thank you to PURINA for sponsoring the Supreme Beef Female Show!!



# 2022 NYS FAIR SCHEDULE

## FIRST ROTATION – Judge: Sheila Jensen, Jensen Bros., KS

Tuesday, August 23 4:00 pm – 9:00 pm

### ARRIVAL OF FIRST ROTATION

Wednesday, August 24

9:00 am  
10:00 am  
12:00 pm  
2:00 pm

### Deadline to Check In Office with Registration Papers

Youth Showmanship  
Hay Bale Throwing Contest  
Jr. Hereford Show

Thursday, August 25

10:00 am  
1:00 pm

Shorthorn Open Show-Followed by  
Shorthorn Plus Open Show  
Red Angus Open Show

Friday, August 26

10:00 am  
1:00 pm  
6:00 pm

Charolais Open Show  
Hereford Open Show  
Exhibitor Pot Luck Dinner

Saturday, August 27

8:30 am  
12:00 pm  
1:00 pm

4-H Youth Breed Show/Showmanship  
**Release of First Rotation Cattle & Campers**  
Barn Closed for Cleaning

## SECOND ROTATION – Andy Musgrave, Musgrave Angus, IL

Saturday, August 27 5:00 pm – 10:00 pm

### ARRIVAL OF SECOND ROTATION

Sunday, August 28

9:00 am  
10:00 am  
12:00 pm  
6:00 pm

### Deadline to Check In Office with Registration Papers

Jr. Highland Show  
Jr. Angus Show  
Exhibitor Pot Luck Dinner

Monday, August 29

10:00 am

Angus Open Show

Tuesday, August 30  
**BEEF DAY**

10:00 am  
1:00 pm  
3:00 pm

Highland Open Show  
Hay Bale Throwing Contest  
NYS Supreme Female Show

Wednesday, August 31

9:00 am  
4:00 pm  
5:00 pm

4-H Youth Breed Show/Showmanship  
**Release of Second Rotation Cattle & Campers**  
Barn Closed for Cleaning

## THIRD ROTATION – Jake Scott, Krebs Ranch, NE

Thursday, September 1 4:00 pm – 9:00 pm

### ARRIVAL OF THIRD ROTATION

Friday, September 2

9:00 am  
12:00 pm  
2:00 pm

### Deadline to Check In Office with Registration Papers

Hay Bale Throwing Contest  
Youth Showmanship

Saturday, September 3

10:00 am  
1:00 pm

Belted Galloway Open Show  
American British White Park Open Show

Sunday, September 4

10:00 am  
12:00 pm  
6:00 pm

All Other Breeds Open Show  
Simmental Open Show-Followed by Sim/Angus-  
Sim/Solution Show  
Exhibitor Pot Luck Dinner

Monday, September 5

9:00 am  
3:00 pm

4H Youth Breed Show/Showmanship  
**Release of Third Rotation Cattle and Campers**



# NEW YORK STATE FAIR

## *Roll of Victory* ANGUS SHOW 2022

**OPEN SHOW MONDAY, AUGUST 29, 2022**

**JUDGE: ANDY MUSGRAVE**

**JUNIOR SHOW SUNDAY, AUGUST 28, 2022**

**JUDGE: MEGAN PELAN**

**ENTRIES: [WWW.NYSFAIR.NY.GOV](http://WWW.NYSFAIR.NY.GOV).**

**DEADLINE: AUGUST 5, 2022**

**ANGUS BREED REPRESENTATIVE:**

Chad Hazekamp

Cell: 315-941-0817

Email: [cindy.bell70@yahoo.com](mailto:cindy.bell70@yahoo.com)

**CATTLE ARRIVAL: SATURDAY, AUGUST 27<sup>TH</sup> AFTER 5:00 PM  
TILL SUNDAY, AUGUST 28<sup>TH</sup> 9:00 AM.**

**CATTLE DEPARTURE: WEDNESDAY, AUGUST 31<sup>ST</sup> AFTER 3:00 PM.**



*photo by Meaganish Marketing & Photography*

# 2022 JUNIOR SPRING PREVIEW

Despite a colder start to the weekend, NY Junior Beef Producers had a great turn out and show at the 2022 NYJBPA Spring Preview Show. Approximately 90 youth exhibited over 150 head of commercial and registered cattle in Batavia at the Genesee County Fairgrounds on April 22<sup>nd</sup> through the 24<sup>th</sup>. The show was judged by Bill Dunn from Cochran, PA. Showmanship classes were on Saturday and Sunday was the heifer and steer show. Official show photographer was Megan Andersen of Rock Valley Livestock Photography & Services. To order pictures from the show go to [rockvalleylivestock.shootproof.com](http://rockvalleylivestock.shootproof.com) or email [megan@rockvalleylivestock.com](mailto:megan@rockvalleylivestock.com).

In addition to the show, there were a variety of contests and activities for kids to participate in. The contests kicked off with a judging demonstration followed by a competition facilitated by Mr. Jason Corey of Painted Post, NY. After judging, youth participated in a knowl-



edge contest which included a test, meat station, quality assurance station, feed identification, breed identification, and equipment identification. Saturday

evening, after a junior business meeting, show attendees had a chance to get a BBQ chicken dinner and participate in a very fun and competitive corn hole competition. The top two corn hole teams each won a set of NYJBPA corn hole boards.

Sunday morning saw sunny skies and much warmer temperatures as well as the start of the team fitting contest. Thirteen teams of four to five kids participated for the top 5 places. Teams had 45 minutes to fit an animal for the show ring. During a break in the show, a special award was presented to Dan McGee. He won the NYBPA 2021 Value Discovery Award for his 86 years of support to NYBPA, specifically the youth. Dan says, "The kids are the future."

Thank you to our judge Bill Dunn for his time judging the show and for helping the youth further improve themselves and their cattle, for Jason Corey for overseeing the judging contest, Sara Fessner, NYJBPA advisor, Brenda Dermody and Karen Clark for help in the show office, Kirby Dygert for announcing the show, Karen & Jim Insley, Zack Welker, Laura Kwilos, and Skip Lear for helping in the ring and ring-side, Megan Andersen of Rock Valley Livestock Photography for being the show photographer, Dr. Keith Carlson, James Foss, and the Genesee County Ag Society for letting us use the grounds for the show, and to all those who helped out to make the show run smoothly for the youth.

A **huge thank you** goes to our show sponsors who helped make this show an awesome experience for the junior beef producers – Sinon Farms, William's Cattle LLC, Hidden Springs Farm, Yankee Angus, Sew Fancy Embroidery, Mark Colf Excavating, Gossett & Son Registered Angus, Growmark, Finger Lakes Livestock Exchange, Michael Sidore, Simme Valley, Amped Up Cattle Company, Bud's View Acres, Willow Dell Farm, Trowbridge Farms, Swede Hay Services, Rugenstein Family Farm, Coryn Red Cattle Company, Bozeman Farms, Clark

Family Farm, WBB Farms, Scootin' Thru Farm, Broughton Cattle Company, Tullyfergus Angus, Tamberlane Farm, Town Line Livestock, Murphy Farms, JKW Polled Herefords, Majin That Farm, AJS Simmentals, Endeavor Cattle Company, Old Glory Farm, Carousel Design, Andersen's Maple Farm, Kemmeren Family Farm, Carmina Wood Morris, DPC, Stoney Ridge Maple Farm, King's Angus Farm, Serendipity Acres Farm Market & Greenhouse, NY Hereford Association, NY Angus Association, Paratore Family, Moon Meadow Farm, Sunrise Farms, Arend Family Farm, Marino Family, Attica Veterinary Associates, State Street Animal Hospital, Marlin Horst & Son, and SG Angus. A great weekend was had by all!



The results of the show are as follows:

## Showmanship

**Master Showman** – Evie Groom

**Reserve Master Showman** – Dylan Bozeman

**Honorable Mention Showman** – Shianne Foss

## Heifer Show

**Overall Supreme Champion Heifer** – Dylan Bozeman

**Reserve Champion Heifer** – Evie Groom

Grand Champion Angus Heifer – Evie Groom

Reserve Champion Angus Heifer – Taylor Schofield

Grand Champion Hereford Heifer – Colten Sugg

Reserve Champion Hereford Heifer – McGuire Insley

Grand Champion Shorthorn Heifer – Kyleene Stierly

Reserve Champion Shorthorn Heifer – Lana Miles

Grand Champion Simmental Heifer – Dylan Bozeman

Reserve Champion Simmental Heifer – Evan Kingdon

Grand Champion AOB Heifer – Kaitlyn Broughton

Reserve Champion AOB Heifer – Makayla Sugg

Grand Champion Commercial Heifer – Frances Greis

Reserve Champion Commercial Heifer – Madeline Gabel

## Market Steer Show

**Grand Champion Steer** – Gianna Marino

**Reserve Champion Steer** – Nathan Reynolds

## Dairy Steer Show

1<sup>st</sup> – Spencer Broughton

2<sup>nd</sup> – Carter Kuipers

3<sup>rd</sup> – Ruth Kuipers

4<sup>th</sup> – Grant Kuipers

## Bred & Owned Class

**Champion** – Makayla Sugg

**Reserve** – Owen Grefrath

*\*Photos courtesy of Megan Andersen, Rock Valley Livestock Photography*





President- Daisy Trowbridge  
 Vice Pres.- Makayla McLenithan  
 Secretary- Patrick Stark  
 Treasurer- Samantha Basinait  
 Reporter- Patrick Stark  
 Jr. Advisor - Sara Fessner



## Jr Spring Preview (cont.)

### Judging Contest

#### Pee Wee

1<sup>st</sup>- Laramie Pyra                      2<sup>nd</sup> – Eli Schutz  
 3<sup>rd</sup> – Addison Snyder                4<sup>th</sup> – Payton Ford  
 5<sup>th</sup>- Grant Pyra

#### Juniors

1<sup>st</sup> – Leslie Mesch                      2<sup>nd</sup> – Cody Carlson  
 3<sup>rd</sup> – Audrey Dorman                4<sup>th</sup> – Rith Kuipers  
 5<sup>th</sup> – Ellie Tanner

#### Intermediate

1<sup>st</sup> – Nate Blair                        2<sup>nd</sup> – Evan Broughton  
 3<sup>rd</sup> – Morgan Griffin                4<sup>th</sup> – Kaitlyn Broughton  
 5<sup>th</sup> – Daisy Trowbridge

#### Seniors

1<sup>st</sup> – Shianne Foss                    2<sup>nd</sup> – Rylie Lear  
 3<sup>rd</sup> – Makayla McLenithan        4<sup>th</sup> – Allison McNamara  
 5<sup>th</sup> – Caleb Carlson

### Knowledge Contest

#### Pee Wee

1<sup>st</sup> – Emma Montross                2<sup>nd</sup> – Grant Pyra  
 3<sup>rd</sup> – Lily Trowbridge                4<sup>th</sup> – Dakota Ford  
 5<sup>th</sup> – Frances Greis

#### Juniors

1<sup>st</sup> – Luke Wilson                      2<sup>nd</sup> – Madeline Gabel  
 3<sup>rd</sup> – Leslie Mesch                    4<sup>th</sup> – Makayla Sugg  
 5<sup>th</sup> – Jenna Weixlmann

#### Intermediate

1<sup>st</sup> – Allison McNamara              2<sup>nd</sup> – Morgan Griffin  
 3<sup>rd</sup> – Kaitlyn Broughton            4<sup>th</sup> – Lana Miles  
 5<sup>th</sup> – Evie Groom

#### Seniors

1<sup>st</sup> – Brooke Gerhardt                2<sup>nd</sup> – Nathan Reynolds  
 3<sup>rd</sup> – Anna King                        4<sup>th</sup> – Caleb Carlson  
 5<sup>th</sup> – Jillian Miles

### Team Fitting Contest

**1<sup>st</sup> Place Team** – McGuire Insley, Morgan Griffin, Makayla Sugg, Isabella Montross

**2<sup>nd</sup> Place Team** – Jillian Miles, Celes Paratore, Chloe Landphair, Leslie Mesch

**3<sup>rd</sup> Place Team** – Cody Noel, Allison McNamara, Camden Milhollen, Laramie Pyra

**4<sup>th</sup> Place Team** – McKayla McLenithan, Madeline Gabel, Claire Bliss, Chelsea Lippert

**5<sup>th</sup> Place Team** – Mandy Hurlburt, Amelia Paratore, Kennedy Whiting, Lily Trowbridge

### Corn Hole Competition

**1<sup>st</sup> Place Team** – Bill & Travis Kauffman

**2<sup>nd</sup> Place Team** – Mike Whiting and Austin Kelly

## Welcome NYJBPA New Members

2 - Lydia Covert

## Jr. Essay Contest Winners

The results of the Jr Essay Contest are:

### 1st Place

(receiving brand new A.I. kit)

***Isabella Montross, Weedsport, NY***

### 2nd and 3rd Place

(each receiving a \$100 Select Sire gift card)

***Madelynn Pimm, Bergen, NY***

***Madeline Gabel, Lawtons, NY***

Congrats to the winners! Thank you Alta Genetics for donating the kit to the Jr.

Scholarship Auction and to Herm Weber of HLW Acres, Attica, for purchasing the kit and donating it back to a junior!



## UPCOMING EVENTS

August 20th.....Early Entry Jr Beef Expo Show  
 Deadline  
 August 30th..... Beef Day, NYS Fair  
 Sept. 10th.....Entry DEADLINE for Jr Beef  
 Expo Show  
 Sept 24th.....Beef Expo,  
 Showmanship & Judging  
 Sept 25th.....Junior Beef Expo Show  
 November.....Cobleskill Meat Lab &  
 Repro Education Event  
 December 31st.....Incentive Points DUE





# **NYJBPA Jr Beef Expo Show**

**Sunday, Sept 25<sup>th</sup> following Beef Expo**  
**R. Lott & Sons Farm (former Empire Farm Day location)**  
**2973 State Route 414 Seneca Falls, NY 13148**

\*Entry fee of \$30 per head. No charge for showmanship. MUST be postmarked by August 20<sup>th</sup>.

\*All entries need to be submitted by Sept 10<sup>th</sup>. There will be no entries accepted after that or at the show.

\*Health Requirements: Consult a NYS veterinarian for our current health requirements for cattle exhibiting at NYS Fairs

\*You must be a member of the NY Jr. Beef Producers' Association to participate. Membership fee is \$10/calendar year. Include membership with your entry (if not already paid for 2022). To verify membership status contact Amanda Dackowsky at [nybeef@nybpa.org](mailto:nybeef@nybpa.org). 2022 NYJBPA membership is Jan 1. – Dec. 31, 2022.

\*Exhibitors must currently own or lease the animal that they are showing. Proper registration papers or lease agreement (if applicable) should be presented at the registration check in.

\*Animals may come in on Saturday, Sept 24<sup>th</sup>, after 5 PM, but should arrive no later than 8:00AM Sunday, Sept 25<sup>th</sup>, and can leave after your show is completed.

\*IAFE National Code of Show Ring Ethics will be followed.

\*No stalling or bedding available; **animals must tie to trailers.**

\*Camping is available but no hook-ups. Please indicate on your entry if you are planning to camp.

\***Questions?** Contact: [nyjbpa@gmail.com](mailto:nyjbpa@gmail.com)

## **SCHEDULE:**

### **Saturday, Sept 24<sup>th</sup>, 2022:**

After 5:00 PM- Cattle can arrive. ***Must be in by Sun. Sept 25<sup>th</sup> at 8:00 AM***

### **Sunday, Sept 25<sup>th</sup>, 2022:**

7:00am – 8:00 am- Cattle check in starts, last call 9:00am

7:00am - 8:00am- Vet Check

9:00am - Steer Weigh-ins

10:00am – Showmanship, followed by Steer/Breed Show (steers will show first followed by heifers)

### **Hotel Information:**

Rooms can be reserved at your choice hotel in the area. There are several options in the Seneca Falls/Waterloo area including these ones listed below.

The Gould Hotel - 315.712.4000 at 108 Fall St. Seneca Falls, NY 13148

Quality Inn & Suites – 315.539.5011 at 2468 State Route 414 Waterloo, NY 13165

Microtel Inn & Suites – 315.539.8438 at 1966 Route 5 & 20 Seneca Falls, NY 13148

Hampton Inn & Suites – 315.539.3939 at 1950 Balsley Rd. Seneca Falls, NY 13148



# NYJBPA Jr Beef Expo Show

Sunday, Sept 25<sup>th</sup> @ R. Lott & Sons Farms, Seneca Falls

*Complete One Form Per Person*

Early Entry Deadline: August 20<sup>th</sup>

All Entry Deadline: Sept 10<sup>th</sup>

**\*Please note\* There will be no entries accepted at the show or after Sept 10<sup>th</sup>**

Name: \_\_\_\_\_ Age (as of 1/1): \_\_\_\_\_ Exhibitor's DOB: \_\_\_\_\_

Address: \_\_\_\_\_

Phone: \_\_\_\_\_ Email: \_\_\_\_\_

**Showmanship (please circle):**

**Class 1 Pee Wee: 1-8    Class 2 Junior: 9-13    Class 3 Intermediate: 14-17    Class 4 Senior: 18-21**

**BEEF SHOW:**

**\*\*Showmanship is Mandatory for ALL Exhibitors\*\***

**Class A:** Jr. Heifer Calf (Born after Jan. 1, 2022)

**Class B:** Sr. Heifer Calf (Sept. 1- Dec. 31, 2021)

**Class C:** Jr. Intermediate Heifer (May 1- Aug. 31, 2021)

**Class D:** Jr. Yearling Heifer (Jan. 1- April 30, 2021)

**Class E:** Sr. Yearling Heifer (Sept. 1 – Dec. 31, 2020)

**Class F:** Cow/Calf

**Class G:** Bred and Owned Female (Registered Cattle Only)

**Class H:** Male Calves (bulls or steers born after Jan. 1, 2022)

**Class I:** Market Steers

**Class J:** Dairy Steers

### Entry Form for All Cattle

Breed	Class	DOB	Name	Registration #
_____	_____	_____	_____	_____
_____	_____	_____	_____	_____
_____	_____	_____	_____	_____
_____	_____	_____	_____	_____

**Entry Fee-** Total # of Animals \_\_\_\_\_ x \$30/head (Postmarked by Aug. 20th)      \$ \_\_\_\_\_

**Late Entry Fee-** Received After Aug. 20<sup>th</sup>, Additional- \$10/head      \$ \_\_\_\_\_

**Sponsorship** donation towards show (optional)      \$ \_\_\_\_\_

**NYJBPA Membership-** If not yet paid for 2022, \$10/member \$25/family      \$ \_\_\_\_\_

**Total:**      \$ \_\_\_\_\_

Camping Spot Requested Yes \_\_\_\_\_

**Payment MUST be enclosed with entry form. Make checks payable to NYBPA.**

**Send entries to: Sara Fessner, 6899 Gauss Road Bloomfield, NY 14469**



# NYJBPA CALENDAR FUNDRAISER

## Additional Information for the 2023 Calendar

---

- ❖ Calendars will be mailed to all calendar sponsors, NYBPA sponsors, and all NY Beef Producers Association members, as well as handed out at NY Farm Show.
- ❖ All proceeds from the calendar will benefit educational opportunities for the NY Junior Beef Producers Association.
- ❖ Ad space is available on a first-come, first-served basis.
- ❖ Full page, half page, and business card ads will be in FULL COLOR.
- ❖ For \$5.00, you can promote *any special day* on the calendar to highlight a cattle show, customer appreciation day, sale/auction, or even a birthday! (First come first serve on dates).

*We appreciate your continued support of the NYJBPA!*

**Ad and Payment Deadline:  
August 31st**

\*\*If you are submitting a new or revised ad, please email a PDF version to

[nybeef@nybpa.org](mailto:nybeef@nybpa.org)

Checks made payable to:

**NYBPA**

Mail payment and order form to:

NYBPA

Amanda Dackowsky  
10040 Hooker Hill Road  
Perrysburg, NY 14129

-----  
Please detach and keep for your records as a receipt:

I/We, \_\_\_\_\_, supported the NY Junior Beef Producers Association by placing an ad(s) in their 2023 calendar. I paid \$ \_\_\_\_\_ total for the ad(s).

# NYJBPA CALENDAR FUNDRAISER

## Order Form for the 2023 Calendar

<b>FULL PAGE AD</b>						
or						
<b>½ page   ½ page</b>						
<b>Business Card</b>		<b>Business Card</b>			<b>Business Card</b>	
1	2	3	4	5	6	7 Spring Preview
8 Spring Preview	9	10	11	12	13	14
15	16	17	18	19	20	21 Cow Sale, NY
22	23	24	25	26	27 Jr's Birthday 16	28
29	30	31				

- FULL PAGE      11" x 6.5" -- \$200.00      QTY \_\_\_\_ x \$200.00 = \$ \_\_\_\_\_  
 HALF PAGE      5.5" x 6.5" -- \$125.00      QTY \_\_\_\_ x \$125.00 = \$ \_\_\_\_\_  
 BUSINESS CARD      3.5" x 2" -- \$50.00      QTY \_\_\_\_ x \$ 50.00 = \$ \_\_\_\_\_  
 ONE-DAY LISTING      (Show/Sale/Save the Date)      QTY \_\_\_\_ x \$ 5.00 = \$ \_\_\_\_\_

Date: \_\_\_\_\_      Event: \_\_\_\_\_  
MONTH      DAY      Additional Date listings add on back of form

CHECK THE APPROPRIATE BOXES BELOW:

TOTAL = \$ \_\_\_\_\_

Use the SAME ad as last year

Payment included

Will submit a new/revised ad

Please invoice me

Name: \_\_\_\_\_ Phone: (\_\_\_\_) \_\_\_\_ - \_\_\_\_\_

Business Name: \_\_\_\_\_

Address: \_\_\_\_\_

Email: \_\_\_\_\_ Website: \_\_\_\_\_



**What is conflict  
costing you?**

**NYSAMP.COM**

**866.669.7267**

## **ALWAYS HIGH STANDARDS**

- Confidential
- Voluntary
- Timely
- Professional Neutrality
- Low cost or free



## **A VIEW FROM THE TRACTOR SEAT** By Paul Trowbridge

The view this month is full of optimism every farmer this time of the year has to be the optimist or he wouldn't get the tractor out of the barn. The prices for all inputs are very high the farmer has a tough year coming and we know it we hope and pray for good weather a great crop and prices so we can keep going.

Planting has started weather is giving the northeast a break this might be the year I take grandpa's advice he always said to wait till the barn swallows are home to plant then when the neighbor starts to plow go on vacation for a week. He was always pretty right that lets the ground warm up and the crops will grow right by those planted in the cold ground.

It is always a hard decision to make but plant we will I have thought about taking all our planting money and fuel money and going to Las Vegas. But I am afraid of all the generations that have been planting on this land for over 150 years would be looking for me in the hereafter.

A very hard decision for all farmers this year but America needs to eat so plant we will people will need to understand the prices this fall because the world will need food and some things we can go without but the food is not one of them.

Agriculture is the backbone of the world not just America the world. We have only 2 percent of the population feeding the other 98 percent and way too many people don't understand how long the food chain really is people think having a toilet paper shortage was a problem pray we don't have a food shortage.

Please plant a garden and try to understand what a farmer goes through to put food on the tables of the world. Good weather and plentiful crops and our farm will live to play another day.

Thanx for readen  
Paul

P.S. It always tastes better if you grow it yourself



# FARM CREDIT EAST

## HOW DOES YOUR **BUSINESS GROW?**



---

**Loans and Leases**

---

**Tax Services**

---

**Payroll Services**

---

**Business Consulting**

---

**Record-keeping**

---

**Country Home Loans**

---

**FarmStart for New Businesses**

---

**Real Estate and  
Equipment Appraisals**

---

**Crop Insurance**

The answer is simple: available credit. Farm Credit East is committed to supporting the agriculture, commercial fishing and forest products businesses that New York's economy depends on. Our lending services will give you the capital you need to grow your business — and that's good for everyone. Contact our lending experts today at the branch closest to you. **Loans for real estate, machinery and equipment, livestock and operating expenses.**

FARMCREDITEAST.COM  
800.562.2235





Daryl Hoover  
315-545-2027

Skip Lear  
315-226-2198



SCAN ME

## NEW YORK'S SOURCE FOR BEEF CATTLE HANDLING EQUIPMENT



Calving  
Pens



Basic  
Chutes,  
Squeeze  
Chutes,  
Headgates



Bale  
Feeders



Check Out Our Gates & Corral Panels  
At Finger Lakes Livestock Exchange



Priefert  
Equipment  
& Panels  
In Stock



**STOCKMAN'S CHOICE**

built for your farm  
**marweld**

MARTIN'S  
**Feeders & Equipment**

**Priefert**<sup>®</sup>

# Two Great Angus Phenotypical Females *come together*

Thomas Primrose 4172 AAA 14687162



Dam's Maternal Grand Dam

Dam's Paternal Grand Dam



*Shanaha* Rally Forever Lady 181B AAA 14163681

## with Deer Valley Growth Fund

*to produce an incredible Genotypical Female!*

Deer Valley Growth Fund AAA 18827828



TVF *Primrose Growth Fund 23*

DOB: 3/21/20 AAA# 19802068

Selling with a March 4, 2022 heifer calf (AAA# 20300221)  
by her side out of Schaack Icon 9212 AAA# 19682546.

This complete female checks all the boxes

CED	WW	YW	DOC	MARB	\$M	\$B	\$C
+14	+79	+144	+20	1.19	+72	+191	+320
3%	10%	5%	20%	10%	25%	3%	2%

**Don't miss the Opportunity to acquire this foundation female at the NYS Angus Sale May 14<sup>th</sup>, 2022**

**Video and Pictures can be found by 4/30/22 at [www.thunderviewfarms.com](http://www.thunderviewfarms.com) and on our Facebook Page [facebook.com/Thunder-View-Farms](https://facebook.com/Thunder-View-Farms)**

To Visit and check out the pair for yourself contact: Ric Coombe (914) 799-1091



# New York Hereford Breeders Membership Application

Name \_\_\_\_\_ Farm Name \_\_\_\_\_  
Address \_\_\_\_\_ City \_\_\_\_\_ State \_\_\_\_\_ Zip \_\_\_\_\_  
County \_\_\_\_\_ Phone \_\_\_\_\_ E-Mail \_\_\_\_\_

**Membership: \$50.00 (2 Years)- Make checks payable to NYHBA and mail to:  
Brenda Dermody, 2405 Limerick Road, Linwood, New York 14486**

Glade Haven Herefords  
Tim Dennis  
3550 Old County Road  
Penn Yan, NY 14527  
315-536-2769  
tdennis@trilata.com

Mayer Cattle Farm  
John Mayer  
8004 Meacham Hill Road  
Salamanca, NY 14779  
716-984-9593  
jmayer@mayerbrothers.com

Rambling M Farm  
Bill & Chris Metch  
3208 State Hwy. 206  
Bainbridge, NY 13733  
607-967-3020  
wmetch@stny.rr.com

SK Herefords, LLC  
Schubel, Keppler, Welker  
11021 Ryan Road  
Medina, NY 14103  
585-798-4088  
skherefordscattle@gmail.com

JKW Polled Herefords  
John & Kathi Wagner  
83 Howard Hall Road  
Catskill, NY 12414  
518-945-2638 or 518-469-3777  
jkwpolledherefords@gmail.com

Updyke's Flagmarsh Ranch  
Grady & Darlene Updyke  
51 Updyke Road  
Waverly, NY 14892  
607-565-7357  
flagmarshranch@stny.rr.com

Spring Pond Farm  
John & Anita Kriese  
4385 Italy Hill Road  
Branchport, NY 14418  
315-856-0234  
hereford@frontiernet.net

Your Hereford Farm  
Could be Here  
Contact:  
Brenda Dermody  
585-233-0634  
NYHB Treasurer



## ANGUS CATTLE

### AT EASE ACRES REGISTERED ANGUS



BREEDING & SHOW STOCK  
WHOLESALE OF ALL NATURAL, PASTURE RAISED BEEF

Derrick & Nicole DeBoer  
253 Line Rd, Berne NY 12023  
607.280.8111/518.526.6623

www.AtEaseAcres.com  
AtEaseAcres@gmail.com

## BEEFMASTER CATTLE

### LETENDRE FARMS

391 Allen Road  
Richfield Springs, NY 13439  
Phone: 315-717-1037  
Email: letendrefarmny@yahoo.com

**BEEFMASTER**  **Beefmaster Cattle**  
BREEDERS UNITED

**REGISTERED - NATURALLY RAISED**

## HEREFORD CATTLE

### Charlesworth Family Farm

Registered & Commercial  
Black Angus Cattle



John R. Charlesworth  
8984 New Albion Rd.  
Little Valley, NY 14755  
716-938-6676

### JKW Polled Herefords



John and Kathi Wagner  
83 Howard Hall Rd  
Catskill, NY 12414

(518) 469-3777 - cell  
(518) 945-2638 - home  
jkwagner@mhccable.com

www.jkwpolledherefords.com

### Murphy Farm Registered Black Angus



Peter Murphy  
1132 Rt. 80  
Tully, NY. 13159

Home: 315-696-6092

Cell: 315-706-1693

## ROOFING/SIDING

### Metal Roofing & Siding

cut to your length within 24 hours  
painted, galvalume, galvanized, aluminum  
18 colors in stock, #1 & #2

- ✓ trim & accessories
- ✓ windows & doors
- ✓ sliding door track
- ✓ poly/glass board

### E.B. Martin Roofing Supply

2845 Rte 364  
Penn Yan NY 14527  
315-536-0944

## Yankee Beef



NORTH JAVA, NY

www.yankeebeef.com  
716-479-0321 Erica

FREEZER BEEF  
REGISTERED BLACK ANGUS  
SOON: SHOW CALVES



## RED ANGUS CATTLE

# ERWINDALE FARMS

## Red Angus

Ellen TenEyck

Jason TenEyck, Kendra Lotz, Karla & Jayce  
1908 County House Road  
Waterloo, NY 13165  
315-246-1359/315-246-1394  
[erwindalefarms@yahoo.com](mailto:erwindalefarms@yahoo.com)

Visitors Welcome Only 6 miles South of I-90 exit 41



5887 ST. RT. 23, CINCINNATUS, NY 13040

## REGISTERED RED ANGUS SEEDSTOCK - BULLS - HAY - STRAW

JAKE CHRISTY 607-342-0880  
JOSH CHRISTY 607-345-1178  
DAVE CHRISTY 607-423-2366

[sales@uniformpro.com](mailto:sales@uniformpro.com)  
[www.brackelridgecattleco.com](http://www.brackelridgecattleco.com)

## SIMMENTAL CATTLE

## MONTROSS BEEF CATTLE

Reg. Red Angus & Herefords

Feeders/Freezer Trade



Dennis and Linda Montross & Family

9971 Dietzel Rd.  
Weedsport, NY 13166

Chris: 315-406-2042  
Dennis: 315-730-5034  
[lamontross2002@yahoo.com](mailto:lamontross2002@yahoo.com)

*Wayward  
Wind Ranch*

Richard & Michelle Phillips

3974 Franklin St. Rd.  
Auburn, NY 13021  
315-255-1808

[www.waywardwindranch.com](http://www.waywardwindranch.com)  
[waywardwindranch@hotmail.com](mailto:waywardwindranch@hotmail.com)



Registered Red Angus  
Bulls, Cows & Heifers  
for sale

## Elm Side Farm

### Registered Simmental Cattle

### Also Registered SimAngus Genetics



Show Calves and Breeding Stock for Sale  
Cattle for the small Breeder, calm dispositions.  
Visitors are always welcome  
Call for directions

## THE REYNOLDS FAMILY

Art, Barb, Roger and Darby

836 Little Dryden Rd, Walton, N.Y. 13856  
Barn: 607-865-6888 Cell: 607-434-3058  
[elmsidefarm@frontiernet.net](mailto:elmsidefarm@frontiernet.net)



Hillview Farm

## Registered Cows & Heifers For Sale

Allan Maxian | 7415 Route 80 | Fabius, NY 13063 | (315) 882-1718  
[allanmaxian.la@gmail.com](mailto:allanmaxian.la@gmail.com)

## THORPE

USDA ALL-NATURAL  
BEEF  
PORK  
Retail / Wholesale



NYS  
AWARD-WINNING  
QUALITY HAY  
Retail / Wholesale

## Farms

SIM-ANGUS CATTLE  
2021 ROUTE 11  
LAFAYETTE, NY 13084

*Shelley Thorpe* 315-677-3342 *Tim Thorpe*  
[www.ThorpeFarms.com](http://www.ThorpeFarms.com)

## SIMMENTAL CATTLE

**Registered Simm-Angus x Wagyu**



*bred for:*  
**durability & feed efficiency**

*Choose Wagyu for Improved*

- marbling
- beef quality
- fat profile

**F1-Fullblood Wagyu Available**

*802-376-6729 ~ Mary Beth*

- Vaccinated
- High Tenderness
- SCD-AA Verified

\*SCD-AA fat profile has been found to indicate low melting point (healthier) fats

**James D. Frueh ~ (518) 436 1050**

SGF BC Lookout 7024 313R  
SCD-AA 9




**Registered Angus  
1-3 year old Bulls  
Bred & Open Heifers  
Bred Cows  
Cow Calf pairs  
Feeder Calves  
High Tenderness  
SCD-AA Verified  
Vaccinated**

*Stoffels Glenview Farm*

## SHOW SUPPLIES


# HIGHLAND



## LIVESTOCK SUPPLY, LTD

**The Best In Livestock Supplies & Equipment  
From Brands You Know & Trust**


- Allflex Identification
- Andis Clippers
- Apache Creep Feeders
- Easy Way Fly Stations
- Ritchie Fountains
- Smidley Steer Stuffers
- Speedrite Fence Energizers
- Stronghold Equipment
- Sullivan Supplies
- Titan West Equipment
- Tru-Test Scales



**330-457-2033**

PO Box 190 - New Waterford, OH 44445  
[WWW.HIGHLANDLIVESTOCKSUPPLY.COM](http://WWW.HIGHLANDLIVESTOCKSUPPLY.COM)

## LIMOUSIN CATTLE



# Rugenstein FAMILY FARM

Randy & Karen Rugenstein  
Becky & Tom Snyder  
Amy & Mike Pyra

585-398-2273  
585-746-5039  
RFFarm@hotmail.com

1848 Risser Rd  
Canandaigua, NY

**Raising Simmental Cattle With Proven Genetics**

*"The Legacy Continues"*



LENAPE  
LIMOUSIN

RAY & BARB MOYER  
REGISTERED FULLBLOOD  
LIMOUSIN

**Phone: 267-718-0574**  
lenapelimousin@gmail.com  
41 Fretz Rd., Telford, PA 18969  
[www.lenapelimousin.com](http://www.lenapelimousin.com)

**Support "Your" Association**  
Your Farm or Business could be listed here.  
It's only \$120.00 A YEAR!!!  
Send Business card to [nybeef@nybpa.org](mailto:nybeef@nybpa.org)



# Classifieds



**ISO Black Angus Bull to Lease:** Looking to lease a black Angus bull this coming August-September for our small herd of commercial cows. Contact [SimplyCFarm@gmail.com](mailto:SimplyCFarm@gmail.com) or call (518) 763-8665

**Show Supplies For Sale:** Aluminum show box, like new; blow dryer, like new; 4 leather halters, brushes and various other show supplies, asking \$1000. Steel Zimmerman grooming chute, \$500; set of show stall dividers, \$400. Please call 610-390-3506 or email [cinncow876@gmail.com](mailto:cinncow876@gmail.com)

**Good Red Angus Bulls For Sale:** Sharp, very well mannered, vaccinated, tested, and calving ease bulls. Contact Wayward Wind Ranch 315-567-6432 or 315-255-1808

**Bulls For Sale:** Lim-Flex Bulls, yearlings, black, double polled for sale – CALL Drew 585-831-6699  
Locust Lane Limousin – Perry

**For Sale:** Reg. performance-bred Black Angus yearling bulls. “AI” sired by Stunner, Homegrown and Tombstone 050. Their dams and maternal granddams are also “AI” sired. Breeders of Reg. Black Angus for over 40 years, our closed herd is NYSCHAP certified, Johne’s free at the highest rating of 6+. Call for information. Hauman Angus (315) 536-8154

**Herd For Sale:** Commercial Angus/Hereford herd: 12 cows (5-9 year olds, 6-2 year olds, 1- 4 year old) and 1- 5.5 year old Akaushi Bull (Red Wagyu). Bull is 100% DNA certified and Registered with American Akaushi Association. Cows not pregnant checked but should be bred for late summer calves. Asking \$14,000. Luke Beadnell 518-260-4048 [Beadnell21@yahoo.com](mailto:Beadnell21@yahoo.com)

**Classified Ads are FREE to any NYBPA Members.**

**Send information to [nybeef@nybpa.org](mailto:nybeef@nybpa.org)**

**Classified Ads also appear on the website at [www.nybpa.org](http://www.nybpa.org)**

**COCHECTON MILLS**  
INC.

*“Supreme Quality Feeds”*

Custom Feeds • Fertilizers • Farm Supplies

Bulk and Bagged Feed Deliveries

30 Depot Rd., Cochecton, NY 12726

(845)932-8282

[www.cochectonmills.com](http://www.cochectonmills.com)

**J.F. ZUILL**  
**Agricultural Enterprises**

Livestock Transport- BQA Certified- Local & Long Distance

Clean Safe Equipment- Experienced- Fully Insured

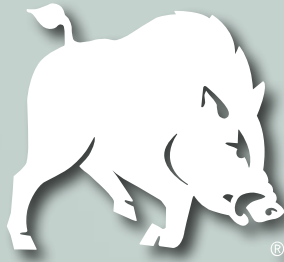
Hay Straw- Mulch- Equipment Sales- Flatbed Service

Cell- 607-316-0258

Phone-607-895-6478

Bainbridge, New York





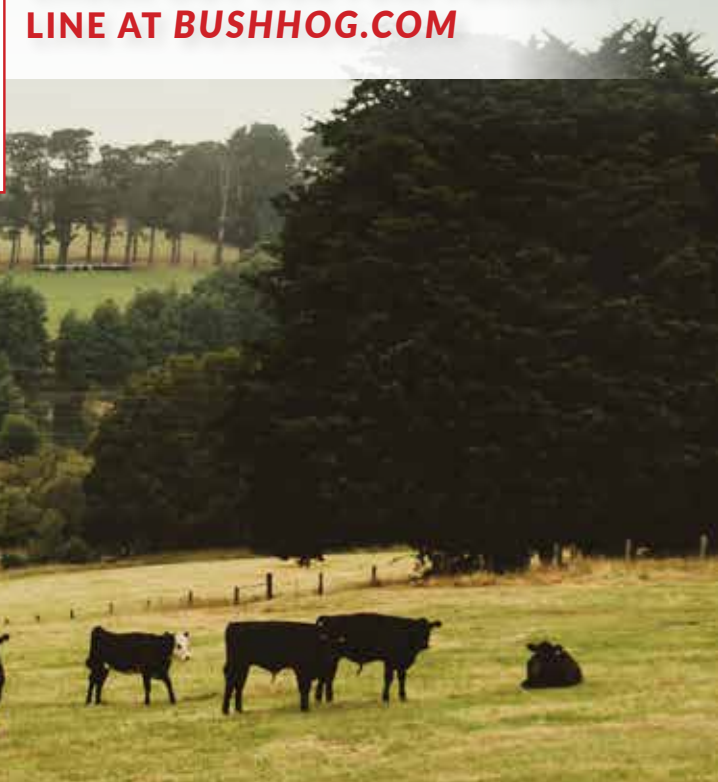
**IF IT DOESN'T SAY  
BUSH HOG®  
IT JUST WON'T CUT IT™**

**TRANSFORM YOUR PROPERTY INTO A LAND OF OPPORTUNITY**

**OUR FLEX-WING ROTARY CUTTERS ARE PERFECT FOR  
MAINTAINING A ROLLING PASTURE OR ORCHARD, OR CLEARING HEAVY CROPS.**



**CHECK OUT OUR FULL PRODUCT  
LINE AT [BUSHHOG.COM](http://BUSHHOG.COM)**



**ASK ABOUT ADDITIONAL  
DISCOUNTS AVAILABLE  
TO MEMBERS OF NEW YORK  
BEEF PRODUCERS  
ASSOCIATION.**

**ROTARY CUTTERS FROM 4'-20'  
HAY TOOLS  
LANDSCAPE, TILLAGE, LAND MAINTENANCE  
& MATERIAL HANDLING EQUIPMENT  
AND SO MUCH MORE!**

**CONTACT US FOR MORE INFORMATION :**

 2501 GRIFFIN AVE. SELMA, ALABAMA 36703  800.363.6069  [BUSHHOG.COM](http://BUSHHOG.COM)



**Cooperia** (shown here) is one of the most prevalent internal parasites in U.S. cattle herds. And infected calves experience 7.4% less average daily gain.<sup>1</sup>



# DON'T LET MONSTROUS PARASITES BITE YOUR BOTTOM LINE

Choose **SAFE-GUARD®** (fenbendazole) when you deworm to take out more profit-eating parasites.

SAFE-GUARD is shown to kill 98.7% of worms, remaining powerful and effective, even in the face of avermectin resistance. Ivermectin on the other hand, is only 45.9% effective.<sup>1</sup> That's a lot of worms left behind to feast. Talk to your veterinarian about switching from ivermectin (or any other -ectin dewormer) to SAFE-GUARD – the right choice for your cattle and ROI.

**BITE BACK AT [KILLMOREWORMS.COM](http://KILLMOREWORMS.COM)**

**IMPORTANT SAFETY INFORMATION:** Do not use in beef calves less than 2 months old, dairy calves and veal calves. A withdrawal period has not been established for this product in pre-ruminating calves. Additionally, the following meat withdrawal and milk discard times apply: SAFE-GUARD Paste: Cattle must not be slaughtered for 8 days. For dairy cattle, the milk discard time is 96 hours. SAFE-GUARD Suspension: Cattle must not be slaughtered for 8 days. For dairy cattle, the milk discard time is 48 hours. SAFE-GUARD En-PRO-AL Type C Medicated Block: Cattle must not be slaughtered for 11 days. For use in beef cattle only. SAFE-GUARD 20% Protein Type C Medicated Block: Cattle must not be slaughtered for 16 days. For use in beef cattle only. SAFE-GUARD Type A and other medicated feed products (pellets, cubes, free-choice mineral, or free-choice liquid): Cattle must not be slaughtered for 13 days. For dairy cattle, the milk discard time is 60 hours.

<sup>1</sup>Stromberg BE, et al. *Cooperia punctata*: Effect on cattle productivity. *Vet Parasitol.* 2012;183(3-4):284-291.

MAHCattle.com • 800-521-5767

© 2022 Merck & Co., Inc., Rahway, NJ, USA and its affiliates. All rights reserved. US-SFG-200400001



 **MERCK**  
Animal Health