

**NEW YORK**

# **Beef Producer**



**NEW YORK BEEF**  
PRODUCERS' ASSOCIATION

May / June 2022

Volume 38 - No. 3

Official Publication of New York Beef Producers' Association  
and New York Junior Beef Producer's Association



PERMIT NO. 27  
EAST AURORA, NY  
**PAID**  
U.S. POSTAGE  
PRESORT STD

**N.Y.B.P.A.**  
10040 Hooker Hill Road  
Perrysburg, NY 14129



# Two Great Angus Phenotypical Females *come together*

Thomas Primrose 4172 AAA 14687162



Dam's Maternal Grand Dam

Dam's Paternal Grand Dam



Rally Forever Lady 181B AAA 14163681

**with Deer Valley  
Growth Fund**

*to produce an incredible Genotypical Female!*

Deer Valley Growth Fund AAA 18827828



**TVF Primrose Growth Fund 23**

DOB: 3/21/20 AAA# 19802068

Selling with a March 4, 2022 heifer calf (AAA# 20300221)  
by her side out of Schaack Icon 9212 AAA# 19682546.

This complete female checks all the boxes

CEB	WW	YW	DOC	MARB	SM	SB	SC
+14	+79	+144	+20	1.19	+72	+191	+320
9%	10%	5%	20%	10%	25%	3%	2%

Don't miss the Opportunity to acquire this foundation female at the NYS Angus Sale May 14<sup>th</sup>, 2022

Video and Pictures can be found by 4/30/22 at [www.thunderviewfarms.com](http://www.thunderviewfarms.com) and on our Facebook Page  
[facebook.com/Thunder-View-Farms](https://facebook.com/Thunder-View-Farms)

To Visit and check out the pair for yourself contact: Ric Coombe (914) 799-1091

**INSIDE THIS ISSUE**

Directory Corrections.....pg. 3  
 President Message.....pg. 4  
 Beef Producers Bulletin.....pg. 5  
 New Members.....pg. 6  
 BQA Article.....pg. 8/9  
 NYS Fair Schedule.....pg. 11  
 Carcass Disposal Article.....pg. 14/15  
 NY Farm Show Recap.....pg. 17  
 News from NYBC.....pg. 20  
 NCBA.....pg. 21  
 Supreme Show Info.....pg. 22  
 View from Tractor Seat.....pg.24  
 Junior Happenings.....pg. 26  
 Classified Ads.....pg. 36

**UPCOMING EVENTS**

**May**  
 May 1 - Jr. Essay Contest Deadline  
 May 7 - Herd Builder Sale & Meat Raffle Drawing, Canandaigua  
 May 12 - Beef Expo Planning Zoom @ 7PM  
 May 17 - Annual Meeting Planning Zoom @ 7PM

**June  
 July**

**August**  
 Aug 30 - Beef Day @ NYS Fair  
 Aug 30 - Supreme Show @ NYS Fair

**September**  
 Sept 24 - Beef Expo, Seneca Falls  
 Sept 24 - Council Meeting  
 Sept 25 - Jr Fall Show



For more events check out our web site -  
[www.nybpa.org](http://www.nybpa.org)  
**Facebook -**  
[www.facebook.com/nybeefproducers](http://www.facebook.com/nybeefproducers)

**The NEW YORK BEEF PRODUCER**

is published bimonthly by the  
 New York Beef Producers' Association.  
 January/February March/April May/June  
 July/August Sept/October Nov/December

**Advertising Rates**

Full Page Color	\$225.00
Full Page (b/w)	\$125.00
1/2 Page (b/w)	\$85.00
1/4 Page (b/w)	\$55.00
Business Card (b/w)	\$25.00

Classified Ads free to paid NYBPA Members  
 5% discount for payment with copy  
 10% discount for 6 consecutive ads  
 5% discount NYBPA Member discount  
 8 1/2" x 11" Magazine format

**Deadline for next issue is JUNE 1st.**

This will be firm so newsletter gets out on time.

For more information contact:

**[nybeef@nybpa.org](mailto:nybeef@nybpa.org)**

\*\*\*Visit our web site **[www.nybpa.org](http://www.nybpa.org)**\*\*\*

**KENT**

QUALITY YEAR-ROUND **MINERAL NUTRITION**

**FRAMEWORK 365 MINERAL**

- Framework 365 Mineral<sup>®</sup> Performance ADE Availa 4
- Framework 365 Mineral<sup>®</sup> Performance MG
- Framework 365 Mineral<sup>®</sup> ADE Sure-Footed
- Framework 365 Mineral<sup>®</sup> Full Flush Availa 4
- Framework 365 Mineral<sup>®</sup> ET Elite ProPath 4
- Framework 365 Mineral<sup>®</sup> Grass-Fed Beef

**Built on Trust**  
EST. 1927

Bryan Beaver 609.760.9303 [bryan.beaver@kentww.com](mailto:bryan.beaver@kentww.com)  
 Mackenzie Chauncey 518.369.0969 [mackenzie.chauncey@kentww.com](mailto:mackenzie.chauncey@kentww.com)  
 Courtney Furst 315.436.0633 [courtney.furst@kentww.com](mailto:courtney.furst@kentww.com)

[kentfeeds.com](http://kentfeeds.com)



## EXECUTIVE COUNCIL

### President:

Ted Card, Jamestown, 716-664-0356

### Vice President:

Skip Lear, Albion, 585-730-9383

### Secretary:

Sara Fessner, Bloomfield, 585-752-1213

### Treasurer:

Brenda Dermody, Linwood, 585-233-0634

### Past President:

Phil Trowbridge, Ghent, 518-369-6584

### Cornell Advisor:

Ashley McFarland, Herkimer, 315-604-2156

### Executive Secretary:

Amanda Dackowsky, Perrysburg, 716-432-9871

## REGIONAL DIRECTORS

**Region 1- Tyler Strub, Andy Beach, Alana Welker**

**Region 2- Ted Card, Amanda Dackowsky,  
Sherry Charlesworth**

**Region 3- Allison Thomas, Amanda Schwartz,  
Karen Clark**

**Region 4- Barb Benjamin, Jill Harmon**

**Region 5- Tim Pallokat, Clint Sampson, Donna Stone**

**Region 6- Ben Brooks, Brandon Riehlman,  
Glenn Forshee, Marissa Phelps**

**Region 7- Dean Wheeler, Andrew Juby,  
Mellissa Spence**

**Region 8/9- Craig Southworth, Joe Eisele,  
Betsy Hodge**

**Region 10- Sarah Hardy, Amanda Larrabee**

**Region 11- Dirk Schubert, Nanette LaTourette,  
JoAnne King**

**Region 12- Kevin Jablonski, Shawn Murphy,  
Erin Perkins**

**Region 13- Rich Blazeski, Ed Moran,  
Mackenzie Chauncey**

**Region 14- currently vacant**

## NY BEEF COUNCIL

### Executive Director:

Jean O'Toole, Westmoreland, 315-796-7907

### NYBPA Representatives

Jennifer Hammond, Bath, 607-346-5492

Peter Lehning, Honeoye Falls, 253-961-3743

## NY JUNIOR BEEF ASSOCIATION

President/NYBPA Rep- Daisy Trowbridge

Vice President- Makayla McLenithan

Secretary/Reporter- Patrick Stark

Treasurer- Samantha Basinait

Jr. Advisor - Sara Fessner

## NYBPA OFFICE

10040 Hooker Hill Road Perrysburg, NY 14129

Phone: 716-432-9871

Email: nybeef@nybpa.org

Web site: www.nybpa.org

## Allied Sponsors

### Platinum Level

Bush Hog Inc.

Merck Animal Health

Zoetis

### Gold Level

Farm Credit East

NY Simmental Association

### Silver Level

Finger Lakes Cattle Company

NY Beef Council

Thunder View Farms

Twin Clover Equipment

VitaFerm/BioZyme

### Bronze Level

NYSAMP

Select Sires

Feedworks USA

Multimin USA

Williams Fence Supplies

## Additional Sponsors

### Photo Contest Sponsor

Kent Nutrition Group

### Supreme Beef Female Program

#### State Fair Supreme Show

Purina Animal Health

### County Supreme Duffel Bags & Vests

Hubner Seed

American Crop Insurance

**THANK YOU  
TO ALL OUR SPONSORS**



# 2021/2022 Directory Corrections

The following are corrections to the directory:

- Region 4 Co-Chairman (pg.7) – Janeen Sparks
- Lisa Sklener, D & L Farm (pg. 66) – farm description should read, “Registered and Commercial Charolais operation. Selling Bulls, Heifers, and Freezer Beef. Exit 61 off Route I-86. North on Route 34 approx. 8 miles. Turn right on Dean Creek Road. Farm 1.8 miles on right.”
- Addition to Genesee County (pg 34): Amy Mathisen, Mills Crest Acres  
5939 Griswold Rd. Byron, NY 14422 | 585-409-3000 | mathisenamy@gmail.com
- Correct address for: Dennis Phelps, Wayne E. Phelps Enterprises Inc. (pg.34)  
1862 Ledge Road Basom, NY 14013
- Junior Members (pg.11) - Autumn Mathisen
- Erwindale Farms Ad/TenEyck Family (pg. 84) - the correct ad is listed on Pg. 46 of this newsletter
- Charlesworth Family Farm ad (pg.74) – the correct ad is listed on Pg. 45 of this newsletter.

*Is Hay & Pasture Important to your business?*



**Maybe it's time you looked into the "PRF"?**

**PASTURE, RANGELAND, FORAGE, RAINFALL PLAN**  
*"Finally, there's common sense coverage for Hay & Pasture!"*

- Solely based on rainfall
- Easy to understand
- No need to keep production records
- Highly subsidized by the USDA
- Pays up to 6 times per year!

The PRF Works for all types of operations:

- Dairy
- Beef
- Equine
- Grain
- Hay/Pasture Only!

*The Service You Deserve™*

We're currently insuring over 600 satisfied growers throughout OH, PA, NY, NJ, MD, NH, VT and WV with the Rainfall policy.



**AMERICAN CROP INSURANCE**


*If you're interested in protecting and increasing the revenue of your operation, the PRF is a great choice. However, it needs to be structured in a way that performs best for your area. At American Crop Insurance, we specialize in the PRF and over 600 of our clients use it to manage their risks.*

*For more information and a quote, please call us anytime.*


**WE HAVE SEVERAL AGENTS PROUDLY SERVING YOUR AREA AND PROVIDING CUSTOMER SERVICE RIGHT AT YOUR FARM!**

**CALL OR TEXT TRAVIS @ 724-944-0670**

**PROVEN SEED** HANDPICKED  
FOR EASTERN FARMERS



**HUBNER SEED™**






Offering grain corn, silage, soybean, and alfalfa seed that is locally tested and adapted for your area with excellent local expertise and service.

For more information, please contact a local Hubner Seed Advisor near you or visit [HubnerSeed.com](http://HubnerSeed.com)

**Kent Williams**  
Western NY  
(717) 327-8095

**John Hill**  
Eastern/Central NY  
(607) 316-0327

Services and products offered by The Climate Corporation are subject to the customer agreeing to our Terms of Service. Our services provide estimates or recommendations based on models. These do not guarantee results. Before making financial, risk management and farming decisions, agronomists, commodities brokers and other service professionals should be consulted. More information at: <http://www.climate.com/disclaimers>. FieldView™ is a trademark of The Climate Corporation. Field Fit®, Hubner Seed & Design™ and MILK MAX SILAGE RESEARCH and Design® are trademarks of Bayer Group. ©2022 Bayer Group. All rights reserved.

# NYBPA President Message



Spring Has Sprung! For our family the joy of this year's calf crop jumping around the barnyard is a great reward, so losing a boot in the mud has a purpose.

As we all are aware, the cost of production for everyone this year is very troubling. Reach out to a fellow beef producer or farm friend that is going through the same difficulties. You might be surprised how you can help ease the stress we are all facing to get fields ready with a cup of coffee and a laugh. I have great confidence that NY State Beef Producers will continue providing the very best for your farm and the beef industry.

I encourage everyone to support our seed stock producers with the upcoming sales across the state. This is a great way to change and improve on your genetics.

Don't let your boots get stuck in the mud, keep walking forward towards growth and prosperity. After all, we are farmers. We are a profession of few that have no guarantees, certainties, and promises. We have perseverance, creativity and courage. We are farmers and we will endure.

Ted

## NEW ADDRESS

NYBPA has a new EMAIL address.  
Please update your records and use:

[nybeef@nybpa.org](mailto:nybeef@nybpa.org)



## COVER PHOTO

*Congratulations  
Megan Andersen!*



Megan took the cover photo of this newsletter, one of the winning entries from the 8th Annual Photo Contest.



# The Beef Producers Bulletin

## **WANTED - Committee Members for Beef Expo & Annual Meeting**

Do you want to help plan our next Beef Expo event and the 2023 Annual Conference? We are looking to form committees to help coordinate these events, mainly with getting ideas for speakers/topics and planning event details. For Beef Expo we will also be looking for hands-on help at the event, Sept 24<sup>th</sup>- 25<sup>th</sup>. There are two planning Zooms set. Please let Amanda Dackowsky know if you would like to be on either or both committees and she will send you the Zoom link. Email Amanda at [nybeef@nybpa.org](mailto:nybeef@nybpa.org) or call/text 716-432-9871.

- Thursday, May 12<sup>th</sup> @ 7PM – Beef Expo Weekend Planning Zoom
- Tuesday, May 17<sup>th</sup> @ 7PM– 2023 Annual Meeting Planning Zoom

## **2022 Meat Raffle- last chance to get tickets in!**

Get your **last-minute tickets** in for the 2<sup>nd</sup> meat raffle for a “Freezer Full of Beef”. Drawings will take place Saturday, May 7<sup>th</sup> at the Herd Builder Sale at Finger Lakes Livestock Exchange. Video of drawing will be posted to our Facebook page that day! Tickets and money need to be returned by Friday, May 6<sup>th</sup> in the mail or in-person before 8:00AM to Amanda Dackowsky at the Herd Builder Sale. Thank you to all who have supported this fundraiser thus far!

## **Supreme Show**

The 13<sup>th</sup> Supreme Beef Female Program has started! All shows must put in a request prior to the show to be a part of the program. This program does have some changes for this year. Official rules can be found on the website – [www.nybpa.org](http://www.nybpa.org). Requests can be made to Amanda Dackowsky at [nybeef@nybpa.org](mailto:nybeef@nybpa.org) or 716-432-9871. See more info on page 22 of this newsletter with the changes and updates as well as pictures of the vest and duffel bag.

## **Beef Promotional Material for Fairs and Events**

NYBPA has beef promotional material including recipes cards, brochures, activity books, coloring books, pop-up displays, and cuts of meat sheets along with NYBPA publications that can be used at this year’s fairs and community events. However, due to limited availability to reorder promotional material such as recipe cards and brochures, we will not be reordering these items. Additionally, we are asking that producers who set these booths up at fairs and events, organize more face-to-face consumer interaction rather than set up unmanned booths for people to take material. Please contact Amanda Dackowsky for more information, details, and ideas on how to promote beef and educate the consumer on beef and beef production. Email Amanda at [nybeef@nybpa.org](mailto:nybeef@nybpa.org).

## **Consumer Outreach and Beef Promotion Funding**

If you are a regional NYBPA director and are looking to host a consumer targeted, beef promotional event in your region, there may be funding to help with your event! Limited funding is available for this summer but if you are planning an event between October 1st, 2022, and Sept 30th, 2023, NYBPA may be able to help you with funding. This can only be used for consumer targeted beef promotion events. Please let Amanda Dackowsky know by July 1st of any event you are having that you would like to see about applying for funds for. She will help you! Email [nybeef@nybpa.org](mailto:nybeef@nybpa.org).

## **Regional News**

Are you doing something cool in your region? Having an event or meeting? Let Amanda Dackowsky know, and she can help promote your event to the membership. Email information to [nybeef@nybpa.org](mailto:nybeef@nybpa.org). Check out the website for up-to-date regional meetings and events - [www.nybpa.org](http://www.nybpa.org)

## **Next Council Meeting**

The next council meeting will Saturday, Sept. 24th following Beef Expo speakers at R Lott & Sons Farm in Seneca Falls. If you are a regional director, please plan to attend.

# 2022 NEW MEMBERS Welcome!

- 1- Michael Janiga | Mac Len Farms | 11161 Jamison Road East Aurora, NY 14052 | 716-807-7880  
1- Jud and Mckensey Ptak | Ptak Farms South | 2350 Genesee Road Arcade, NY 14009 | 585-322-0653  
2- Dean Crandall | Hillside Meadows | 1672 Bates Road Sinclairville, NY 14782 | 716-287-2038  
2- Max & Carrie Gross | Ben's Maple Farm | 6505 Sweeney Hill Road Cattaraugus, NY 14719 | 716-801-1231  
2- Paul F. Starceski | Finn Star Farm | 2816 Minafrench Creek Road | Sherman, NY 14781 | 716-450-3035  
3- Dylan Coyle | Coyle Farms | 3464 Oatka Trail Leroy, NY 14482 | 585-729-3219  
3- Jacob Deys | Green Hill Cattle | 1472 Macedon Center Macedon, NY 14502 | 585-733-1726  
3- Keith Horst | Rocky Ridge Angus | 3090 County Road 18 Stanley, NY 14561 | 585-509-0471  
3- Oliver Oswald | Oswald Farms | 333 Voak Road Penn Yan, NY 14527 | 315-325-1061  
3- George Pickering | Pickering Farms | 3096 Smith Road Canandaigua, NY 14424 | 315-945-7613  
3- Jessica & Ben Wickham | 3619 Flint Road Stanley, NY 14561 | 585-354-5424  
4- Kyle O. Lowery | Lowery Family Farm | 8295 Route 415 Campbell, NY 14821 | 607-438-6585  
4- Aaron Moultrup | Fieldstone Acres | 5363 County Rt 12 Campbell, NY 14821  
4- James Phenes | Hitching Post Meats | 6347 McBeth Road Canisteo NY 14823 | 607-377-1821  
4- Kristen Stewart | Brookside Farm | 23 W Morris St. # 163 Bath, NY 14810 | 607-377-6716  
5- Harold Heminway | 9618 Horseshow Island Road Clay, NY 13041 | 315-350-8086  
6- Don Cascun | Cascun Farm | 1294 State Highway 206 Greene, NY 13778 | 607-875-0452  
6- Nick & Sophia Darling | Darling Family Farm | 50 Durfee Road Groton, NY 13073 | 607-279-4392  
6- Mike Harrington | Harrington Acres | 1885 County Road 2 McDonough, NY 13830 | 607-226-3062  
6- George Lampila | 115 Vennel Road VanEtten, NY 14889 | 607-227-0226  
6- Jay & Gretchen Mahler | Mahler Land & Livestock LLC | 285 Fetters Road Binghamton, NY 13903 | 607-339-1648  
6- Mike Reese | Reese-Run Farm | 268 Dutch Hill Road Pine City, NY 14871 | 607-426-0819  
8- Steve Thesoar | Rose Road Farm LLC | 255 B Rose Road Harrisville, NY 13648 | 315-778-9965  
10- Richard & Patricia Marko | Hillside Meadows Farm | 480 North Gage Road Poland, NY 13431 | 315-725-8822  
11- Jack & Tina Douglas | Old Homestead Farm | PO Box 243 Richfield Spa, NY 13439 | 315-272-9189  
11- Joe & Meghan Potter | Potter Family Ranch | 756 Curtis Lane Hamden, NY 13782 | 607-435-5303  
OOS- Jacob Lipton | Pleasant View Farms | 452 South Road Somers, CT 06071 | 860-803-2777

*\*a former junior member who has joined the adult association*

*~The number before name indicates which region new member joined.*

## **Referring New Members is Rewarded in our Membership Incentive Program**

- 1 member - \$10 toward NYBPA merchandise or advertising.
- 2 members - \$20 toward NYBPA merchandise or advertising.
- 3 members - \$30 toward NYBPA merchandise or advertising.
- 4 members - \$40 toward NYBPA merchandise or advertising.
- 5 members - 2 registrations to NYBPA Annual Conference  
or \$60 in NYBPA merchandise or advertising.

*Each new member over 5- Adds \$10 in NYBPA merchandise, advertising or applied to  
Annual Conference Weekend Registration/Meals in January.*

### **10 members- 1 free Hotel Night at the Annual Conference**

*Mix and Match your awards after 10 new members.*

***2022 Member Rewards Program winners will be announced at the 2023 Annual Conference.***



# NYBPA Herd Builder Female Sale

**Saturday, May 7, 2022 @ Noon  
Finger Lakes Livestock Exchange  
Canandaigua, NY**



**Commercial  
and  
Purebred  
Cattle**

**Open Yearling Heifers  
Bred Females  
and  
Cow/Calf Pairs**



**Catalog on web site @  
[www.nybpa.org](http://www.nybpa.org)**

**Sale Contacts:**

*Skip Lear | 585-730-9383*

*Steve Packard | 585-738-9404*

*Sara Fessner | 585-752-1213*

*Phil Trowbridge | 518-369-6584*



# BQA NEWS

## A Virtuous Cycle: Beef Quality Assurance helps build consumer trust and adds value for producers

By Greg Henderson, Editor, *Drovers*

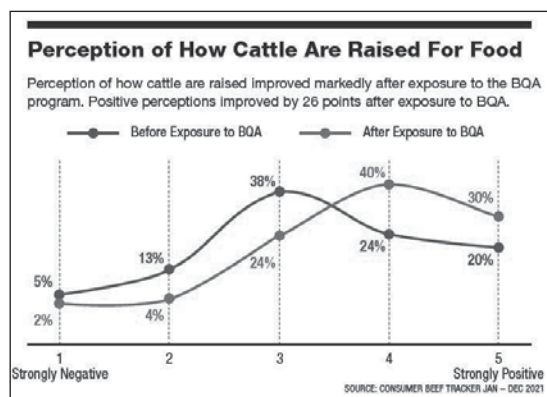
Consumers want to know more about where their food comes from. That fact is driven into the marketplace daily as companies monitor spending habits – especially among millennials and Generation Z, the two groups ranging in age from pre-teen to early 40s. Every major American food retailer has adopted a plan to address growing demands from those consumers. In August 2020, for instance, Walmart announced a goal of sourcing its fresh beef “more sustainably by 2025.” Among the key aspirations included prioritizing soil health, animal welfare, and responsible use of antibiotics.

The company pledged to uphold “our suppliers to the ‘Five Freedoms’ for animal welfare. We expect our suppliers will not tolerate animal abuse of any kind and support our position on the judicious use of antibiotics in farm animals,” said David Baskin, Merchandising Vice President Meat, Walmart. Such corporate decisions impact every cattle producer and will draw greater scrutiny to your management practices. Clay Mathis, director of the King Ranch Institute for Ranch Management, calls those “hard trends.” Ranching faces increasing complexity and regulations, Mathis told attendees at the American Gelbvieh Association convention in Oklahoma City in December, with sustainability and consumer perception influencing beef’s production system. Improving cattle management and natural resource management will also improve production efficiency, and in turn, beef production and ultimately revenue.

“It’s a virtuous cycle. We do things better, we make more money, we help the environment, and we increase consumer demand,” Mathis says. That theory matches up with new Checkoff-funded research by the National Cattlemen’s Beef Association regarding Beef Quality Assurance (BQA). Animal welfare issues rise to the top of consumer concerns with cattle production. According to results from an unaided question, 51% of consumers said they have a concern, with 29% of those mentioning animal welfare. Other concerns such as hormones, antibiotics, and the environment all registered 5% or below.

Beef’s virtuous cycle has been greatly influenced by the BQA program, now in its 35<sup>th</sup> year. Its impact goes well beyond the ranch and feed yard, and today more than 85% of all beef comes from BQA-certified producers.

“BQA positively impacts consumer confidence, and we see more and more supply chain interest as well,” says Josh White, Executive Director, Producer Education & Sustainability for the National Cattlemen’s Beef Association (NCBA). In the same consumer study that identified animal welfare as the leading concern, perceptions of how cattle are raised improved markedly after exposure to the BQA program. Positive perceptions improved by 26 points after exposure to BQA.



Thousands of ranchers, backgrounders, and feedlot operators have become BQA certified in the program that covers common topics such as animal handling, herd health, and record-keeping, working in tandem with the National Beef Quality Audit conducted every five years. All of that helped reduce injection-site lesions and bruising since the 1990s, adding more value to each carcass.

“The added value we’ve found more recently with the BQA program, as we’ve tested it with consumers, is that not only can producers get the latest info on cattle production and management as they renew their BQA certification, but they are also advocating for the industry, by being “counted” as a producer that cares enough to be actively certified,” White says.

Along with consumer research, recent Beef Checkoff campaigns have featured real beef farmers and ranchers from across the country so they can showcase how they raise beef safely, humanely, and sustainably.

“Videos resonate well with consumers, and it helps tell a bigger story and brings a face to the industry, too,” says Sarah Reece, Sr. Executive Director, Brand Marketing at NCBA. Videos and other digital advertising drives a significant number of clicks back to “Beef. It’s What’s For Dinner.com” to get more information about BQA.

“Over the past couple of years, the three campaigns that we’ve created to focus on both beef quality assurance





# BQA NEWS (cont...)

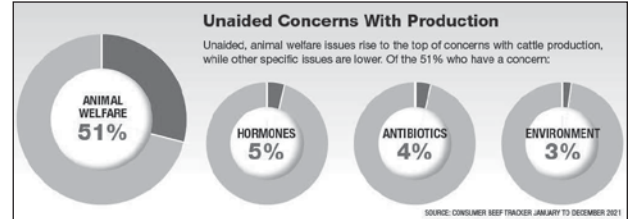
and sustainability have driven over 178,000 visitors to our website, which is huge,” Reece says. “We know from research after those campaigns about BQA and sustainability increases perceptions from consumers about how cattle are raised.”

While consumer campaigns are important, Checkoff-funded campaigns have also targeted chefs. NCBA worked with a food media organization, Chef’s Role, to create a series of videos that featured BQA award-winning operations across the U.S.

“We brought chefs to cattle operations to learn directly from farmers and ranchers how they care for their cattle,” Reece said. “Then, in turn, we take the farmers and ranchers to the chef’s restaurant where they could see how they utilize beef in their restaurants for consumers. We heard repeatedly from the chefs how valuable it was for them to be on the ground with ranchers.”

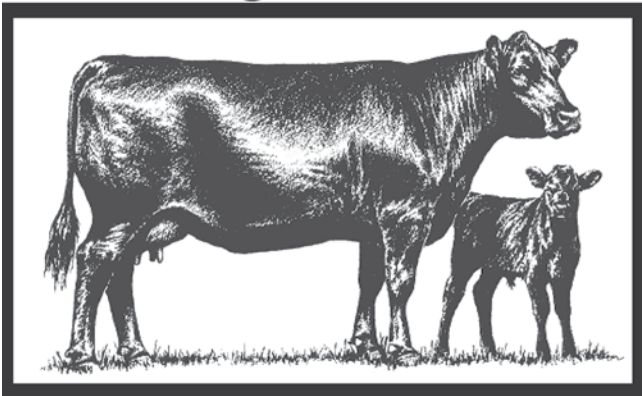
While sustainability initiatives continue to gain momentum in every aspect of society, cattlemen can be proud of their commitment to BQA and that consumers are recognizing the value and positive impact that BQA training and certification represent in the areas of animal health and welfare. White says the checkoff-funded BQA program continues to focus on developing timely, relevant training resources that help producers take great care of their cattle to ensure the industry delivers a high-quality end product to consumers.

“BQA has always been about raising cattle the right way – following the latest common sense, science-backed guidelines deliver great outcomes for meat quality and safety, animal health and welfare, and consumer confidence,” White said. “A producers’ active BQA certification effectively says to consumers ‘I care enough to invest in educating myself on practices that help me produce the highest quality product.’”



## HAUMAN ANGUS

### Registered Black Angus Cattle for sale



- Mature “AI” bred yearling bulls
- Cow, calves, & heifers
- Over 40 years of performance “AI” breeding
- NYSCHAP Certified closed herd
- Johne’s free test zero, Level 6 + (Highest Level)
- Leukosis Free
- BQA Level 2

***Proud Recipient of the 2019 Master Breeder Award  
Presented by the New York Angus Association***

***Breeder of 2015  
Midland Bull Test Award Winner  
“HAF CHISUM A394”  
#1 ADG - Group 1  
#1 Top Indexing Angus Bull  
#4 High Indexing Efficiency Ratio***

**Dewey & Mary Hauman**  
594 Lovejoy Road, Penn Yan, NY 14527  
315-536-8154  
dhauman@aol.com

# WE HAVE WHAT YOU'RE LOOKING FOR...

SELECT NUMBER OF BULLS AVAILABLE PRIVATE TREATY

## The Bulls



C-T SENECA 9095



DOMAIN



WFL MERLIN 018A

# Thank You!

THANK YOU TO OUR LOYAL BUYERS WHO CHOSE THEIR BULL GENETICS FROM FINGER LAKES CATTLE COMPANY IN 2022!

CALL US IF YOU THINK A SON OF C-T DOMINATE 7067, MERLIN, DOMAN, OR SENECA 9095 COULD MOVE YOUR GENETIC IN THE NEXT DIRECTION.

### 2022 PENN STATE BULL TEST

TOP INDEXING RED ANGUS BULL  
JOHN & ANITA KRIESE



## YOU'RE INVITED TO:

### The Red Revival II

Sponsored by the New York Red Angus Association and Hosted by John and Anita Kriese

Sunday, August 14th, 2022 at 10:00 AM

Featuring keynote speakers from Black Belt Cattle Marketing Team: Dr. Lisa Kriese Anderson, Mr. Jeremy May, and Mr. Jessee Tucker

## SAVE THE DATE:

"Power of Red" Bull and Female Sale , April 23rd, 2023

"Power of Red" Bull and Heifer Development Program for Red angus and Hereford Genetics



JOHN & ANITA KRIESE  
(315) 856-0234

SCOTT HARTMANN  
(315) 945-6820

TIM DENNIS  
(315) 856-0183

CHRIS BOYCE  
(716) 818-5464

# 2022 NYS FAIR SCHEDULE

## FIRST ROTATION – Judge: Sheila Jensen, Jensen Bros., KS

Tuesday, August 23 4:00 pm – 9:00 pm

### ARRIVAL OF FIRST ROTATION

Wednesday, August 24

9:00 am  
10:00 am  
12:00 pm  
2:00 pm

**Deadline to Check In Office with Registration Papers**  
Youth Showmanship  
Hay Bale Throwing Contest  
Jr. Hereford Show

Thursday, August 25

10:00 am  
1:00 pm

Shorthorn Open Show-Followed by  
Shorthorn Plus Open Show  
Red Angus Open Show

Friday, August 26

10:00 am  
1:00 pm  
6:00 pm

Charolais Open Show  
Hereford Open Show  
Exhibitor Pot Luck Dinner

Saturday, August 27

8:30 am  
12:00 pm  
1:00 pm

4-H Youth Breed Show/Showmanship  
**Release of First Rotation Cattle & Campers**  
Barn Closed for Cleaning

## SECOND ROTATION – Andy Musgrave, Musgrave Angus, IL

Saturday, August 27 5:00 pm – 10:00 pm

### ARRIVAL OF SECOND ROTATION

Sunday, August 28

9:00 am  
10:00 am  
12:00 pm  
6:00 pm

**Deadline to Check In Office with Registration Papers**  
Jr. Highland Show  
Jr. Angus Show  
Exhibitor Pot Luck Dinner

Monday, August 29

10:00 am

Angus Open Show

Tuesday, August 30  
**BEEF DAY**

10:00 am  
1:00 pm  
3:00 pm

Highland Open Show  
Hay Bale Throwing Contest  
NYS Supreme Female Show

Wednesday, August 31

9:00 am  
4:00 pm  
5:00 pm

4-H Youth Breed Show/Showmanship  
**Release of Second Rotation Cattle & Campers**  
Barn Closed for Cleaning

## THIRD ROTATION – Jake Scott, Krebs Ranch, NE

Thursday, September 1 4:00 pm – 9:00 pm

### ARRIVAL OF THIRD ROTATION

Friday, September 2

9:00 am  
12:00 pm  
2:00 pm

**Deadline to Check In Office with Registration Papers**  
Hay Bale Throwing Contest  
Youth Showmanship

Saturday, September 3

10:00 am  
1:00 pm

Belted Galloway Open Show  
American British White Park Open Show

Sunday, September 4

10:00 am  
12:00 pm  
6:00 pm

All Other Breeds Open Show  
Simmental Open Show-Followed by Sim/Angus-  
Sim/Solution Show  
Exhibitor Pot Luck Dinner

Monday, September 5

9:00 am  
3:00 pm

4H Youth Breed Show/Showmanship  
**Release of Third Rotation Cattle and Campers**





# 85<sup>th</sup> ANNUAL NEW YORK STATE ANGUS SALE

SATURDAY  
**MAY 14<sup>TH</sup>**

1:00 PM AT RODMOND LOTT FARM  
2973 NY 4141, SENECA FALLS, NY 13148

FOR MORE INFORMATION:  
[WWW.NY-ANGUS.COM](http://WWW.NY-ANGUS.COM)

SALE CHAIRMAN:  
ANDREW KING (518) 852-1587  
[AVKING2508@GMAIL.COM](mailto:AVKING2508@GMAIL.COM)

SALE MANAGEMENT:  
RANCE LONG (918) 510-3464  
[RLONG@RANCELONG.COM](mailto:RLONG@RANCELONG.COM)



*Selling the finest Black and Red Angus  
to be found in the Northeast*

## RED ANGUS

**Hillview Farm:** Two short bred heifers that are sure to please.

**Wayward Wind Ranch:** Four open heifers that will catch your eye!

## EMBRYOS

**Trowbridge Angus:** Two offerings from Trowbridge Elba 6100 (top 3% \$ M) sired by SG Salvation and V A R Power Play 7018.

**Leonard Newman Angus:** Two offerings: one from Conley Evergreen 8762 (top 3% \$C) sired by Sitz Resilient 10208 and the other from Linz Lady Whitlock 453-9210 (top 3% \$C) sired by BJ Surpass.

**Majin That Farm:** BJ Surpass embryos from a Deer Valley Growth Fund daughter who is a full sister to the \$11,000 second high selling heifer in the '21 Trowbridge sale.



## BLACK ANGUS

**Acomb Acres and GLC:** A February '22 Connealy Clarity from Frosty Elba Lizzy 564 that ranks in the top 2% for \$M and 10% \$C!

**Dorado Angus and Lux Acres:** A September '21 Deer Valley Wall Street from a productive Niagara daughter of "564".

**Angus Hill/Cheer Up/North Wind Farm:** A November '21 G A R Transcendent from SJH Sure Fire of 1754 8806. Ranks in top 1% \$C.



**Thunder View Farm:** First calf Deer Valley Growth Fund daughter ranked in the top 2% \$C sells along with her March '22 Schaack Icon 9212 heifer.

**Anna King:** A June '20 Stevenson Turning Point daughter who ranks in the top 2% \$M. Bred to Deer Valley Growth Fund.

**Johnson Angus Ranch:** Six open Fall '21 heifers ranking high for \$C. Sired by Athlete, Eastwood, Enhance, Home Town, Kansas and Peyton.

## COW CALF PAIRS

**Mud Creek Angus:** Six year old Connealy Capitalist 028 granddaughter of S A V Blackcap May 4136! Ranks in the top 10% \$M. Sells with a heifer calf at side. Carrying a Deer Valley Growth Fund pregnancy out of Hoffman LLL Pride 9411.

**Central Bridge Farm:** Three year old Thomas Powder River 9053 daughter who ranks in the top 4% for \$M. Sells with her spring born calf.

**CT Junior Republic:** A pair of outstanding cows. A four year old Jindra Acclaim sells with her October '21 S A V Raindance 6848 bull and a five year old S A V Recharge 3436 selling with her October '21 LD Capitalist 316 bull. Two pairs that will surely excite!

**Tullyfergus Angus:** A young first calf heifer from their Tibbie family sired by a Jindra Acclaim son. Sells with her January '22 Stevenson Turning Point heifer calf. Tullyfergus is also sending a Heifer calf pregnancy sired by KR Cadillac Ranch from their Boyd New Day 8005 donor Tullyfergus Africa 173.

**PVF Farm:** Three year old EXAR Monumental daughter from a BC Lookout 7024. Sells with her February '22 Enhance daughter.

## HEIFERS & BRED COWS

**Why Not Farm:** A fancy coming two year old sired by a Deer Valley Old Hickory son. Bred to G A R Sunrise.

**Allan Wesche:** May '21 PVF Insight 0129 granddaughterselling open and ready to breed!

**Yankee Angus:** A pair of three year olds by Baldrige Colonel C251 and Baldrige Command C036 ranking in the top 15% \$C. Selling having weaned their first calves and bred back.



# CARCASS DISPOSAL

By: Dr. Melanie Hemenway, NYSCHAP

Livestock producers need to be prepared for how to handle euthanasia on their farm as well as disposal of downed and dead animals. There are three acceptable methods for euthanasia – chemical, gunshot and captive bolt. The following elements should be considered to aid in the selection of the appropriate method: human safety, animal welfare, restraint, practicality, skill, cost, and carcass disposal.

Your local laws will dictate how carcass disposal can be achieved in your area. If there are no local restrictions, then the New York Agriculture and Markets (AGM) Law has the following provisions for disposal. These provisions are applicable to all farms, including farms operating under a Concentrated Animal Feeding Operation (CAFO) permit.



New York Agriculture and Markets Law § 377. Disposal of dead animals.

The carcasses of large domestic animals, including but not limited to horses, cows, sheep, swine, goats, and mules, which have died otherwise than by slaughter, shall be buried at least three feet below the surface of the ground or otherwise disposed of in a sanitary manner by the owner of such animals, whether the carcasses are located on the premises of such owner or elsewhere. Such disposal shall be completed within seventy-two hours after the owner is directed to do so by any peace officer, acting pursuant to his special duties, police officer, or by a designated representative of the commissioner.

AGM also recommends the following conditions related to onsite burial:

- Locate onsite mortality management activities so that prevailing winds and landscape elements minimize odors and protect visual resources.
- Locate the facility down-gradient from springs or wells whenever possible; at least 200 feet from wells and open water; above the 100-year floodplain elevation; and avoid areas with seasonally high-water tables. (Please note that State law requires that the highest part of the buried animal must have at least three feet of soil over it and burial must occur within 72 hours.)
- Onsite mortalities should not be disposed in liquid manure storages.

Any farm operating under a CAFO permit must carefully observe the provisions of the permit and the farm's Comprehensive Nutrient Management Plan (CNMP), including working with their AEM Certified Planner.

You may also choose to compost dead animals. Farms operating under a CAFO permit that choose to compost must do so in accordance with the Cornell Waste Management Institute (<http://cwmi.css.cornell.edu/>) recommendations or the NY 316 Natural Resources Conservation Service Standards as planned in their CNMP.



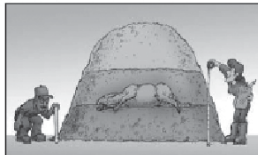
For non-CAFO farms, you may compost mortalities onsite without a permit using the Cornell Waste Management Institute recommendations. In addition, under State law, up to 10 carcasses per year can be from off-site sources, and the animal carcasses must be placed within the compost pile on the day received. To handle additional off-site animals, the farm must obtain a solid waste management facility registration under 6 NYCRR Part 361-3.2(b)(3).



# CARCASS DISPOSAL (cont...)

It is strongly recommended to follow these precautions:

- Be decisive when it's time to cull an animal. Make the decision early while the cow is still marketable. With disposal being more difficult now, it is more likely that every dealer, market, and slaughter buyer will be refusing marginal (weak/nonthriving) calves and cull cows for fear that they will not make it successfully all the way to slaughter.
- If chemical euthanasia is used to dispatch an animal on the farm, that animal cannot be sent to rendering. These chemicals such as Pentobarbital or general anesthetics can remain in the carcass which can taint animal feeds that are produced from rendered animals. Also composting may be restricted due to chemical exposure to birds of prey, scavengers, and neighbors' free-roaming dogs. You must take precautions to be sure that dogs, cats, and wildlife cannot gain access to the animals being composted.
- Do not delay burial or enclosure in a composting bed. The longer you wait to deal with a mortality, the more difficult the carcass will be to handle and the chances of spreading disease will increase.



*Make sure carcass is well covered to keep odors down, generate heat and keep vermin or other unwanted animals out of the pile.*

Feel free to contact Cornell Waste Management Institute (<http://cwmi.css.cornell.edu/>) or NYSCHAP at [melanie.hemenway@agriculture.ny.gov](mailto:melanie.hemenway@agriculture.ny.gov) if you have questions or would like more information about proper euthanasia and carcass disposal.

## THE VOICE OF NEW YORK AGRICULTURE



Supporting today's agricultural needs and creating member opportunities for tomorrow through advocacy and education.

**Join Today**

**800.342.4143**  
**[www.NYFB.org](http://www.NYFB.org)**

# NY AG & MARKETS NEWS

## Free 840 RFID Tags

**FREE**

New York State Department of Agriculture and Markets has removed the limit for orders of 840 RFID tags. The new order forms are available on their website, either scan the QR code supplied here or visit [https://agriculture.ny.gov/system/files/documents/2022/01/ai-489\\_order\\_form\\_producer\\_ear\\_tags.pdf](https://agriculture.ny.gov/system/files/documents/2022/01/ai-489_order_form_producer_ear_tags.pdf). Once your order form is filled out, you can either email it to [daisupplies@agriculture.ny.gov](mailto:daisupplies@agriculture.ny.gov), fax it to 518-485-7773, or mail it to the address on the bottom of the form.

Don't miss out!



**FREE**

**Simme Valley**

Producing Stylish  
Predictable  
Simmental Cattle  
that perform in and  
out of the show ring.



**Simme Valley Fre-Anna**  
Supreme Winner at

Jersey Fresh – Allegany Fair – Erie County Fair Tioga  
County Fair – NY All Breeds Supreme Show NYSF  
Simmental Show, and Gr Champ at Big E

Jeanne White 607-423-4888 [Jeanne@SimmeValley.com](mailto:Jeanne@SimmeValley.com)  
Phil Paradis 607-280-4299 [www.SimmeValley.com](http://www.SimmeValley.com)



Funded by the Beef Checkoff.

Get Beef Checkoff  
news and updates  
in print, email and  
online.

Sign up for  
The Drive by visiting:  
[https://www.beefboard.org/  
the-drive-sign-up-form/](https://www.beefboard.org/the-drive-sign-up-form/)

**The**  
**DRIVE**



Or use the  
QR Code to  
sign-up

# 2022 FARM SHOW

## NYBPA Beef Sundaes A Huge Hit at the NY Farm Show

NYBPA served hot beef sundaes, among other activities, at the 36<sup>th</sup> NY Farm Show in Syracuse on February 24-26<sup>th</sup>. The mashed potatoes smothered in gravy, shredded beef, and cheese, topped with sour cream and tomatoes were a crowd favorite, selling out each day, despite dealing with snowy weather on Friday. Aside from the beef sundaes, NYBPA in coordination with the NY Beef Council and the Angus, Hereford, and Simmental breed associations had live animals on display, games and activities for kids as well as the latest beef producer information and publications. Thursday and Friday featured producer presentations on meat suite, EPDs, feed enhancements, and pasture management. Congratulations to NYBPA member Amanda Schwartz and new members,

Mike Harrington, and Ben/Jessica Wickham for each winning a \$50 Cabela's gift card for the Farm Show membership incentive drawing.



On Saturday, the NY Junior Beef Producers held a business meeting before presenting to the public on a variety of agriculture and beef topics. Thank you to Addy Claudio, Talia Pallokat, and Travis Clark for doing presentations. Several junior members rolled their sleeves up and donned aprons and hats to help serve beef sundaes alongside the adults. The farm show brought in sales of \$12,435 and realized a profit of \$1,413.93. The proceeds from the beef sundaes go to helping put on

educational events for state beef producers.

A huge thank you goes to Sue Bristol, the Montross Family, the Kuipers family, Kathi Wagner, Tim Pallokat, Dick Phillips, Joe Mueller, Matt Hoose, Tom Miller, Karen and Paul Glenister, Karen Clark, and everyone else who helped volunteer at the Farm Show, Megan Andersen of Andersen's Maple Farm and Art Reynolds of Elm-Side Farm for bringing a Hereford and



Simmental animal for display, Ashley McFarland, CNYDLFC Regional Livestock Specialist, Erik Smith, CNYDLFC Regional Cornell Team, Jerry Emerich of Select Sires, and John Clark of Feedworks USA, for doing producer presentations on Thursday and Friday, the staff of the NY Farm Show for all their hard work, and for everyone who took the time to stop at our beef booth. It was a great show and NYBPA looks forward to the 2023 NY Farm Show!





We are humankind  
*for cattlekind.*



It's our duty to help  
protect this sacred bond.  
This is what defines us.  
**BornOfTheBond.com**

All trademarks are the property of Zoetis Services LLC or a related company or a licensor  
unless otherwise noted. © 2021 Zoetis Services LLC. All rights reserved. GBF-00463

**zoetis**

A SMASH  
HIT!

SEMEN AVAILABLE SPRING 2021  
CONTACT ANY PARTNER

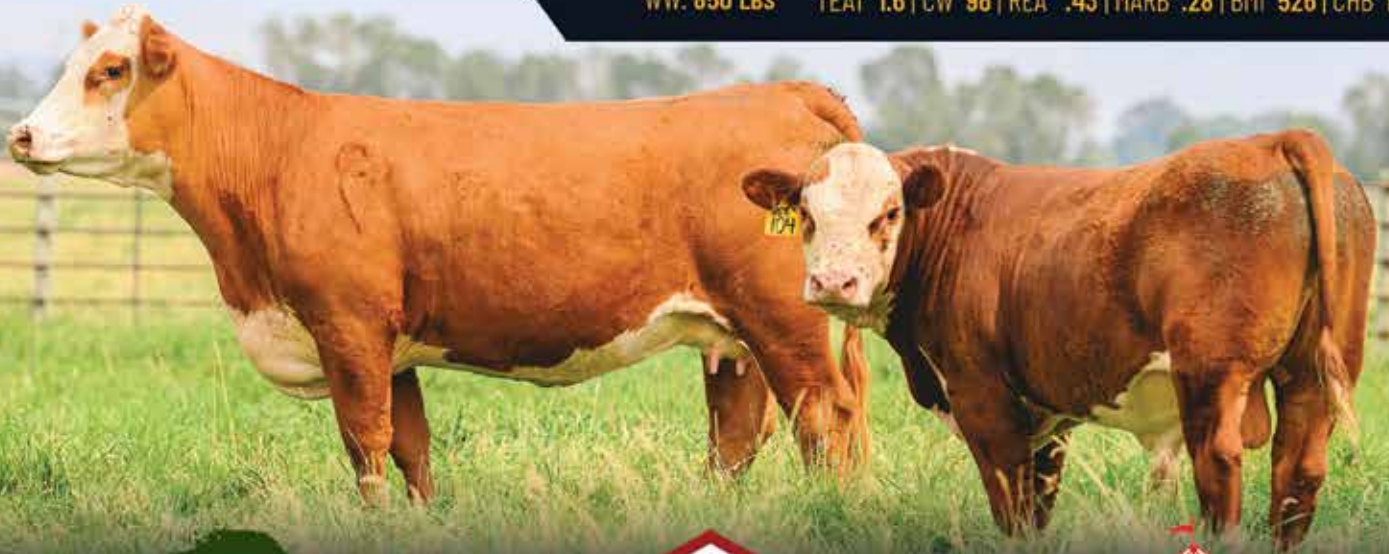


CHURCHILL

**BROADWAY** 104J

AHA: 44267810 DOB: 1/05/21 SIRE: CHURCHILL BROADWAY 858F DAM: CHURCHILL LADY 964G

BW: 72 LBS    CE 8.9 | BW 1.8 | WW 75 | YW 120 | MM 32 | UDDER 1.6  
WW: 850 LBS    TEAT 1.6 | CW 96 | REA .43 | MARB .28 | BMI 526 | CHB 155



Glade Haven  
Herefords



PENN YAN, NEW YORK  
TIM DENNIS: 315-856-0183



MANHATTAN, MONTANA  
DALE & NANCY: 406-284-6421



STANLEY, NEW YORK  
CHRIS BOYCE: 716-818-5464



**MAY/JUNE 2022**

## **YOUR BEEF CHECKOFF**

*Investing in Beef Safety, Nutrition and Promotion.*



**Funded by Beef Farmers & Ranchers**

### **NY Beef Checkoff takes STEM to the Farm**

*“STEM is an acronym for science, technology, engineering, and math”*

**Rome, NY (February 2022)**— Offering educators assets that connect them to real New York farmers was the aim of the New York Beef Council (NYBC), American Farm Bureau Foundation for Agriculture (AFBFA), and New York Agriculture in the Classroom (NYAIRC) partnership. The Next Generation Beef Toolkits have been developed to help teachers, across the US, implement Next Generation Science Standards (NGSS) through an engagement with the beef industry. Each toolkit provides standards-based lessons, background knowledge on core concepts, and real-world on-the-farm phenomenon geared toward middle school and high school students. Upon completion of the toolkit, the curriculum will extend student learning while challenging them to apply their newfound knowledge gained from beef agriculture practices.

The first of three Next Generation Beef Toolkits was recently completed and added to the resources available to educators on the NYAIRC website.



The “Ecosystems and Soil Health Toolkit” offer educators lesson plans and videos for a 3rd-5th grade audience developed by NYAIRC for New York FFA and STEM educators, & can be viewed by using the QR code on the left or visiting: <https://bit.ly/3DpIei6>

New York beef producer and grazing specialist at the Madison County Soil & Water Conservation District, Troy Bishopp, facilitated the videotaping and informational tour that was the catalyst to the development of the lesson plans at his farm in Deansboro, NY. The NGSS tool kit activities and lesson plans, based on those videos, introduced students and teachers to rotational grazing and protein upcycling shot on Troy’s farm, and can be seen here: [https://youtu.be/sYv7PH\\_1198](https://youtu.be/sYv7PH_1198)

NYBC with the help of both the Iowa Beef Industry Council and South Dakota Beef Industry Council hope to bring light to this information in STEM classrooms throughout New York and the US.

### **NY Beef Checkoff Collaborates with NY Apple Association**

*“Sharon Springs Central School District serves up a Beefy Lunch!”*

**Rome, NY (March 2022)**— Throughout March the New York Beef Council (NYBC) co-hosted a weekly commodity collaboration with the New York Apple Association on both of their social media platforms. Videos highlighting the beef and apple recipe pairings were created with the help of NYBC’s very own “Man with a Pan” aka Ryan Gros and Kelly Springer, RD. Each video emphasizes the versatility of both apples and beef. Don’t miss watching these fun, informative videos, every Thursday in March on either New York Beef Councils Facebook or Instagram. The commodity collaboration was made possible through the partnership and was put together using four recipes from <https://www.beefitswhatsfordinner.com>



The four videos can be found on NYBC’s youTube page <https://bit.ly/3DppeAa> or by using the QR code on the left.



### **New York Beef Checkoff Debuts Podcast**

With the popularity of podcasts on the rise, the New York Beef Council created a podcast platform to highlight the unique perspectives of both the farmer and the consumer. Since a podcast can be easily downloaded on apps like Spotify, podcast episodes are a convenient on-the-go option. The monthly podcast will address hot topics and further the NY Beef Councils' mission: To enhance the lives of consumers by connecting them with beef and the beef community. This podcast and future episodes are made possible through the partnership with the Iowa Beef Council. “The NY Beef Banter” podcast can be found by visiting: <https://www.nybeef.org/raising-beef>, by tuning into Spotify or using the QR code on the right.



**NY Beef Banter**







National Cattlemen's Beef Association

# WORKING TO PROTECT YOUR & YOUR RIGHTS & LEGACY

## 2022 Policy Priorities

NCBA's policy focus for 2022 is to protect and promote the economic, environmental, and social sustainability for the U.S. cattle industry.

KEEP US WORKING FOR YOU!

# JOIN TODAY!

[www.NCBA.org](http://www.NCBA.org)

## JOIN NCBA TODAY.

Fill out and mail back this form, call us at 866.233.3872 OR join online at [NCBA.org](http://NCBA.org).

NAME \_\_\_\_\_

BUSINESS/RANCH NAME \_\_\_\_\_

ADDRESS LINE 1 \_\_\_\_\_

ADDRESS LINE 2 \_\_\_\_\_

CITY/STATE/ZIP \_\_\_\_\_

HOME PHONE \_\_\_\_\_

OFFICE PHONE \_\_\_\_\_

EMAIL \_\_\_\_\_

RECRUITED BY \_\_\_\_\_

### NCBA PRODUCER MEMBERSHIP

COW-CALF PRODUCER

HERD SIZE

- 1-100      \$150
- 101-250    \$300
- 251-500    \$450
- 501-750    \$650
- 751-1000   \$900
- 1001-1250   \$1,150
- 1251-1500   \$1,400
- 1501-1750   \$1,650
- 1751-2000   \$1,900
- 2000+

(#hd \_\_\_ x38¢) + \$1,900 =

STOCKER/FEEDER

(#hd \_\_\_ x38¢) + \$150 =

### ASSOCIATE MEMBERSHIP

NON-CATTLE OWNING, NON-VOTING

- Individual    \$150
- Business     \$200
- Student      \$50  
(24 or younger)



Scan QR code to learn more.

**TOTAL AMOUNT PAID**

Sign me up for auto-renewal

### PAYMENT METHOD

Check    Visa    Mastercard    American Express

Card # \_\_\_\_\_

EXP \_\_\_\_\_

CVC \_\_\_\_\_

Signature \_\_\_\_\_

Checks payable to National Cattlemen's Beef Association

# 2022 SUPREME SHOW PROGRAM

Is your 2022 beef show a part of the NYBPA Supreme Beef Female Program?

The 13<sup>th</sup> Supreme Beef Female Program is underway! The program is open to all county fairs and beef shows in New York State. There are two new changes to the program. This year instead of chairs, winning recipients will get a duffel bag and a vest, printed with the sponsor's logo. The duffel bag will be handed out at the respective shows and the vests will be custom-sized and handed out at the Supreme Show at State Fair or around that time. Also, please note this rule change going into effect for this year's program.

- At the time of winning a Supreme Show Chair or honor at a show or fair, if the winning exhibitor is NOT an NYBPA member, they will need to become a member as well as pay a \$50 entry fee in order to show and participate in the NYS Fair Supreme Show.

Official, complete rules can be found on the website at [www.nybpa.org](http://www.nybpa.org). If you would like to be a part of this program, the beef show superintendent or county fair CCE educator will need to request a bag/vest to be a part of the program (this is not done automatically). To get on the program list, email [nybeef@nybpa.org](mailto:nybeef@nybpa.org) or call 716-432-9871. The overall Supreme Show will take place at the NYS Fair on BEEF DAY, Tuesday, August 30<sup>th</sup>.



Thank you to HUBNER SEED and AMERICAN CROP INSURANCE for sponsoring the duffel bags and vests for the Supreme Beef Female Program (see their ads on Page 3)! Thank you to PURINA for sponsoring the Supreme Beef Female Show!!



## Your *Natural* Source for Feed Additives



**SPECIAL BENEFITS FOR NATURALLY GROWN BEEF**

**vistapre<sup>+</sup>**

**agolin<sup>®</sup>**

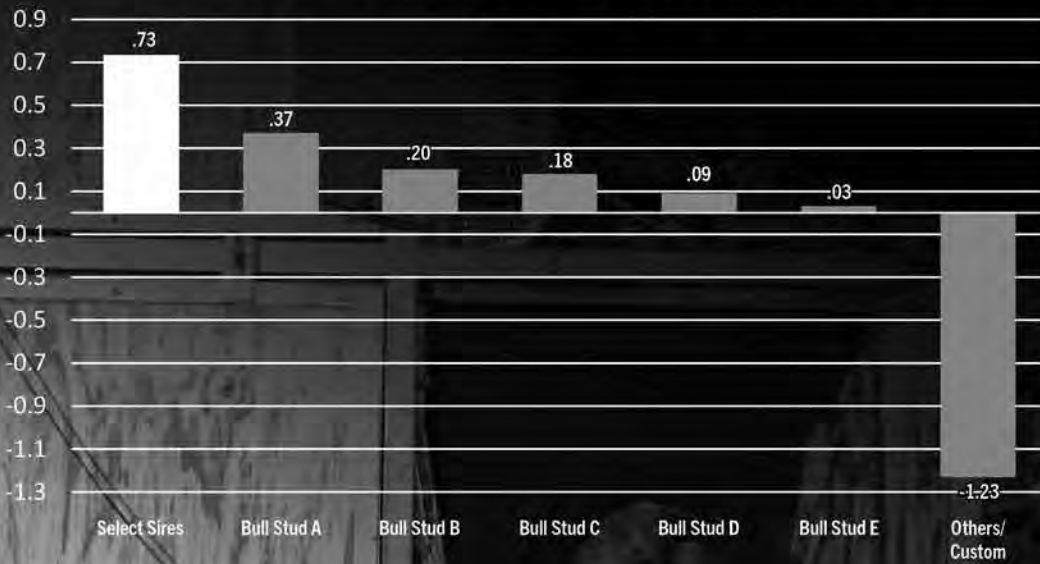


**JOHN M. CLARK, P.A.S. (315) 868-5646**



# SELECT SIRES *DELIVERS MORE* A.I. PREGNANCIES FOR YOU!

A.I. INDUSTRY SIRE CONCEPTION RATE (SCR) DECEMBER 2021



## THE BUSINESS DEMANDS MORE...

**SELECT SIRES** *We Deliver More.*

ASK US HOW WE CAN MAKE YOUR JOB EASIER AND MORE PROFITABLE.



Premier Select Sires  
(800) 227-6417  
www.premierselectsires.com



Jerry Emerich  
Beef Specialist  
(518) 593-0212  
www.selectsiresbeef.com



**What is conflict  
costing you?**

**NYSAMP.COM**

**866.669.7267**

## **ALWAYS HIGH STANDARDS**

- Confidential
- Voluntary
- Timely
- Professional Neutrality
- Low cost or free



## **A VIEW FROM THE TRACTOR SEAT** By Paul Trowbridge

The view from the tractor seat is bright for the first time in a while. Spring is started to spring the maple sap is running and they are making some of the best maple syrup made in America be sure and get some.

We let our chickens out today first time in a while our old girls didn't forget how to dig they had a ball. Now the next thing we need is dandelion flowers for our bees please don't mow your dandelions till they dry up and whatever you do don't spray them and who needs poison on your lawn on your yard and get tracked into your house.

A month ago we had bees out flying and doing a cleansing run it was awesome a bee will never go in its house they need to make that flight 3 to 4 times a winter to discard waste material.

Barnyards are really getting muddy farmer by us call it mud season between winter and really spring we hauled manure out till this week now pile it till real spring comes.

Plants are started trying to get some ready for middle of May been saving our milk jugs cut the bottom out and take the cap off. Make a great protector of a small plant and protects against the wind when I pull them up I take them to recyclable in Batavia. Hoping the garden is great this year all the organic we use maybe I should plant some giant beanpoles might be the right vacation this year for sure.

Thanx For Readn  
Paul

P.S. The closer the hive the sweeter the  
HONEY



# Stabilize Rumen pH, Improve Rumen Function

## LactiproNXT® and LactiproFLX® Uses

- ✓ Shorten the step up to finishing diet
- ✓ Terminal processing
- ✓ Hospital use
- ✓ Receiving cattle
- ✓ Cull cow feeding
- ✓ Crop residue grazing



877-907-5315 · msbiotec.com

PRESENTED BY YOUR ARROWQUIP DEALER, WILLIAMS FENCE CNY

## PORTABLE CHUTE, ALLEY, & TUB LIVE DEMONSTRATIONS

Live demonstrations by appt. only.  
Contact Julie Wratten at 315-841-4910



**October 24, 2020 | 9:30am-1pm**

@ Hoskings Sales Barn 6096 State Route 8, New Berlin, NY 13411

**Nov 7, 2020 | 10am-12pm**

@ Sunnybrook Farm, 2115 Brothertown Road, Deansboro, NY 13328



President- Daisy Trowbridge  
 Vice Pres.- Makayla McLenithan  
 Secretary- Patrick Stark  
 Treasurer- Samantha Basinaït  
 Reporter- Patrick Stark  
 Jr. Advisor - Sara Fessner

## Welcome NYJBPA New Members

- Region 1 - Claire Bliss
- Region 1 - Patrick DiJoseph
- Region 1 - Maci Eley
- Region 1 - Payton & Dakota Ford
- Region 1 - Coldyn & Ashlyn Hackett & Sarah Carter
- Region 1 - Wyatt & Blake Kauffman
- Region 1 - Chloe Landphair
- Region 1 - Allison McNamara
- Region 1 - Karter Mills
- Region 1 - Cody Noel
- Region 1 - Jenna Weixlmann
- Region 3 - Ray Weaver
- Region 3 - Jay, Deacon, Andy, & Teddy Wickham
- Region 9 - Carson, Addison, & Dayton Tucker
- Region 10 - Ella & Sophia Hardy
- Region 11 - Hadlee & Carter Bowker & Madalyn Moody
- Region 12 - Sage & Shelby Schrader

## Junior President's Message

Hello Juniors, in the upcoming month there will be some events going on that you might be interested in. Due May 1st there is a 1000-word essay to win some great items that could benefit you! First place is an AI kit donated by Herm Weber, second and third place winners will be getting a \$100 gift certificate to Select Sires. It is open to all juniors. On May 7th is the Herd Builder Sale in Canandaigua, NY this is where the winner of the AI kit and gift certificates to Select Sires will be announced. The meat raffle winner will also be picked that day. Hope to see you there!



Sincerely Your President,  
 Daisy Trowbridge



PO Box 58  
 Stafford, NY 14143  
**585-343-5449**  
[www.williamkentinc.com](http://www.williamkentinc.com)

## SEMEN SALE REPORT

*By: Patrick Stark, NYJBPA Reporter*

On March 8, with the help of William Kent Inc., online auctions out of Stafford, NY, the New York Junior Beef Producers held a semen sale fundraiser. The juniors are very grateful for all the donations that were made to help make this auction possible. Donations were made by Trowbridge Farms, Prairie View Farm, Pam Armstrong, Select Sires, Hoffman Ranch, Showtime Cattle Company, GKB and Copeland, Walker Polled Hereford Farm, Sara Fessner, Griswold Cattle, Werning Cattle, Abbey Broughton, Conley Cattle, Cates Farms, Competitive Edge Genetics, Trans Ova, Gene Source, and Cattle Visions. Because of their support and those who bid on the lots, the semen auction raised a grand total of \$5,954.00. The funding will be used to support the juniors in educational contests, clinics, and cattle shows throughout the year. Without your support, we would not be able to have programs like this. Thank you to all our buyers for supporting our future leaders in the agricultural industry and to William Kent Inc. for graciously hosting the online auction.

## UPCOMING EVENTS

- May 7th..... Herd Builder Sale, Essay Contest Winner Announced
- August 30th..... Beef Day, NYS Fair
- Sept 24th..... Beef Expo Weekend, Showmanship & Judging
- Sept 25th..... Junior Fall Show @ Beef Expo
- November..... Cobleskill Meat Lab & Repro Education Event



TROWBRIDGEFARMS.COM

**CONTACT**

PHIL & ANNIE TROWBRIDGE  
518.369.6584  
phil@trowbridgefarms.com

PJ & MIRANDA TROWBRIDGE  
518.755.7467  
pj@trowbridgefarms.com



**TROWBRIDGE  
FARMS**

# BULL SALE

22



**MAY 7 • 12 NOON**

**FINGER LAKES  
LIVESTOCK EXCHANGE  
CANANDAIGUA, NY**



**BLACK &  
RED ANGUS  
HEREFORD  
SELL**



**MORE TROWBRIDGE FARMS OFFERINGS IN MAY**



SIRED BY VAR  
POWER PLAY  
AND SG  
SALVATION



**FOUR HEIFERS SELL**

NYBPA HERD BUILDER'S SALE

**MAY 7, 2022 • 1PM**

FINGER LAKES LIVESTOCK EXCHANGE  
CANANDAIGUA, NY

**VERY SELECT GENETICS  
EMBRYOS SELL**

NY ANGUS ASSOCIATION SALE

**MAY 14, 2022 • 1PM**

LOTT FARM / SENECA FALLS, NY

**TWO EXCEPTIONALLY  
BRED HEIFERS SELL**

NY/NEW ENGLAND ANGUS SALE

**MAY 21, 2022 • 1PM**

EMPIRE LIVESTOCK / BATH, NY





# FARM CREDIT EAST

## HOW DOES YOUR **BUSINESS GROW?**



---

**Loans and Leases**

---

**Tax Services**

---

**Payroll Services**

---

**Business Consulting**

---

**Record-keeping**

---

**Country Home Loans**

---

**FarmStart for New Businesses**

---

**Real Estate and  
Equipment Appraisals**

---

**Crop Insurance**

The answer is simple: available credit. Farm Credit East is committed to supporting the agriculture, commercial fishing and forest products businesses that New York's economy depends on. Our lending services will give you the capital you need to grow your business — and that's good for everyone. Contact our lending experts today at the branch closest to you. **Loans for real estate, machinery and equipment, livestock and operating expenses.**

FARMCREDITEAST.COM  
800.562.2235





Daryl Hoover  
315-545-2027

Skip Lear  
315-226-2198

# TWIN CLOVER



## Equipment

Service....Our Priority



SCAN ME

### NEW YORK'S SOURCE FOR BEEF CATTLE HANDLING EQUIPMENT



Calving  
Pens



Basic  
Chutes,  
Squeeze  
Chutes,  
Headgates



Bale  
Feeders



Check Out Our Gates & Corral Panels  
At Finger Lakes Livestock Exchange



Priefert  
Equipment  
& Panels  
In Stock



**STOCKMAN'S CHOICE**

built for your farm  
**marweld**

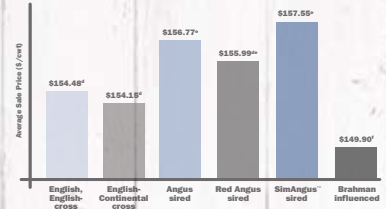
MARTIN'S  
**Feeders & Equipment**

**Priefert®**



# MORE PER HEAD PERIOD

EFFECT OF SIRE BREED ON SALE PRICE OF BEEF STEER CALVES  
Superior Livestock Auction, Summer 2020<sup>a</sup>



SimAngus™-sired steer calves sold through Superior Livestock Auction in summer 2020 earned **more at sale time** than all other calves<sup>b</sup>

It's no wonder the percentage of SimAngus™ calves marketed through the industry's largest video auction has grown **eightfold** since 2010.

Want low-risk, high-potential calves with earning potential?

## STAND STRONG SIMMENTAL

406-587-4531 • simmental.org

<sup>a</sup> For lots of 50 head or more. <sup>b</sup> Kansas State University, December 2020, Superior Livestock Auction data analysis of 3,280 lots, 394,900 head of beef calves marketed during summer 2020. (P<.0001)  
<sup>c</sup> Lots that qualified for breed-related programs were excluded from the model due to potential confounding effects with sire breed analysis and, for many, few lots in the data.  
<sup>d,e,f</sup> Means without a common superscript differ (P<.05). Lots of calves in breed-identified groups were sired by bulls from the respective breeds and out of dams with no Brahman influence.

# New York Simmental Association

[NYSA@NewYorkSimmental.com](mailto:NYSA@NewYorkSimmental.com) [www.NewYorkSimmental.com](http://www.NewYorkSimmental.com)

### OFFICERS:

- President: Darryl Bunal, Rome – 315-338-9033
- Vice-Pres: Jeremy Bear, Greenville - 518-929-0677
- Secretary: Jeanne White, Groton – 607-423-4888
- Treasurer: Shawn Murphy, Eagle Bridge – 518-686-4180

### Upcoming Calendar of Events:

- April 29 - NYJ Cattle Battle, Dutchess County
- May 7 - Stars & Stripes Sale, Hershey, PA
- July? TBA - Summer Picnic Meeting at Tuckaway Farm, Bryan & Sarah Stocks





# PROGRESSIVE CATTLEMEN

CHOOSE VITAFERM® CONCEPT•AID®

VitaFerm  
**Concept•Aid®**



VitaFerm Concept•Aid is a line of vitamin and mineral supplements for beef cattle formulated to promote effective, easy breeding when fed 60 days pre-calving through 60 days post-breeding. High concentrations of vitamin E and organic trace minerals, coupled with the Amaferm® advantage, supports quick repair of the reproductive tract and more energy for reproductive success.

For more information, contact Jack Oattes BioZyme® Area Sales Manager at (613) 633-7969 or visit [www.vitaferm.com](http://www.vitaferm.com) to find a dealer near you.

**VITAFERM** PERFORMANCE THAT PAYS

**BIOZYME**  
INCORPORATED

# New York Hereford Breeders Membership Application

Name \_\_\_\_\_ Farm Name \_\_\_\_\_  
Address \_\_\_\_\_ City \_\_\_\_\_ State \_\_\_\_\_ Zip \_\_\_\_\_  
County \_\_\_\_\_ Phone \_\_\_\_\_ E-Mail \_\_\_\_\_

**Membership: \$50.00 (2 Years)- Make checks payable to NYHBA and mail to:  
Brenda Dermody, 2405 Limerick Road, Linwood, New York 14486**

Glade Haven Herefords  
Tim Dennis  
3550 Old County Road  
Penn Yan, NY 14527  
315-536-2769  
tdennis@trilata.com

Mayer Cattle Farm  
John Mayer  
8004 Meacham Hill Road  
Salamanca, NY 14779  
716-984-9593  
jmayer@mayerbrothers.com

Rambling M Farm  
Bill & Chris Metch  
3208 State Hwy. 206  
Bainbridge, NY 13733  
607-967-3020  
wmetch@stny.rr.com

SK Herefords, LLC  
Schubel, Keppler, Welker  
11021 Ryan Road  
Medina, NY 14103  
585-798-4088  
skherefordscattle@gmail.com

JKW Polled Herefords  
John & Kathi Wagner  
83 Howard Hall Road  
Catskill, NY 12414  
518-945-2638 or 518-469-3777  
jkwpolledherefords@gmail.com

Updyke's Flagmarsh Ranch  
Grady & Darlene Updyke  
51 Updyke Road  
Waverly, NY 14892  
607-565-7357  
flagmarshranch@stny.rr.com

Spring Pond Farm  
John & Anita Kriese  
4385 Italy Hill Road  
Branchport, NY 14418  
315-856-0234  
hereford@frontiernet.net

Your Hereford Farm  
Could be Here  
Contact:  
Brenda Dermody  
585-233-0634  
NYHB Treasurer





## ANGUS CATTLE

### AT EASE ACRES REGISTERED ANGUS



BREEDING & SHOW STOCK  
WHOLESALER OF ALL NATURAL, PASTURE RAISED BEEF

Derrick & Nicole DeBoer  
253 Line Rd, Berne NY 12023  
607.280.8111/518.526.6623

www.AtEaseAcres.com  
AtEaseAcres@gmail.com

## BEEFMASTER CATTLE

### LETENDRE FARMS

391 Allen Road  
Richfield Springs, NY 13439  
Phone: 315-717-1037  
Email: letendrefarmny@yahoo.com

**BEEFMASTER**  **Beefmaster Cattle**  
BREEDERS UNITED

**REGISTERED - NATURALLY RAISED**

## HEREFORD CATTLE

### Charlesworth Family Farm

Registered & Commercial  
Black Angus Cattle



John R. Charlesworth  
8984 New Albion Rd.  
Little Valley, NY 14755  
716-938-6676

### JKW Polled Herefords



John and Kathi Wagner  
83 Howard Hall Rd  
Catskill, NY 12414

(518) 469-3777 - cell  
(518) 945-2638 - home  
jkwagner@mhccable.com

www.jkwpolledherefords.com

### Murphy Farm Registered Black Angus



Peter Murphy  
1132 Rt. 80  
Tully, NY. 13159

Home: 315-696-6092

Cell: 315-706-1693

## ROOFING/SIDING

### Metal Roofing & Siding

cut to your length within 24 hours  
painted, galvalume, galvanized, aluminum  
18 colors in stock, #1 & #2

- ✓ trim & accessories
- ✓ windows & doors
- ✓ sliding door track
- ✓ poly/glass board

### E.B.Martin Roofing Supply

2845 Rte 364  
Penn Yan NY 14527  
315-536-0944

## Yankee Beef



NORTH JAVA, NY


www.yankeebeef.com  
716-479-0321 Erica


FREEZER BEEF  
REGISTERED BLACK ANGUS  
SOON: SHOW CALVES

**RED ANGUS CATTLE**

**ERWINDALE FARMS**  
**Red Angus**  
 Ellen TenEyck  
 Jason TenEyck, Kendra Lotz, Karla & Jayce  
 1908 County House Road  
 Waterloo, NY 13165  
 315-246-1359/315-246-1394  
[erwindalefarms@yahoo.com](mailto:erwindalefarms@yahoo.com)  
 Visitors Welcome **Only 6 miles South of I-90 exit 41**


  
**BRACKEL RIDGE**  
 CATTLE COMPANY  
 5887 ST. RT. 23, CINCINNATUS, NY 13040  
**REGISTERED RED ANGUS**  
**SEEDSTOCK - BULLS - HAY - STRAW**  
 JAKE CHRISTY 607-342-0880  
 JOSH CHRISTY 607-345-1178  
 DAVE CHRISTY 607-423-2366  
[sales@uniformpro.com](mailto:sales@uniformpro.com)  
[www.brackelridgecattleco.com](http://www.brackelridgecattleco.com)

**MONTROSS BEEF CATTLE**  
 Reg. Red Angus & Herefords  
 Feeders/Freezer Trade  
  
**Dennis and Linda Montross & Family**  
 9971 Dietzel Rd. Weedsport, NY 13166  
 Chris: 315-406-2042  
 Dennis: 315-730-5034  
[lamontross2002@yahoo.com](mailto:lamontross2002@yahoo.com)

**Elm Side Farm**  
**Registered Simmental Cattle**  
**Also Registered SimAngus Genetics**  
  
 Show Calves and Breeding Stock for Sale  
 Cattle for the small Breeder, calm dispositions.  
 Visitors are always welcome  
 Call for directions  
**THE REYNOLDS FAMILY**  
**Art, Barb, Roger and Darby**  
 836 Little Dryden Rd, Walton, N.Y. 13856  
 Barn: 607-865-6888 Cell: 607-434-3058  
[elmsidefarm@frontiernet.net](mailto:elmsidefarm@frontiernet.net)

  
**Richard & Michelle Phillips**  
 Registered Red Angus  
 Bulls, Cows & Heifers  
 for sale  
 3974 Franklin St. Rd. Auburn, NY 13021  
 315-255-1808  
[www.waywardwindranch.com](http://www.waywardwindranch.com)  
[waywardwindranch@hotmail.com](mailto:waywardwindranch@hotmail.com)

  
**Hillview Farm**  
  
**Registered Cows & Heifers For Sale**  
 Allan Maxian | 7415 Route 80 | Fabius, NY 13063 | (315) 882-1718  
[allanmaxian.la@gmail.com](mailto:allanmaxian.la@gmail.com)

**THORPE**  
 USDA ALL-NATURAL BEEF PORK  
 Retail / Wholesale  
  
 NYS AWARD-WINNING QUALITY HAY  
 Retail / Wholesale  
**Farms**  
 SIM-ANGUS CATTLE  
 2021 ROUTE 11  
 LAFAYETTE, NY 13084  
**Shelley Thorpe 315-677-3342 Tim Thorpe**  
[www.ThorpeFarms.com](http://www.ThorpeFarms.com)



**SIMMENTAL CATTLE**

**Registered Simm-Angus x Wagyu**



*bred for:*  
**durability & feed efficiency**

*Choose Wagyu for Improved*

- marbling
- beef quality
- fat profile

**802-376-6729 ~ Mary Beth**

- Vaccinated
- High Tenderness
- SCD-AA Verified

**F1-Fullblood Wagyu Available**

\*SCD-AA fat profile has been found to indicate low melting point (healthier) fats

**James D. Frueh ~ (518) 436 1050**

SGF BC Lookout 7024 313R  
SCD-AA 9



**Registered Angus  
1-3 year old Bulls  
Bred & Open Heifers  
Bred Cows  
Cow Calf pairs  
Feeder Calves  
High Tenderness  
SCD-AA Verified  
Vaccinated**

*Stoffels Glenview Farm*



**Rugenstein  
FAMILY FARM**

Randy & Karen Rugenstein  
Becky & Tom Snyder  
Amy & Mike Pyra


585-398-2273  
585-746-5039  
RFFarm@hotmail.com

1848 Risser Rd  
Canandaigua, NY

**Raising Simmental Cattle With Proven Genetics**


**SHOW SUPPLIES**

**HIGHLAND**



**LIVESTOCK SUPPLY, LTD**

**The Best In Livestock Supplies & Equipment  
From Brands You Know & Trust**



Allflex Identification  
Andis Clippers  
Apache Creep Feeders  
Easy Way Fly Stations  
Ritchie Fountains  
Smidley Steer Stuffers  
Speedrite Fence Energizers  
Stronghold Equipment  
Sullivan Supplies  
Titan West Equipment  
Tru-Test Scales

**330-457-2033**

PO Box 190 - New Waterford, OH 44445  
**WWW.HIGHLANDLIVESTOCKSUPPLY.COM**

**LIMOUSIN CATTLE**

*"The Legacy Continues"*

**LENAPE  
LIMOUSIN**

RAY & BARB MOYER  
REGISTERED FULLBLOOD  
LIMOUSIN

**Phone: 267-718-0574**  
lenapelimousin@gmail.com  
41 Fretz Rd., Telford, PA 18969  
www.lenapelimousin.com

**Support "Your" Association**  
Your Farm or Business could be listed here.  
It's only \$120.00 A YEAR!!!  
Send Business card to nybeef@nybpa.org



# Classifieds



**Show Supplies For Sale:** Aluminum show box, like new; blow dryer, like new; 4 leather halters, brushes and various other show supplies, asking \$1000. Steel Zimmerman grooming chute, \$500; set of show stall dividers, \$400. Please call 610-390-3506 or email [cinncow876@gmail.com](mailto:cinncow876@gmail.com)

**Red Angus Bulls For Sale:** Sharp, very well mannered, vaccinated, tested, and calving ease bulls. Contact Wayward Wind Ranch 315-567-6432 or 315-255-1808

**Bulls For Sale:** Lim-Flex Bulls, yearlings, black, double polled for sale - CALL Drew 585-831-6699 Locust Lane Limousin - Perry

**For Sale:** Reg. performance-bred Black Angus yearling bulls. "AI" sired by Stunner, Home-grown and Tombstone 050. Their dams and maternal granddams are also "AI" sired. Breeders of Reg. Black Angus for over 40 years, our closed herd is NYSCHAP certified, Johne's free at the highest rating of 6+. Call for information. Hauman Angus (315) 536-8154

**Herd For Sale:** Commercial Angus/Hereford herd: 12 cows (5-9 year olds, 6-2 year olds, 1- 4 year old) and 1- 5.5 year old Akaushi Bull (Red Wagyu). Bull is 100% DNA certified and Registered with American Akaushi Association. Cows not pregnant checked but should be bred for late summer calves. Asking \$14,000. Luke Beadnell 518-260-4048 [Beadnell21@yahoo.com](mailto:Beadnell21@yahoo.com)

**Bulls For Sale:** 2 Registered Red Angus bulls, MRLA Resource 137E sons. 15-16 months old. Vaccinated, BVD and BSE tested. Trucking available. (607)345-0880

**Bull Calf For Sale:** Hidden Canyon Farm, Lyons, NY has the following bull calf for sale: Registered Angus bull calf, born May 5, 2021. Sire Genex Full Power and Dam Final Answer II daughter. Registration number: AA20106964. He has good feet and legs. Reasonably priced. Call/text 315-871-9993 (Sue) or 315-871-9994 (Steve) for more information or questions.

**Classified Ads are FREE to any NYBPA Members.**

**Send information to [nybeef@nybpa.org](mailto:nybeef@nybpa.org)**

**Classified Ads also appear on the website at [www.nybpa.org](http://www.nybpa.org).**

**COCHECTON MILLS**  
INC.

*"Supreme Quality Feeds"*

Custom Feeds • Fertilizers • Farm Supplies

Bulk and Bagged Feed Deliveries

30 Depot Rd., Cochection, NY 12726

(845)932-8282

[www.cochectonmills.com](http://www.cochectonmills.com)

**J.F. ZUILL**  
**Agricultural Enterprises**

Livestock Transport- BQA Certified- Local & Long Distance

Clean Safe Equipment- Experienced- Fully Insured

Hay Straw- Mulch- Equipment Sales- Flatbed Service

Cell- 607-316-0258

Phone-607-895-6478

Bainbridge, New York



**Cooperia** (shown here) is one of the most prevalent internal parasites in U.S. cattle herds. And infected calves experience 7.4% less average daily gain.<sup>1</sup>



# DON'T LET MONSTROUS PARASITES BITE YOUR BOTTOM LINE

Choose **SAFE-GUARD®** (fenbendazole) when you deworm to take out more profit-eating parasites.

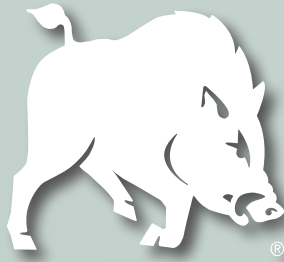
SAFE-GUARD is shown to kill 98.7% of worms, remaining powerful and effective, even in the face of ivermectin resistance. Ivermectin on the other hand, is only 45.9% effective.<sup>1</sup> That's a lot of worms left behind to feast. Talk to your veterinarian about switching from ivermectin (or any other -ectin dewormer) to SAFE-GUARD – the right choice for your cattle and ROI.

**BITE BACK AT [KILLMOREWORMS.COM](http://KILLMOREWORMS.COM)**

**IMPORTANT SAFETY INFORMATION:** Do not use in beef calves less than 2 months old, dairy calves and veal calves. A withdrawal period has not been established for this product in pre-ruminating calves. Additionally, the following meat withdrawal and milk discard times apply: SAFE-GUARD Paste: Cattle must not be slaughtered for 8 days. For dairy cattle, the milk discard time is 96 hours. SAFE-GUARD Suspension: Cattle must not be slaughtered for 8 days. For dairy cattle, the milk discard time is 48 hours. SAFE-GUARD En-PRO-AL Type C Medicated Block: Cattle must not be slaughtered for 11 days. For use in beef cattle only. SAFE-GUARD 20% Protein Type C Medicated Block: Cattle must not be slaughtered for 16 days. For use in beef cattle only. SAFE-GUARD Type A and other medicated feed products (pellets, cubes, free-choice mineral, or free-choice liquid): Cattle must not be slaughtered for 13 days. For dairy cattle, the milk discard time is 60 hours.

<sup>1</sup>Stromberg BE, et al. *Cooperia punctata*: Effect on cattle productivity. *Vet Parasitol.* 2012;183(3-4):284-291.





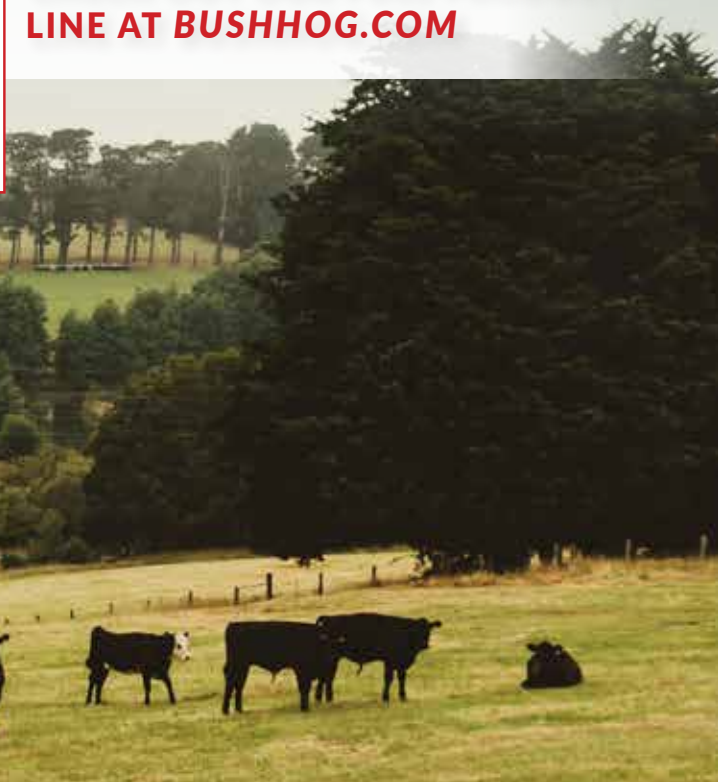
**IF IT DOESN'T SAY  
BUSH HOG®  
IT JUST WON'T CUT IT™**

**TRANSFORM YOUR PROPERTY INTO A LAND OF OPPORTUNITY**

**OUR FLEX-WING ROTARY CUTTERS ARE PERFECT FOR  
MAINTAINING A ROLLING PASTURE OR ORCHARD, OR CLEARING HEAVY CROPS.**



**CHECK OUT OUR FULL PRODUCT  
LINE AT [BUSHHOG.COM](http://BUSHHOG.COM)**



**ASK ABOUT ADDITIONAL  
DISCOUNTS AVAILABLE  
TO MEMBERS OF NEW YORK  
BEEF PRODUCERS  
ASSOCIATION.**

**ROTARY CUTTERS FROM 4'-20'  
HAY TOOLS  
LANDSCAPE, TILLAGE, LAND MAINTENANCE  
& MATERIAL HANDLING EQUIPMENT  
AND SO MUCH MORE!**

**CONTACT US FOR MORE INFORMATION :**

 2501 GRIFFIN AVE. SELMA, ALABAMA 36703  800.363.6069  [BUSHHOG.COM](http://BUSHHOG.COM)

