

NEW YORK *Beef Producer*



September / October 2022

Volume 38 - No.5

Official Publication of New York Beef Producers' Association
and New York Junior Beef Producer's Association



PRESORT STD
U.S. POSTAGE
PAID
EAST AURORA, NY
PERMIT NO. 27

NYBPA
10040 Hooker Hill Rd.
Perrysburg, NY 14129

Cooperia (shown here) is one of the most prevalent internal parasites in U.S. cattle herds. And infected calves experience 7.4% less average daily gain.¹



DON'T LET MONSTROUS PARASITES BITE YOUR BOTTOM LINE

Choose **SAFE-GUARD®** (fenbendazole) when you deworm to take out more profit-eating parasites.

SAFE-GUARD is shown to kill 98.7% of worms, remaining powerful and effective, even in the face of avermectin resistance. Ivermectin on the other hand, is only 45.9% effective.¹ That's a lot of worms left behind to feast. Talk to your veterinarian about switching from ivermectin (or any other -ectin dewormer) to SAFE-GUARD – the right choice for your cattle and ROI.

BITE BACK AT KILLMOREWORMS.COM

IMPORTANT SAFETY INFORMATION: Do not use in beef calves less than 2 months old, dairy calves and veal calves. A withdrawal period has not been established for this product in pre-ruminating calves. Additionally, the following meat withdrawal and milk discard times apply: SAFE-GUARD Paste: Cattle must not be slaughtered for 8 days. For dairy cattle, the milk discard time is 96 hours. SAFE-GUARD Suspension: Cattle must not be slaughtered for 8 days. For dairy cattle, the milk discard time is 48 hours. SAFE-GUARD En-PRO-AL Type C Medicated Block: Cattle must not be slaughtered for 11 days. For use in beef cattle only. SAFE-GUARD 20% Protein Type C Medicated Block: Cattle must not be slaughtered for 16 days. For use in beef cattle only. SAFE-GUARD Type A and other medicated feed products (pellets, cubes, free-choice mineral, or free-choice liquid): Cattle must not be slaughtered for 13 days. For dairy cattle, the milk discard time is 60 hours.

¹Stromberg BE, et al. *Cooperia punctata*: Effect on cattle productivity. *Vet Parasitol.* 2012;183(3-4):284-291.

MAHCattle.com • 800-521-5767

© 2022 Merck & Co., Inc., Rahway, NJ, USA and its affiliates. All rights reserved. US-SFG-200400001



 **MERCK**
Animal Health

INSIDE THIS ISSUE

Directory Corrections.....pg. 3
 President Message.....pg. 4
 New Members.....pg. 4
 Beef Producers Bulletin.....pg. 5
 BQA Info.....pg. 9
 Bloat - A True Emergency.....pg. 11-12
 News from NYBC.....pg. 13
 Forage Calculator Tool.....pg. 15
 Beef Expo Info.....pg. 17 & 23
 Equipment for Sale.....pg. 22
 Supreme Show Program.....pg. 24 - 27
 Junior Happenings.....pg. 28
 View from Tractor Seat.....pg. 30
 Classified Ads.....pg. 36

UPCOMING EVENTS

September

- Sept 10 - Entry Deadline for Jr. Beef Expo Show
- Sept 24 - Beef Expo, Seneca Falls
- Sept 24 - Council Meeting @ Beef Expo
- Sept 25 - Jr Beef Expo Show

October

- BQA Month** - check out the trainings on page 9
- Oct 29 - Council Meeting, R Lott & Sons Farm

November

- TBA - Jr Meat & Repro Educational Clinic @ SUNY Cobleskill

December

- Dec 15 - Deadline to remit checkoff for direct marketers
- Dec 31 - Deadline for Jr Incentive Points



For more events check out our web site -
www.nybpa.org
Facebook -
www.facebook.com/nybeefproducers

The NEW YORK BEEF PRODUCER

is published bimonthly by the
 New York Beef Producers' Association.

January/February March/April May/June
 July/August Sept/October Nov/December

Advertising Rates

Full Page Color	\$225.00
Full Page (b/w)	\$125.00
1/2 Page (b/w)	\$85.00
1/4 Page (b/w)	\$55.00
Business Card (b/w)	\$25.00

Classified Ads free to paid NYBPA Members

5% discount for payment with copy

10% discount for 6 consecutive ads

5% discount NYBPA Member discount

8 1/2" x 11" Magazine format

Deadline for next issue is OCTOBER 1st.

This will be firm so newsletter gets out on time.

For more information contact:

nybeef@nybpa.org

Visit our web site www.nybpa.org

KENT

QUALITY YEAR-ROUND MINERAL NUTRITION

FRAMEWORK 365 MINERAL

- Framework 365 Mineral Performance ADE Availa 4
- Framework 365 Mineral Performance MG
- Framework 365 Mineral ADE Sure-Footed
- Framework 365 Mineral Full Flush Availa 4
- Framework 365 Mineral ET Elite ProPath 4
- Framework 365 Mineral Grass-Fed Beef

Built on Trust
EST. 1927

Bryan Beaver 609.760.9303 bryan.beaver@kentww.com
 Mackenzie Chauncey 518.369.0969 mackenzie.chauncey@kentww.com
 Courtney Furst 315.436.0633 courtney.furst@kentww.com

kentfeeds.com

EXECUTIVE COUNCIL

President:

Ted Card, Jamestown, 716-664-0356

Vice President:

Skip Lear, Albion, 585-730-9383

Secretary:

Sara Fessner, Bloomfield, 585-752-1213

Treasurer:

Brenda Dermody, Linwood, 585-233-0634

Past President:

Phil Trowbridge, Ghent, 518-369-6584

Cornell Advisor:

Ashley McFarland, Herkimer, 315-604-2156

Executive Secretary:

Amanda Dackowsky, Perrysburg, 716-432-9871

REGIONAL DIRECTORS

Region 1- Tyler Strub, Andy Beach, Alana Welker

**Region 2- Ted Card, Amanda Dackowsky,
Sherry Charlesworth**

**Region 3- Allison Thomas, Amanda Schwartz,
Karen Clark**

Region 4- Barb Benjamin, Jill Harmon

Region 5- Tim Pallokat, Clint Sampson, Donna Stone

**Region 6- Ben Brooks, Brandon Riehlman,
Glenn Forshee, Marissa Phelps**

**Region 7- Dean Wheeler, Larry Larabee,
Mellissa Spence**

**Region 8/9- Craig Southworth, Joe Eisele,
Betsy Hodge**

Region 10- Sarah Hardy, Amanda Larrabee

**Region 11- Dirk Schubert, Nanette LaTourette,
JoAnne King**

**Region 12- Kevin Jablonski, Shawn Murphy,
Erin Perkins**

**Region 13- Rich Blazeski, Ed Moran,
Mackenzie Chauncey**

Region 14- currently vacant

NY BEEF COUNCIL

Executive Director:

Jean O'Toole, Westmoreland, 315-796-7907

NYBPA Representatives

Jennifer Hammond, Bath, 607-346-5492

Peter Lehning, Honeoye Falls, 253-961-3743

NY JUNIOR BEEF ASSOCIATION

President/NYBPA Rep- Daisy Trowbridge

Vice President- Makayla McLenithan

Secretary/Reporter- Patrick Stark

Treasurer- Samantha Basinait

Jr. Advisor - Sara Fessner

NYBPA OFFICE

10040 Hooker Hill Road Perrysburg, NY 14129

Phone: 716-432-9871

Email: nybeef@nybpa.org

Web site: www.nybpa.org

Allied Sponsors

Platinum Level

Bush Hog Inc.

Merck Animal Health

Zoetis

Gold Level

Farm Credit East

NY Simmental Association

Silver Level

Finger Lakes Cattle Company

NY Beef Council

Thunder View Farms

Twin Clover Equipment

Bronze Level

NYSAMP

Select Sires

Feedworks USA

Multimin USA

Williams Fence Supplies

Additional Sponsors

Photo Contest Sponsor

Kent Nutrition Group

Supreme Beef Female Program

State Fair Supreme Show

Purina Animal Health

County Supreme Duffel Bags & Vests

Hubner Seed

American Crop Insurance

**THANK YOU
TO ALL OUR SPONSORS**

2021/2022 Directory Corrections

The following are corrections to the directory:

- Region 4 Co-Chairman (pg.7) – Janeen Sparks
- Lisa Sklener, D & L Farm (pg. 66) – farm description should read, “Registered and Commercial Charolais operation. Selling Bulls, Heifers, and Freezer Beef. Exit 61 off Route I-86. North on Route 34 approx. 8 miles. Turn right on Dean Creek Road. Farm 1.8 miles on right.”
- Addition to Genesee County (pg 34): Amy Mathisen, Mills Crest Acres
5939 Griswold Rd. Byron, NY 14422 | 585-409-3000 | mathisenamy@gmail.com
- Correct address for: Dennis Phelps, Wayne E. Phelps Enterprises Inc. (pg.34)
1862 Ledge Road Basom, NY 14013
- Junior Members (pg.11) - Autumn Mathisen
- Erwindale Farms Ad/TenEyck Family (pg. 84) - the correct ad is listed on Pg. 34 of this newsletter
- Charlesworth Family Farm ad (pg.74) – the correct ad is listed on Pg. 33 of this newsletter.

COVER PHOTO

*Congratulations
Eric Bond!*



Eric took the cover photo of this newsletter. Eric, Bailey, and JJ (pictured) operate Big Apple Cattle Co. They focus on producing Angus, Charolais, Maine Anjou, and Simmental breeding stock and show steers.



**NEW
EMAIL!!**

NYBPA has a new EMAIL address.
Please update your records and use:

nybeef@nybpa.org

NYBPA President Message



This year has been tough on a lot of farmers. Not only has the economy increased prices on feed, fertilizer and crop seeds, mother nature has been extremely selfish with rain.

As you endure your struggles, remember you're not alone. In these trying times reach out to another farmer and offer help if you can. However difficult the times are, future market prices remain promising. People are looking for the home grown, backyard beef. They are realizing farm to table is the way to go. Producing good quality beef will bring a smile to your face and the face of your consumer.

As you read through this month's publication, take note of all new programs and opportunities available for you. We look forward to making the Beef Expo a family event. If you are looking for new marketing opportunities for your farm, be sure to apply for the NYS Beef Farm Of Excellence Award.

Thank you to all those who continue to give your time to NYBPA. I guess when God needed Folks to care for His earth He chose "Just Farmers" 'Cause He knew their true worth.

~ Ted

2022 NEW MEMBERS - Welcome!

- 1- Thomas Stirk | Windy Pines Farm | 14075 W. Bacon Road Albion, NY 14411 | 585-729-7816
- 2 - Katie & Reed Mitrowski | Mitrowski House Farm | 4092 Route 242 Machias, NY 14101 | 315-256-2482
- 6 - John & Jacquelyn Chotkowski | Spring Flight Farm | 321 Charles Storch Rd, Elmira, NY 14903 | 607-731-3487
- 7 - Dale Brown | Jasdale Farm LLC | 5463 State Route 26 Turin, NY 13473 | 315-778-3023
- 7 - Joe Lawler | Black Post Ranch | 35619 N. Lake Road Carthage, NY 13619 | 315-771-7222
- 7 - Dean Yancey | Agrotecy | 7692 Lampher Street Lowville, NY 13367 | 315-376-4713
- 10 - Josh & Andrea Ostrander | Ostrander Acres | 1104 Brand Road Sprakers, NY 12166 | 518-588-0249
- 10 - Roxy Ouderkirk | Ouderkirk Farms | 481 Stone Arabia Road Fort Plain, NY 13339 | 315-292-2853
- 12 - Nicole Fioretti | The 100 Acre Farm | 3784 State Route 149 Fort Ann, NY 12827 | 518-321-5901
- 12 - Paul Geurtze | Fern Ridge Farm | 1569 County Route 51 Hannacroix, NY 12087 | 518-763-5620

**a former junior member who has joined the adult association*

~The number before name indicates which region new member joined

Referring New Members is Rewarded in our Membership Incentive Program

- 1 member - \$10 toward NYBPA merchandise or advertising.
- 2 members - \$20 toward NYBPA merchandise or advertising.
- 3 members - \$30 toward NYBPA merchandise or advertising.
- 4 members - \$40 toward NYBPA merchandise or advertising.
- 5 members - 2 registrations to NYBPA Annual Conference
or \$60 in NYBPA merchandise or advertising.

Each new member over 5- Adds \$10 in NYBPA merchandise, advertising or applied to Annual Conference Weekend Registration/Meals in January.

10 members- 1 free Hotel Night at the Annual Conference

Mix and Match your awards after 10 new members.

2022 Member Rewards Program winners will be announced at the 2023 Annual Conference.

The Beef Producers Bulletin

FOR SALE: NYBPA is selling some equipment that is no longer used. We want to offer these items to members first. Check out pictures, descriptions, and bidding details on page 22.

Regional News: Are you doing something cool in your region? Having an event or meeting? Let Amanda Dackowsky know, and she can help promote your event to the membership. Email information to nybeef@nybpa.org. Check out the website for up-to-date regional meetings and events - www.nybpa.org

****WARNING****

It's a directory year coming up! Don't miss out – make sure you renew your NYBPA dues by Jan. 31st. Here's why you want to be in the NYBPA directory:

- All paid members listed by county
- Alphabetical listing by last name in back
- Given out to all members
- Handed out at producer and public events like NY Farm Show, Empire Farm Days, county fairs, and NYS Fair
- Great, cost-effective marketing tool- the directory is used when people are looking for certain breeds of cattle to buy or meat directly from producers
- Posted on the website for viewers to see ANY TIME

Watch for membership renewals to come out in December. Be sure to update contact info and farm descriptions.

SAVE THE DATE

2023 NYBPA Annual Meeting & Conference

Date: January 20-21st

Location: Ramada, 441 Electronics Parkway, Liverpool

Speaker schedule and conference details TBA soon...

Upcoming Sales

September 10th – Feeder Calf Sale @ Finger Lakes Livestock Exchange

September 17th – Trowbridge Family Affair Female Production Sale, Ghent, NY

September 24th - Feeder Calf Sale @ Finger Lakes Livestock Exchange

October 8th - Feeder Calf Sale @ Finger Lakes Livestock Exchange

October 22nd – Tullyfergus Angus Fall Sale, Lyons, NY

October 22nd - Feeder Calf Sale @ Finger Lakes Livestock Exchange

October 28th & 29th – Yon Family Farms Fall Female & Bull Sale, Ridge Spring, SC

November 5th - Feeder Calf Sale @ Finger Lakes Livestock Exchange

Next NYBPA Council Meetings

Saturday, Sept 24th (following Beef Expo), R Lott and Sons Farms, Seneca Falls

Saturday, Oct 29th, R Lott & Sons Farms, Seneca Falls

one director from each region should plan to attend



**TROWBRIDGE
FARMS**



SELLING DAUGHTER of
Frosty Elba Lizzy 564 (top),
Sired by WOODHILL Blueprint.
Full sister Trowbridge Elba 154
shown (bottom)

FEMALE
PRODUCTION
A FAMILY AFFAIR
SALE



SEPT. 17, 2022 • 11AM
TROWBRIDGE FARMS • GHENT, NY

PLUS Cheer-Up Angus Dispersal
by John Iovieno

**PLUS 30 LIVE
HEREFORD LOTS**

**Northeast
Elite**
HEREFORD SALE



WWW.TROWBRIDGEFARMS.COM

518.369.6584 / PHIL & ANNIE TROWBRIDGE / phil@trowbridgefarms.com
518.755.7467 / PJ & MIRANDA TROWBRIDGE / pj@trowbridgefarms.com

SELLING DAUGHTER
of JKW 719T 1406 MISSY
1602 (above),
Sired by Boyd Power Surge



NEW YORK ANGUS ASSOCIATION

WWW.NY-ANGUS.COM



Join us!

Stay up to date with all things NY Angus by visiting our website or find us on Facebook.

Save the
date
for our

FALL SALE

SATURDAY, OCTOBER 22, 2022 | NOON

Offering: FEEDER CALVES
SELECT FEMALE LOTS
FUTURE HERD SIRES
GUEST CONSIGNORS

Location: 8974 LYONS MARENGO RD
LYONS, NY 14489

TULLYFERGUS
ANGUS

Robert Groom at (315) 573-2569 | rgroom67@gmail.com
8974 Lyons Marengo Road | Lyons, NY 14489

BQA INFO



October is BQA Month!!

Chrissy Claudio & Nancy Glazier
NY Beef Quality Assurance
Co-Coordinators

Why get BQA certified? It's the right thing to do. It helps document the country's safe, wholesome, and secure beef supply. Over 85% of the nation's beef is BQA certified, which help bring up the numbers in NYS. Back by popular demand, we are bringing back October as Beef Quality Assurance month. Covid impacted many trainings, so we are working to make up lost opportunities.

Below is the list of upcoming trainings. Please reach out to the contact person listed as dates and times were set up well in advance and may change. Check out the current listing at:

<https://www.nybeef.org/farmers-fencepost/beef-quality-assurance-certification/upcoming-bqa-events>.

Upcoming Trainings:

Date: Saturday, September 3rd, Chuteside Training

Location: Pebble Mountain Beef, 206 Sand St., Constable, NY 12926

Contact: Justin Tucker, 518-483-7403 or jwt93@cornell.edu

Date: Saturday, September 24th – BQA Training at the Beef Expo @ 9:30 am- Noon

Location: Rodman Lott & Son Farms, 2975 Route 414, Seneca Falls, NY

Contact: Amanda Dackowsky, NYBPA secretary, 716-432-9871, nybeef@nybpa.org

Date: Saturday, October 8th @ 10 am– 2 pm

Location: HLW Acres, 1727 Exchange St. Rd., Attica, NY; Wyoming and surrounding counties.

Cost: \$5 per farm. Lunch provided by the farm

Contact: Nancy Glazier, CCE NWNYS Team, call or text, 585-315-7746, nig3@cornell.edu by October 6

Date: Saturday, October 15th @ 11:00 am

Location: Bardwell Farms located, 10273 Black Hollow Rd. Remsen, NY, Oneida and surrounding counties

Cost: \$5 per farm

Contact: Marylynn Collins, CCE Oneida, text: 315.368.8603, mrm7@cornell.edu

Please include name and cell phone number in RSVP and number wishing to attend

Date: Thursday, October 20 from 6-8:30PM

Location: TBA, Allegany and surrounding counties

Contact: Lynn Bliven, CCE Allegany, lao3@cornell.edu

Tentative Trainings

Date: Sometime in the last two weeks of October

Location: Auburn area, Cayuga and surrounding counties

Contact: Ron Kuck, CCE Cayuga, 315-704-8810 or rak76@cornell.edu

Date: October 2022

Location: Cattaraugus/Chautauqua County Region

Contact: Amy Barkley, CCE SWNY Program, 716-640-0844, amb544@cornell.edu



National Cattlemen's
Beef Association

WORKING TO PROTECT YOUR & YOUR RIGHTS & LEGACY

2022 Policy Priorities

NCBA's policy focus for 2022 is to protect and promote the economic, environmental, and social sustainability for the U.S. cattle industry.

KEEP US WORKING
FOR YOU!

JOIN TODAY!

www.NCBA.org

JOIN NCBA TODAY.

Fill out and mail back this form,
call us at 866.233.3872 OR join online at
NCBA.org.

NAME _____

BUSINESS/RANCH NAME _____

ADDRESS LINE 1 _____

ADDRESS LINE 2 _____

CITY/STATE/ZIP _____

HOME PHONE _____

OFFICE PHONE _____

EMAIL _____

RECRUITED BY _____

NCBA PRODUCER MEMBERSHIP

COW-CALF PRODUCER

HERD SIZE

- 1-100 \$150
- 101-250 \$300
- 251-500 \$450
- 501-750 \$650
- 751-1000 \$900
- 1001-1250 \$1,150
- 1251-1500 \$1,400
- 1501-1750 \$1,650
- 1751-2000 \$1,900
- 2000+

(#hd ___ x38¢) + \$1,900 =

STOCKER/FEEDER

(#hd ___ x38¢) + \$150 =

ASSOCIATE MEMBERSHIP

NON-CATTLE OWNING,
NON-VOTING

- Individual \$150
- Business \$200
- Student \$50
(24 or younger)



Scan QR code to
learn more.

TOTAL AMOUNT PAID

Sign me up for
auto-renewal

PAYMENT METHOD

Check Visa Mastercard American Express

Card # _____

EXP _____

CVC _____

Signature _____

Checks payable to National Cattlemen's Beef Association

BLOAT - A True Emergency!

By: Dr. Melanie Hemenway, NYSCHAP

Bloat is a form of indigestion marked by excessive accumulation of gas in the rumen. Immediately after cattle consume a meal, the digestive process creates gases in the rumen. Most of the gases are eliminated by eructation (belching). Any interruption of this normal gas elimination results in gas accumulation or bloat. Bloat can be caused by:

- a condition secondary to acidosis indigestion,
- certain proteins in forage,
- the amount, rate of intake, and coarseness of the roughage,
- rate of digestion of grains as a result of processing (grinding too fine),
- host-parasite reaction following grub treatment choking,
- enlargement of the lymph nodes between the lungs, which can compress the esophagus or interfere with the function of the vagus nerves, or
- an inherited tendency for bloat.



There are two sorts of bloat. The least common type is gassy bloat, which occurs when the esophagus is obstructed (often by foreign objects) or when the animal can't burp (such as with milk fever or tetanus). The second type of bloat is frothy bloat, which happens as the result of a stable foam developing on top of the rumen liquid, which blocks the release of the gas. This is by far the most common form of bloat, and unlike gassy bloat, it is highly seasonal with peaks in the spring and autumn. This is because the foam is formed by breakdown products from rapidly growing forages (particularly legumes such as clover and alfalfa). These increase the viscosity (stickiness) of the rumen fluid and prevent the small bubbles of gas formed by rumen fermentation from coming together to form free gas that can be belched off.

Clinical Signs

- Distended left side of the animal is the most obvious sign
- Usually associated with pain, discomfort, and bellowing.
- Death can occur within 15 minutes after the development of bloat
- Gaseous bloat is usually seen in one or two animals. Frothy bloat can affect up to 25% of cases
- In some cases, sudden death may be the first sign seen by the stockman, although in such cases it is likely that there will be other cattle with bloat that are still alive.

Frothy bloat also known as pasture bloat is primarily a disease of cattle that graze pastures where legumes make up greater than 50% of the total forage.



Legumes with the highest likelihood to cause bloat include white clover, alfalfa, annual medics and Persian clover. Red clover, crimson clover and subterranean clover would be classified as moderately likely to cause bloat, while berseem clover and arrowleaf clover are low risks for causing bloat. Legumes that don't cause bloat are birdsfoot trefoil, sainfoin and crownvetch.


continued on page 12

BLOAT- A True Emergency, *cont.*


Because treatment for bloat can often be too late, prevention is the key. Here are nine tips for preventing bloat.

- Offer poloxalene to cattle for at least three days before they're turned out on pasture that has a potential to cause bloat. It's best to use poloxalene in a daily feed to ensure uniform intake, but availability is a problem. That's why molasses/salt-based blocks (Bloat-guard®) are the most commonly used form of the preventive product. When using these blocks, remove all other sources of salt and mineral to ensure that the poloxalene-containing blocks are consumed.
- Fill cattle with dry hay before turnout onto legume pasture.
- Turn cattle out after midday when pasture is dry (no dew or excess moisture).
- Turn cattle out and leave them. Don't pull them in and out daily. Otherwise, cattle will "learn" that they will be moved to the legume pasture and may wait to eat until moved. While the popular perception is that the ideal way to introduce cattle to high-legume pasture is to turn them out for an increasing amount of time each day, research doesn't support the practice.
- Continue using poloxalene while grazing legumes and locate the product near water for increased intake.





Producing Stylish
Predictable
Simmental Cattle
that perform in and
out of the show ring.



Simme Valley Fre-Anna
Supreme Winner at
Jersey Fresh – Allegany Fair – Erie County Fair
Tioga County Fair – NY All Breeds Supreme Show
NYSF Simmental Show, and Gr Champ at Big E
Jeanne White 607-423-4888 Jeanne@SimmeValley.com
Phil Paradis 607-280-4299 www.SimmeValley.com

- Inter-seed pure legume pastures with an appropriate grass to dilute the legume's bloat-causing effect. Add legumes that don't cause bloat or are less likely to cause bloat to pastures.
- Don't clip a grass-legume pasture and then immediately turn cattle out onto it. This is especially true with a pasture high in white clover; once the taller grass is removed, the short, highly palatable white clover, which has a high potential to cause bloat, can then be easily grazed by cattle.
- Observe cattle frequently the first few days on new legume pasture.
- Some cattle have increased susceptibility to pasture bloat; these animals are candidates for culling. Eliminate their genetics from the herd.

Pasture bloat is a mostly preventable disease of grazing cattle. If you follow these recommendations, the chance of having an animal bloat is greatly reduced, but there's still a possibility you could see a case.

As most seasoned cattle producers know, frothy bloat is a true emergency; having an "emergency kit" on hand could well pay dividends. Talk to your veterinarian to see if it would be wise to have a few supplies on hand and be sure to get proper training on their use to give you the best chance of dealing with bloat in pasture cattle.

SEPTEMBER/OCTOBER 2022

YOUR BEEF CHECKOFF

Investing in Beef Safety, Nutrition and Promotion.



Funded by Beef Farmers & Ranchers

NY Beef Checkoff Beefs Up National Conference

“The New York Beef Council educates National Agriculture in the Classroom 2022 Conference Attendees”

Saratoga Springs, NY (June 2022) – The New York Beef Council (NYBC) on behalf of the New York Beef Checkoff and funding from Iowa Beef Industry Council recently attended the National Agriculture in the Classroom Conference in support of their continued partnership with New York Agriculture in Classroom. The National Agriculture in the Classroom Organization works to increase the agricultural literacy of teachers and students by helping them communicate the source and value of agriculture in our lives.

On Day 1 of the conference the NYBC took 55 educators on a sponsored beef immersion experience hosted by the Perkin’s Family at Easton Station Farms in Greenwich, NY. Educators from several states attended and were treated to three round robin educational workshops during the farm tour.

Participants were introduced to the beef production lifecycle, the environmental sustainability efforts of beef farmers and ranchers, the biology of healthy soil, and beef labeling 101. A

highlight of the farm tour was the rainfall simulator demonstration which was facilitated by Fay Benson on behalf of the NY Soil Health Trailer which is funded by the NY Natural Resources Conservation Service (NRCS).



On Day 2 of the national conference, the NYBC facilitated a “Project-based learning through Beef Workshop” where teachers were led through a hands-on interactive demonstration featuring the NYBC’s Top Cuts a Beef Contest Program through a mock contest execution exercise. The workshop focused on strategies for full-school cross-curricular integration of food and agriculture and concluded with an interactive challenge.

The NYBC continues to extend and support its outreach efforts to teachers and educators through several opportunities annually. This educational event was made possible through the NYBC’s continued partnership with the Iowa Beef Industry Council. The New York Beef Council, funded by the Beef Checkoff, is responsible for education outreach and promotion efforts on behalf of beef and dairy farmers.

NY Beef Checkoff Collaborates with Undeniably Dairy

“The NY Beef Checkoff joined forces with Undeniably Dairy for June Dairy Month!”

Rome, NY (May 2022)— Throughout June the New York Beef Council (NYBC) will co-host a weekly commodity collaboration with the American Dairy Association North East (ADANE) on both of their social media platforms. Videos highlighting the beef and dairy recipe pairings were created with the help of NYBC’s very own “Man with a Pan” aka Ryan Gros and the New York State Dairy Ambassadors, Gabby Taylor, Katie Jasmin, and Annika Donlick. “Man with a Pan” and the Dairy Ambassadors served as a spokesperson and advocates for dairy farmers during this fun collaborative effort. Each collaborative video emphasizes the versatility of both beef and dairy and educates consumers on the nutritional benefits of beef and dairy products. Don’t miss watching these entertaining, informative videos, every Thursday in June on either New York Beef Councils Facebook or Instagram platforms.

Four recipes were utilized for this fun collaboration and can be found by visiting:



These videos were inspired by the popularity of the high protein diet trend. Both dairy and beef products are a source of high-quality protein. Check out the fun and useful videos on our YouTube Page: <https://bit.ly/3DppeAa>



Don’t miss out on the latest episode! Scan to the QR Code to listen today.

Stabilize Rumen pH, Improve Rumen Function

LactiproNXT® and LactiproFLX® Uses

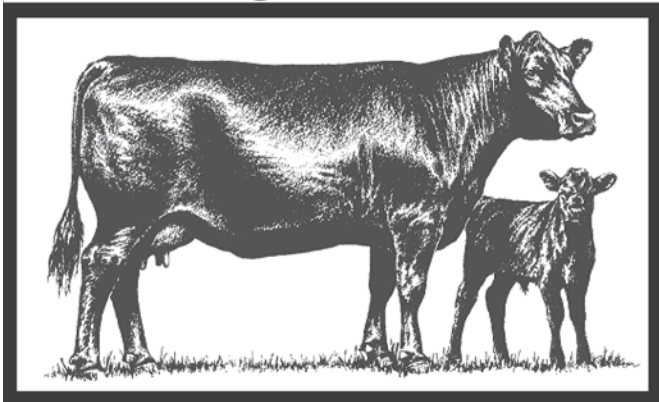
- ✓ Shorten the step up to finishing diet
- ✓ Terminal processing
- ✓ Hospital use
- ✓ Receiving cattle
- ✓ Cull cow feeding
- ✓ Crop residue grazing



877-907-5315 · msbiotec.com

HAUMAN ANGUS

Registered Black Angus Cattle for sale



- Mature "AI" bred yearling bulls
- Cow, calves, & heifers
- Over 40 years of performance "AI" breeding
- NYSCHAP Certified closed herd
- Johne's free test zero, Level 6 + (Highest Level)
- Leukosis Free
- BQA Level 2

***Proud Recipient of the 2019 Master Breeder Award
Presented by the New York Angus Association***

***Breeder of 2015
Midland Bull Test Award Winner
"HAF CHISUM A394"
#1 ADG - Group 1
#1 Top Indexing Angus Bull
#4 High Indexing Efficiency Ratio***

**Dewey & Mary Hauman
594 Lovejoy Road, Penn Yan, NY 14527
315-536-8154
dhauman@aol.com**

Forage Inventory Calculator Tool for Beef Producers

By: Amy Barkley

Livestock Specialist, Southwest New York Dairy, Livestock and Field Crops Program

As we move into fall, it's important to ensure that there are enough stored forages on the farm to get beef cattle through the winter. One of the more common stored forages is hay. Using an Excel inventory spreadsheet developed by Bill Halfman with the University of Wisconsin Extension, you can enter data from the farm to find the number of bales it will take to make it until the pastures green up again in the spring. The results you get here will also serve as an early indication as to whether or not additional hay needs to be purchased.

Here is the link where you can find the spreadsheet:

<https://fyi.extension.wisc.edu/forage/harvest/#econ>

To use this tool, you will need the following information:

Weights of 6 bales

- The total number of bales that you have to feed for the winter
- The storage loss (There is a reference table in the spreadsheet to assist with this estimation)
- The number of bulls, mature cows, yearling cattle, and calves you expect to feed over the winter
- The number of days you anticipate needing to feed animals throughout the winter
- The amount of hay that is fed to each animal unit (1 animal unit = 1,000 pounds of animal) per day

For assistance with using this hay inventory calculator or for more information on determining forage inventories, contact Livestock and Beginning Farm Specialist, Amy Barkley, at amb544@cornell.edu.

PRESENTED BY YOUR ARROWQUIP DEALER, WILLIAMS FENCE CNY

PORTABLE CHUTE, ALLEY, & TUB LIVE DEMONSTRATIONS

Live demonstrations by appt. only.
Contact Julie Wratten at 315-841-4910



October 24, 2020 | 9:30am-1pm

@ Hoskings Sales Barn 6096 State Route 8, New Berlin, NY 13411

Nov 7, 2020 | 10am-12pm

@ Sunnybrook Farm, 2115 Brothertown Road, Deansboro, NY 13328

30 LIVE HEREFORD LOTS SELL



**Northeast
Elite**
HEREFORD SALE

SELLING DAUGHTER of JKW 719T 1406 MISSY 1602 (above),
Sired by Boyd Power Surge



FEMALE PRODUCTION SALE

A FAMILY
AFFAIR

SEPT. 17, 2022
11AM

**TROWBRIDGE
FARMS**
GHENT, NY



PLUS
**Cheer-Up
Angus
Dispersal**
by John Iovieno

WWW.TROWBRIDGEFARMS.COM

518.369.6584 / PHIL & ANNIE TROWBRIDGE / phil@trowbridgefarms.com
518.755.7467 / PJ & MIRANDA TROWBRIDGE / pj@trowbridgefarms.com

BEEF EXPO WEEKEND



Sept. 24-25th, 2022

R Lott & Sons Farms, 2973 State Route 414 Seneca Falls, NY

Saturday, Sept. 24th

Educational speakers for both adults and juniors and full BQA training.

Lunch, trade show and other events all day!

NYBPA Council Meeting @ 6:30PM

Sunday, Sept. 25th

Jr Beef Expo Show! Check-in by 8:00AM. Show starts at 10:00AM.

Showmanship, Pee-Wee Class, Steers, then Heifers.

RSVP by Sept. 17th

nybeef@nybpa.org

ALL ARE WELCOME!

Time	BQA Training	Junior Program	Adult Program
9:00 - 9:30 AM	Trade Show Begins, Registration, & Light Breakfast Refreshments		
9:30 - 10:00 AM	<u>BQA Training</u> Classroom Training in Old Morton Building followed by Chute-Side Training (outside)	Junior Showmanship Clinic	DOT Ag Laws Presentation & Q & A - DOT Officer, NYS Police Commercial Vehicle Unit
10:00 - 11:00 AM			Crystalyx Tubs & Blueprint Minerals - Dr. James Gasper, Hubbard Feeds
11:00 - Noon			“Building A Mineral Program on Top of Forage Analysis” - Ben Scott, adjunct Animal Nutrition professor, SUNY Alfred
Noon - 1:30 PM	Lunch & Special Presentation		
1:30 - 2:15 PM		Junior Judging Clinic	“Farm Tax Prep & Financial Records” - Jim Fravil, Just Serendipity Farm, Lodi, NY
2:15 - 3:00 PM			“Maximizing Your Forage Base” - Dr. Patrick Gunn, Purina
3:00 - 4:00 PM			“The Beef Checkoff - What it does for the beef producer” - Steve Olson, NYBC Board Member
4:00 - 5:00 PM			“Proper Animal Handling Considerations” - Dr. Keith Carlson, Attica Veterinary Associates

Thank you to our Beef Expo Sponsors!



Chris & Tammy Boyce

Main & Pinckney, Inc

Hubbard Feeds

Coryn Farm Supplies, Inc



NY Beef Expo is brought to you by our event sponsors and the sponsors of NYBPA!



MultiMin USA



NYSAMP



Williams Fence Supplies



Thunder View Farms



Finger Lakes Cattle Company



THIS IS A TESTIMONIAL:



We could go on and on about Wind and Rain[®] mineral. How it provides the essential minerals cattle need in a convenient, weather-resistant granular form. But these cows say it all. Rely on this proven solution available through the Purina[®] All Seasons[™] Cattle Nutrition Program.

We can tell you more than this ad ever could.

Or visit ProofPays.com



FEED GREATNESS[®]



FARM CREDIT EAST

HOW DOES YOUR **BUSINESS GROW?**



Loans and Leases

Tax Services

Payroll Services

Business Consulting

Record-keeping

Country Home Loans

FarmStart for New Businesses

**Real Estate and
Equipment Appraisals**

Crop Insurance

The answer is simple: available credit. Farm Credit East is committed to supporting the agriculture, commercial fishing and forest products businesses that New York's economy depends on. Our lending services will give you the capital you need to grow your business — and that's good for everyone. Contact our lending experts today at the branch closest to you. **Loans for real estate, machinery and equipment, livestock and operating expenses.**

FARMCREDITEAST.COM
800.562.2235



- YON FAMILY FARMS -

Maternal Roots

FALL FEMALE & BULL SALE

GROUNDING IN Fertility. Data. Form. Function.

2-DAY-EVENT

FRIDAY, OCTOBER 28th at 1:00 p.m.

Selling 200 Females proven donors, elite feature open heifers, fall pairs, bred cows, & bred heifers

SATURDAY, OCTOBER 29th at 11:00 a.m.

Selling 250 Bulls 150 two-year-old bulls & 100 yearling bulls



Kevin, Lydia, Sally, Drake & Corbin
(803) 685-5048
Ridge Spring, South Carolina



www.yonfamilyfarms.com

DVAuction



Quality Registered Angus Cattle

- TVF maintains a closed herd, utilizing embryo transfer and artificial insemination to maintain diversity within the herd
- All cattle are born and raised on the farm
- Focused on high performance females producing outstanding carcass quality for our beef business
- Award Winning Environmental Stewardship
- Pasture proven, show ring recognized
- Semen, embryos and seedstock available at all times

Call now for best selection on your new herd sire!



62 Old Brodhead Road, Grahamsville, NY 12740
914-799-1091
tvangus@thunderviewfarms.com • www.thunderviewfarms.com



Over
60 YRS

One
Family

One
Farm

One
Breed

Raising
quality cattle

Protecting
clean water



Special NYBPA Member Offer!

On April 7th at the Zoom council meeting, it was decided that some equipment that NYBPA has will be sold. NYBPA members will have first opportunity to place bids on these items before being publicly placed for sale. Everything is sold as is.

Please submit sealed bids by Saturday, Sept 24th, 2022 to:

Amanda Dackowsky
nybeef@nybpa.org
10040 Hooker Hill Road
Perrysburg, NY 14129
or in person at Beef Expo

***Items can be viewed in person at Beef Expo, Sat. Sept 24th**

*** Everything is SOLD AS IS**

For more pictures or details on the equipment, please contact Amanda Dackowsky at 716-432-9871 or nybeef@nybpa.org or Skip Lear at 585-730-9383.



Item #1- For-Most feeder cattle chute, on trailer WITH scale. Too small for full grown cattle.



Item #2 - Cooking trailer with hitch; used for BBQ beef sandwiches at EFD



Item # 3, 4, & 5 - Hobart commercial meat slicers; 3 slicers, 110 volt, sold individually



2022 BEEF EXPO SPEAKERS

Don't miss the NY Beef Expo Weekend!

Educational speakers for adults and juniors, trade show, junior beef show, lunch, BQA training, and more. See flyer on page 17 for speaker schedule. Jr show info and entry form can be found on the website - www.nybpa.org. Please RSVP by Sept 17th to nybeef@nybpa.org. Hope to see you there! Check out the 2022 Beef Expo Speakers.

Dr. Gaspers received his B.S. degree in animal science with an emphasis in beef production from the University of Minnesota. He received his M.S. and Ph.D. degrees from North Dakota State University with an emphasis in ruminant nutrition and immunology. James now works with the Beef Technical Services Team at Hubbard Feeds covering Minnesota and Wisconsin. James focuses on cattle nutrition for both commercial and registered beef producers covering all aspects of the beef industry from cow/calf production to growing/finishing feedlots. His interests include providing complete nutritional and health management strategies to help producers reach their desired production goals. James was raised in south-east Minnesota on a cow/calf operation and has been involved with the cattle industry all his life.



Ben Scott is an animal nutritionist with Advanced Dairy Services, having worked full-time consulting in dairy, beef and other species' production systems since 2007. He is an adjunct instructor of Agricultural and Environmental Sciences for Alfred State College since 2017.

A 2002 graduate of Fillmore Central School, his educational background in environmental biology culminated in a 2016 Master's Degree in Animal Science from Cornell University. His particular interest is continuing to tie animal health, economics, agronomics, and nutrition into best practices for animal agriculture's hobbies and livelihoods.

Ben lives in Wayland, NY with his wife and 2 sons, and enjoys helping his grandparents with the family beef cattle operation in Richburg, NY.

Dr. Patrick Gunn grew up on a diversified farming operation in Greenfield, Indiana consisting of row crops, purebred cattle, custom finish swine, and a flock of Suffolk frame sheep. Gunn's education includes Purdue University, B.S. Animal Science, 2006. M.S. Ruminant Nutrition with Specialization in Feedlot, 2008. Ph.D. Reproductive Physiology and Ruminant Nutrition, 2013. After his collegiate training, Gunn joined the Animal Science faculty at Iowa State University where he served as the state extension cow-calf specialist, conducted applied research on cow-calf nutrition and reproductive technologies, and taught the senior-level Cow-calf Systems Management capstone course. In 2017, Gunn had the good fortune of joining Purina as a Beef Cattle Consultant and moving his wife, Kara, and two sons, Maddox and Wyatt, back to Greenfield to be near the family farming operation. Gunn's expertise and interests include nutritional impacts on reproductive efficiency in the cow herd, assisted reproductive technologies, improving cost of gain in the feedlot, and assisting producers in optimizing management schemes to meet documented goals.

Steve Olson of Lyons, NY is a retired Livestock and Meat Marketing Specialist. Steve obtained an AAS Degree in Animal Husbandry from the SUNY Alfred and a B.S. Degree in Animal Science and Industry, from Kansas State University. He began his career with USDA in 1977 as an Agricultural Commodity Grader (Meat) in Iowa and later in New York City. He served as a Livestock and Meat Marketing Specialist at the AMS headquarters in Washington, DC for 30 years. Throughout his career he has been involved with the development of meat purchase specifications and meat cut standards used by many organizations nationally and internationally. He has spoken around the world and received many accolades and awards. Steve retired from USDA in January 2010 and now resides in his hometown. He was awarded the Special Recognition Award from the American Meat Science Association recognizing his service to the meat industry. With his wife, Sue, they own Hidden Canyon Farm raising Angus, Hereford and Red Angus beef cattle and grain crops. For their efforts, they received the Wayne County, NY 2014 Conservation Farm of the Year award, the 2018 Beef Promoter of the Year Award, and recently 2022 Educator of the Year Award from the NY State Beef Producers Association. Steve has made himself available to judge various carcass and beef shows in Western New York. Steve brings a unique style when he works. Currently Steve serves on the Wayne County Soil and Water Board of Directors, and as Vice Chairman of the NY Beef Council Board of Directors.



After completing his undergraduate work at The Ohio State University, Dr. Keith completed his DVM degree at The Ohio State University in 2000. In addition to his regular veterinary practice Dr. Keith gives leadership to the clinic's work with reproduction and embryo transfer. These reproductive services include embryo superovulation and embryo recovery, embryo transfer using either frozen or purchased embryos, long thaw and direct transfer, and IVF embryo transfers, both fresh and frozen. Dr. Carlson lives in Genesee County with his wife and three sons.

ALL ARE WELCOME

Beef Expo is brought to you by our event sponsors and the sponsors of NYBPA.

2022 SUPREME COUNTY WINNERS



Allegheny County Fair
 Evie Groom
 GTC KCC Queen 355J
 03/20/2021
 Angus



Boonville/Oneida County Fair
 Spring Flight Farm
 SFF Ona of Oban
 06/09/2020
 Highland



Broome County Fair
 Caleb Holbert
 ESS Juliet J28
 04/19/2021
 Simmental



Cattaraugus County Fair
 Alysa Williams
 WRC Peyton
 02/11/2021
 Angus



Chautauqua County Fair
 Hannah Schauman
 Twilight
 01/01/2022
 Commercial



Chautauqua Beef Classic
 Lydia Covert
 AHTH Almost Famous
 103J
 02/12/2021
 SimSolution



Chemung County Fair
 Serenity Conklin
 Black Betty
 10/19/2021
 Angus



Clinton County Fair
 Eli Gauthier
 Mineral Spring Farm Gypsy
 10/01/2020
 Commercial



Cooperstown Junior Livestock Show
 Sophia Ostrander
 Victoria
 03/01/2021
 Hereford

2022 SUPREME COUNTY WINNERS



Cortland County Fair
Annika Donlick
Simme Valley Kristel
01/04/2022
Simmental



**Female Cash Showdown Jackpot
Cow/Calf Show**
Kaitlyn Broughton
Cow - Hill Haven Pretty Rose 2G ET
Calf – BRO Sweet Rose 302
01/01/2019 & 03/02/2022
Shorthorn



**Female Cash Showdown Jackpot
Heifer Show**
Jeffrey Wilson
Daisy
03/02/2021
Commercial



**Genesee County
Fair**
Colten Sugg
Circle K Pearl
01/02/2021
Charolais



Greene County Fair
Rowan Geurtz
FERN Sheena
10/08/2021
Angus



Madison County Fair
Arabeth Farm
Arabeth's Sally
03/26/2021
MaineTainer



Niagara County Fair
Nathan Reynolds
FDSC Flicka
05/08/2021
MaineTainer



**NY Cattle Battle Spring Jackpot
Show**
Lexi Vacinek
VDL Abby
03/28/2021
Commercial



NY Cattle Battle Spring Youth Show
Riley Mahaffey
MAHA Beautiful Aurora H21
11/25/2020
SimSolution Heifer

**Camera Shy
Hemlock/Livingston County Fair**
Karen Clark • Clarks Josephine
05/12/2021 • Simmental

2022 SUPREME COUNTY WINNERS



NYJBPA Preview Show

Dylan Bozeman
L/P Queen of Denial
03/12/2021
Simmental



Ontario County Fair

Dylan Bozeman
Miss CCF Shimmer
03/20/2021
SimSolution



Orleans County Fair

Samantha Basinait
Belmonts Breeze
10/01/2029
Simmental



Otsego County Fair

Gavin Fetterman
Cow - TMT Ultra Harley 100Y
Calf - TMT Ultra Eclipse Jephro
05/06/2020 & 04/01/2022
Hereford



Saratoga County Fair

Rylie Lear
Majin That Lady Jaye L12
09/06/2021
Angus

**Camera Shy
Schoharie County/
Cobleskill Fair**
Anna King
Cow – KRA Evelyn K04H
Calf – Kings Evelyn K101
04/04/2020 & 01/01/2022
Angus



Seneca County Fair

Taylor Pallokat
Cow - Cayuga View Blackbird
Lisa
Calf - Cayuga View Martin
01/01/2020 & 02/06/2022
Angus



Tioga County Fair

Simme Valley
Simme Valley Sexy Jenn
09/05/2021
Simmental



Yates County Fair

Karen Clark
Cow – H201 Trippys Bliss
Calf – Clarks Nickel
01/10/2020 & 02/04/2022
Simmental

2022 SUPREME SHOW PROGRAM

Supreme Show at NYS Fair Tuesday, August 30th @ 3PM on "Beef Day"

Thank you to the Supreme Show
Division Sponsors

*Kristen Stewart, Bath, NY
Ohisa Ridge Farm, Jordanville, NY*



Supreme Show
Reception
Dinner sponsored
by NY Angus
Association &
Dennis Montross

Thank you to HUBNER SEED and
AMERICAN CROP
INSURANCE for sponsoring the duffel
bags and vests for the Supreme Beef
Female Program! Thank you to PURINA
for sponsoring the Supreme Beef Female
Show at the NYS Fair!!



Your *Natural* Source for Feed Additives



SPECIAL BENEFITS FOR NATURALLY GROWN BEEF

vistapre⁺

agolin[®]



JOHN M. CLARK, P.A.S. (315) 868-5646



President- Daisy Trowbridge
 Vice Pres.- Makayla McLenithan
 Secretary- Patrick Stark
 Treasurer- Samantha Basinait
 Reporter- Patrick Stark
 Jr. Advisor - Sara Fessner



UPCOMING EVENTS

ATTENTION JUNIORS

Be sure to submit your incentive points to Sara Fessner, nyjbpa@gmail.com by December 31st!

Points worksheet can be found on the website under the Junior section.

WATCH FOR DETAILS!

Date - TBA

The juniors will be having an educational clinic at SUNY Cobleskill in NOVEMBER. Topics will be meat science and reproduction.

BEEF EXPO INFO

Junior Events at the 2022 Beef Expo

SEPT 24th - Showmanship & Judging Clinics (see flyer on page 17).

SEPT 25th - Jr Beef Expo Show
 Judge - Jon Harnish

Entry deadline - Sept 10th
 Go to www.nybpa.org for entry form and show details

Welcome NYJBPA New Members

- 1 - Georgia Dorman
- 1 - Grace Marie Hannon
- 1 - Harper Milhollen
- 1 - Michael Shisler
- 1 - Jenison Wright
- 4 - Taylor Corey
- 10 - Olivia & Sophia Ostrander
- 11 - James G Parke IV
- 12 - Rowan Geurtze
- 13 - Riley Mahaffey

JR CALENDAR

- Sept. 10th.....Entry DEADLINE for Jr Beef Expo Show
- Sept 24th.....Beef Expo, Showmanship & Judging
- Sept 25th.....Junior Beef Expo Show
- November.....Cobleskill Meat Lab & Repro Education Event
- December 31st.....Incentive Points DUE

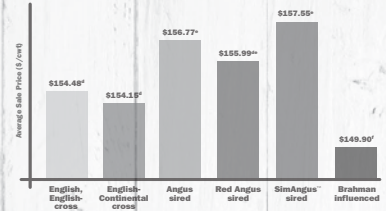




SimGenetics
PROFIT THROUGH SCIENCE
American Simmental Association

MORE PER HEAD PERIOD

EFFECT OF SIRE BREED ON SALE PRICE OF BEEF STEER CALVES
Superior Livestock Auction, Summer 2020^a



SimAngus[™]-sired steer calves sold through Superior Livestock Auction in summer 2020 earned **more at sale** time than all other calves^b

It's no wonder the percentage of SimAngus[™] calves marketed through the industry's largest video auction has grown **eightfold** since 2010.

Want low-risk, high-potential calves with earning potential?

STAND STRONG SIMMENTAL

406-587-4531 • simmental.org

^a For lots of 50 head or more. ^b Kansas State University, December 2020, Superior Livestock Auction data analysis of 3,280 lots, 394,900 head of beef calves marketed during summer 2020. (P<.0001)
^c Lots that qualified for breed-related programs were excluded from the model due to potential confounding effects with sire breed analysis and, for many, few lots in the data.
^{d,e,f} Means without a common superscript differ (P<.05). Lots of calves in breed-identified groups were sired by bulls from the respective breeds and out of dams with no Brahman influence.

New York Simmental Association

NYSA@NewYorkSimmental.com www.NewYorkSimmental.com

OFFICERS:

President: Darryl Bunal, Rome – 315-338-9033

Vice-Pres: Jeremy Bear, Greenville - 518-929-0677

Secretary: Jeanne White, Groton – 607-423-4888

Treasurer: Shawn Murphy, Eagle Bridge – 518-686-4180

Upcoming Calendar of Events:

July 30 - NYSA Picnic/Meeting, Tuckaway Farm, Bryan & Sarah Stocks,
Bring a dish to pass.





**What is conflict
costing you?**

NYSAMP.COM

866.669.7267

ALWAYS HIGH STANDARDS

- Confidential
- Voluntary
- Timely
- Professional Neutrality
- Low cost or free



A VIEW FROM THE TRACTOR SEAT

By Paul Trowbridge

The view this month is very clear it has been great weather for baling hay hot dry and low humidity. But and there always is a but in farming, the wheat crop is almost ready and that should target us for much-needed rain. Our second cutting is almost ready but also needs rain our black raspberries were small but just as many seeds as if they were large. So what was great for our hay crop is not so great for the rest of our farm but like Grandpa always said “ a dry year will scare you but a wet one will bury you” Thanks, Gramps. A lot of time spent with him growing up so blessed to have a gramps in my life before social media and accru weather he taught us well the water egg way of keeping fresh eggs for months without refrigeration. The old ways that I try to pass on so many things have changed over time but every time an elderly farmer passes he takes a dictionary of knowledge with him. Some day I hope to try and remember all his bits of the reason he passed down to our family one I will never forget I lost a baby calf I was waiting for very long from my first 4-H heifer I was in the dumps. Gramps told me something I will never forget he said IF YOU HAVE LIVESTOCK YOU ALSO HAVE DEAD STOCK a life lesson for sure he told our family many times if you are not an optimist better sell the farm and work in the city. He was always right the things we learned from him are not found in the library or in a book. He could get up in the morning wipe his hand on the lawn on the way to the barn and tell us no dew last night start baling early it will rain tonite by dark. The bees are doing good as long as I keep water for them they carry drops of water in to cool the brood if the brood overheats they die 97 degrees in a hive is about maximum if it's over that you can watch the bees taking water in to cool the hive. Mother nature is the finest ever seen the bees don't need a thermometer to know how hot it is ok till next month support your local farmer.

Thanx for Readen
Paul

P.S. keep your enemys close but your farmer closer

Daryl Hoover
315-545-2027

Skip Lear
315-226-2198

TWIN CLOVER



Equipment

Service...Our Priority



SCAN ME

NEW YORK'S SOURCE FOR BEEF CATTLE HANDLING EQUIPMENT



Calving
Pens



Basic
Chutes,
Squeeze
Chutes,
Headgates



Bale
Feeders



Check Out Our Gates & Corral Panels
At Finger Lakes Livestock Exchange



Priefert
Equipment
& Panels
In Stock



STOCKMAN'S CHOICE

built for your farm
MarWeld

MARTIN'S
Feeders & Equipment

Priefert®

New York Hereford Breeders Membership Application

Name _____ Farm Name _____
Address _____ City _____ State _____ Zip _____
County _____ Phone _____ E-Mail _____

**Membership: \$50.00 (2 Years)- Make checks payable to NYHBA and mail to:
Brenda Dermody, 2405 Limerick Road, Linwood, New York 14486**

Glade Haven Herefords
Tim Dennis
3550 Old County Road
Penn Yan, NY 14527
315-536-2769
tdennis@trilata.com

Mayer Cattle Farm
John Mayer
8004 Meacham Hill Road
Salamanca, NY 14779
716-984-9593
jmayer@mayerbrothers.com

Rambling M Farm
Bill & Chris Metch
3208 State Hwy. 206
Bainbridge, NY 13733
607-967-3020
wmetch@stny.rr.com

SK Herefords, LLC
Schubel, Keppler, Welker
11021 Ryan Road
Medina, NY 14103
585-798-4088
skherefordscattle@gmail.com

JKW Polled Herefords
John & Kathi Wagner
83 Howard Hall Road
Catskill, NY 12414
518-945-2638 or 518-469-3777
jkwpolledherefords@gmail.com

Updyke's Flagmarsh Ranch
Grady & Darlene Updyke
51 Updyke Road
Waverly, NY 14892
607-565-7357
flagmarshranch@stny.rr.com

Spring Pond Farm
John & Anita Kriese
4385 Italy Hill Road
Branchport, NY 14418
315-856-0234
hereford@frontiernet.net

Your Hereford Farm
Could be Here
Contact:
Brenda Dermody
585-233-0634
NYHB Treasurer



ANGUS CATTLE

AT EASE ACRES REGISTERED ANGUS



BREEDING & SHOW STOCK
WHOLESALE OF ALL NATURAL, PASTURE RAISED BEEF

Derrick & Nicole DeBoer
253 Line Rd, Berne NY 12023
607.280.8111/518.526.6623

www.AtEaseAcres.com
AtEaseAcres@gmail.com

BEEFMASTER CATTLE

LETENDRE FARMS

391 Allen Road
Richfield Springs, NY 13439
Phone: 315-717-1037
Email: letendrefarmny@yahoo.com

BEEFMASTER  **Beefmaster Cattle**
BREEDERS UNITED

REGISTERED - NATURALLY RAISED

HEREFORD CATTLE

Charlesworth Family Farm

Registered & Commercial
Black Angus Cattle



John R. Charlesworth
8984 New Albion Rd.
Little Valley, NY 14755
716-938-6676

JKW Polled Herefords



John and Kathi Wagner (518) 469-3777 - cell
83 Howard Hall Rd (518) 945-2638 - home
Catskill, NY 12414 jkwpolledherefords@gmail.com

www.jkwpolledherefords.com

Murphy Farm Registered Black Angus



Peter Murphy
1132 Rt. 80
Tully, NY. 13159

Home: 315-696-6092

Cell: 315-706-1693

ROOFING/SIDING

Metal Roofing & Siding

cut to your length within 24 hours
painted, galvalume, galvanized, aluminum
18 colors in stock, #1 & #2

- ✓ trim & accessories
- ✓ windows & doors
- ✓ sliding door track
- ✓ poly/glass board

E.B. Martin Roofing Supply

2845 Rte 364
Penn Yan NY 14527
315-536-0944

Yankee Beef



NORTH JAVA, NY

www.yankeebeef.com
716-479-0321 Erica

FREEZER BEEF
REGISTERED BLACK ANGUS
SOON: SHOW CALVES

RED ANGUS CATTLE

ERWINDALE FARMS

Red Angus

Ellen TenEyck

Jason TenEyck, Kendra Lotz, Karla & Jayce
1908 County House Road
Waterloo, NY 13165
315-246-1359/315-246-1394
erwindalefarms@yahoo.com

Visitors Welcome **Only 6 miles South of I-90 exit 41**



5887 ST. RT. 23, CINCINNATUS, NY 13040

REGISTERED RED ANGUS SEEDSTOCK - BULLS - HAY - STRAW

JAKE CHRISTY 607-342-0880
JOSH CHRISTY 607-345-1178
DAVE CHRISTY 607-423-2366

sales@uniformpro.com
www.brackelridgecattleco.com

MONTROSS BEEF CATTLE

Reg. Red Angus & Herefords

Feeders/Freezer Trade



Dennis and Linda Montross & Family

9971 Dietzel Rd.
Weedsport, NY 13166

Chris: 315-406-2042
Dennis: 315-730-5034
lamontross2002@yahoo.com

*Wayward
Wind Ranch*

Richard & Michelle Phillips

3974 Franklin St. Rd.
Auburn, NY 13021
315-255-1808

www.waywardwindranch.com
waywardwindranch@hotmail.com



Registered Red Angus
Bulls, Cows & Heifers
for sale

Hillview Farm

Registered Cows & Heifers For Sale

Allan Maxian | 7415 Route 80 | Fabius, NY 13063 | (315) 882-1718
allanmaxian.la@gmail.com

Registered Red Angus

Jacob Lipton
(860)-803-2777

jake@pleasantviewfarmsinc.com
452 South Road • Somers, CT 06071



www.PleasantViewFarmsInc.com

SIMMENTAL CATTLE

Elm Side Farm

Registered Simmental Cattle Also Registered SimAngus Genetics




Show Calves and Breeding Stock for Sale
Cattle for the small Breeder, calm dispositions.
Visitors are always welcome
Call for directions

THE REYNOLDS FAMILY
Art, Barb, Roger and Darby

836 Little Dryden Rd, Walton, N.Y. 13856
Barn: 607-865-6888 Cell: 607-434-3058
elmsidefarm@frontiernet.net

SIMMENTAL CATTLE

Registered Simm-Angus x Wagyu



bred for:
durability & feed efficiency

Choose Wagyu for Improved

- marbling
- beef quality
- fat profile

802-376-6729 ~ Mary Beth


- Vaccinated
- High Tenderness
- SCD-AA Verified

F1-Fullblood Wagyu Available

*SCD-AA fat profile has been found to indicate low melting point (healthier) fats

James D. Frueh ~ (518) 436 1050

SGF BC Lookout 7024 313R
SCD-AA 9




**Registered Angus
1-3 year old Bulls
Bred & Open Heifers
Bred Cows
Cow Calf pairs
Feeder Calves
High Tenderness
SCD-AA Verified
Vaccinated**

Stoffels Glenview Farm


SHOW SUPPLIES

HIGHLAND



LIVESTOCK SUPPLY, LTD

**The Best In Livestock Supplies & Equipment
From Brands You Know & Trust**



- Allflex Identification
- Andis Clippers
- Apache Creep Feeders
- Easy Way Fly Stations
- Ritchie Fountains
- Smidley Steer Stuffers
- Speedrite Fence Energizers
- Stronghold Equipment
- Sullivan Supplies
- Titan West Equipment
- Tru-Test Scales

330-457-2033

PO Box 190 - New Waterford, OH 44445

WWW.HIGHLANDLIVESTOCKSUPPLY.COM



Rugenstein FAMILY FARM

**Randy & Karen Rugenstein
Becky & Tom Snyder
Amy & Mike Pyra**

585-398-2273
585-746-5039
RFFarm@hotmail.com

1848 Risser Rd
Canandaigua, NY

Raising Simmental Cattle With Proven Genetics

LIMOUSIN CATTLE

"The Legacy Continues"




**LENAPE
LIMOUSIN**

**RAY & BARB MOYER
REGISTERED FULLBLOOD
LIMOUSIN**

Phone: 267-718-0574
lenapelimousin@gmail.com
41 Fretz Rd., Telford, PA 18969
www.lenapelimousin.com

THORPE

USDA ALL-NATURAL
BEEF
PORK
Retail / Wholesale



NYS
AWARD-WINNING
QUALITY HAY
Retail / Wholesale

Farms
SIM-ANGUS CATTLE
2021 ROUTE 11
LAFAYETTE, NY 13084

Shelley Thorpe 315-677-3342 Tim Thorpe
www.ThorpeFarms.com

Support "Your" Association
Your Farm or Business could be listed here.
It's only \$120.00 A YEAR!!!
Send Business card to nybeef@nybpa.org



Classifieds



For Sale: Black registered Beefmaster bull 13 months old. AI sired, easy calving, \$1350. Also a couple registered, young bred Black Beefmaster cows. Letendre Beefmasters, call or Text 1-315-717-1037

For Sale: 3.5 YO senior Angus herd bull. Elite genetic profile in a powerfully built package. Huwa 733 Powerplay 9050 R#19437186 calving ease, growth + carcass merit. Bred 2 successful seasons for us, he needs new ladies. \$6,000 OBO, calf crop available for viewing during farm visit. 7164790321 call or text. Available early/mid September 2022. Video/photos available at www.Yankeebeef.com

Good Red Angus Bulls For Sale: Sharp, very well mannered, vaccinated, tested, and calving ease bulls. Contact Wayward Wind Ranch 315-567-6432 or 315-255-1808

For Sale: Reg. performance-bred Black Angus yearling bulls. "AI" sired by Stunner, Homegrown and Tombstone 050. Their dams and maternal granddams are also "AI" sired. Breeders of Reg. Black Angus for over 40 years, our closed herd is NYSCHAP certified, John's free at the highest rating of 6+. Call for information. Hauman Angus (315) 536-8154

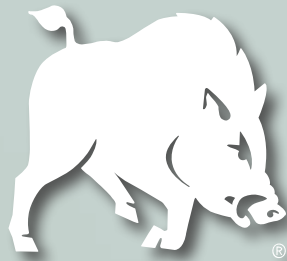
Herd For Sale: Commercial Angus/Hereford herd: 12 cows (5-9 year olds, 6-2 year olds, 1- 4 year old) and 1- 5.5 year old Akaushi Bull (Red Wagyu). Bull is 100% DNA certified and Registered with American Akaushi Association. Cows not pregnant checked but should be bred for late summer calves. Asking \$14,000. Luke Beadnell 518-260-4048 Beadnell21@yahoo.com

FOR SALE: NYBPA is selling some equipment that is no longer used. We want to offer these items to members first. Check out pictures, descriptions, and bidding details on page 22.

**Classified Ads are FREE to any NYBPA Members.
Send information to nybeef@nybpa.org
Classified Ads also appear on the website at www.nybpa.org**

COCHECTON MILLS
INC.
"Supreme Quality Feeds"
Custom Feeds • Fertilizers • Farm Supplies
Bulk and Bagged Feed Deliveries
30 Depot Rd., Cochection, NY 12726
(845)932-8282
www.cochectonmills.com

J.F. ZUILL
Agricultural Enterprises
Livestock Transport- BQA Certified- Local & Long Distance
Clean Safe Equipment- Experienced- Fully Insured
Hay Straw- Mulch- Equipment Sales- Flatbed Service
Cell- 607-316-0258 Phone-607-895-6478
Bainbridge, New York



**IF IT DOESN'T SAY
BUSH HOG®
IT JUST WON'T CUT IT™**

TRANSFORM YOUR PROPERTY INTO A LAND OF OPPORTUNITY

**OUR FLEX-WING ROTARY CUTTERS ARE PERFECT FOR
MAINTAINING A ROLLING PASTURE OR ORCHARD, OR CLEARING HEAVY CROPS.**



**CHECK OUT OUR FULL PRODUCT
LINE AT BUSHHOG.COM**



**ASK ABOUT ADDITIONAL
DISCOUNTS AVAILABLE
TO MEMBERS OF NEW YORK
BEEF PRODUCERS
ASSOCIATION.**

**ROTARY CUTTERS FROM 4'-20'
HAY TOOLS
LANDSCAPE, TILLAGE, LAND MAINTENANCE
& MATERIAL HANDLING EQUIPMENT
AND SO MUCH MORE!**

CONTACT US FOR MORE INFORMATION :

 2501 GRIFFIN AVE. SELMA, ALABAMA 36703  800.363.6069  BUSHHOG.COM



We are humankind
for cattlekind.



It's our duty to help
protect this sacred bond.
This is what defines us.
BornOfTheBond.com

All trademarks are the property of Zoetis Services LLC or a related company or a licensor
unless otherwise noted. © 2021 Zoetis Services LLC. All rights reserved. GBF-00463

zoetis